

MAR 03 1998

RECORDED

SECTION

LAND CORNER RECORDATION CERTIFICATE

Filing Requirement of Act 74, Mich. P.A. 1970

1997 DEC 10 PM 3:54

For corners in

Dickinson (County)

Located In:

Corner Code #

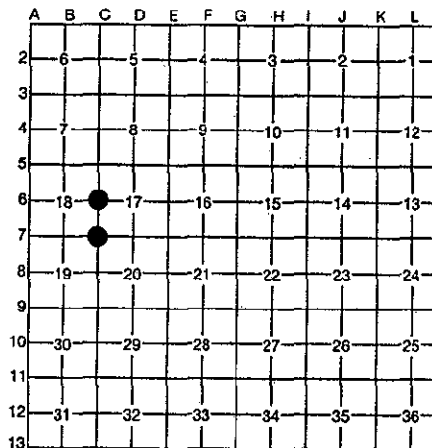
Breitung Twp.

1. Public Land Survey	T 40N R 30W	C-6
	T R	C-7
	T R	
	T R	
2. Property Controlling in Section	S T R	
	S T R	
3. Miscellaneous Property in Section	S T R	
	S T R	

REGISTER OF DEEDS  
DICKINSON COUNTY  
RON HARRIS, CLERK

Register of Deeds Stamp & File Number

4. Lot No. \_\_\_\_\_, Recorded Plat \_\_\_\_\_  
5. Private Claims \_\_\_\_\_



I, Robert F. Perkins, in a field survey on Oct. 9, 1997, do hereby certify that under requirements of P.A. 74, Michigan P.A. of 1970, the corner points mentioned in lines 1 and 2 above were in conformance with regulations and rules therefore as required in the current manual of survey instructions of the United States Department of the Interior, Bureau of Land Management or by a decree of a Court of Law and/or that the corner points mentioned in lines 3, 4 and 5 above were in conformance with the rules of the Michigan Board of Professional Surveyors or by a Decree of a Court of Law; established, re-established, monumented, re-monumented, recovered, found as expressed below:

NOTE: Not more than 4 corners, all in the same town and range, may be recorded on this certificate.

A. Description of original monument and accessories and/or subsequent restoration:

C-6 1/2 Corner Common to Sections 17 & 18  
Post by James H. Mullett, D.S. 1849  
Original Bearing Trees  
Aspen 4" S70°W 15 Lks.  
Aspen 4" S72°E 08 Lks.

C-7 Corner Common to Sections 17-18-19-20  
Post by James H. Mullett, D.S. 1849  
Original Bearing Trees  
Aspen 6" S55°W 81 Lks.  
"No other Near"

V24°E ACCEPTED BY THE DICKINSON COUNTY SURVEY PEER GROUP AS THE OFFICIAL CORNER UNDER MICHIGAN PUBLIC ACT 345 OF 1990 AT A MEETING HELD ON 12-9-97

COPY REPRESENTATIVE

B. Description of corner evidence found and/or method applied in restoring or reestablishing corner

C-6 No Evidence of Original Corner or Accessories Found.  
Found 1" Iron Pipe with I.D. Cap RLS 12027 Set in 1972. Corner indicated on Dickinson Co. Road Commission Plans and used and accepted on numerous Surveys including Unrecorded Subdivisions adjacent to it. Existing Witness Trees and Square Cedar Post at Pipe.

C-7 No Evidence of Original Corner or Accessories Found.  
Up to about 8 years ago this Corner had been marked by an Iron Pipe with W.Pine B.T. and a Fence running South and West. At about that time Bacco Construction Co. built a new Steel Post Fence West and North, Setting a 4" Steel Casing in Concrete at the Corner. Found old Pipe Corner with Flanged Bottom in Top of Casing. Also found Existing Witness Trees.

C. Description of monument for corner and accessories established to perpetuate locating the position of the corner:

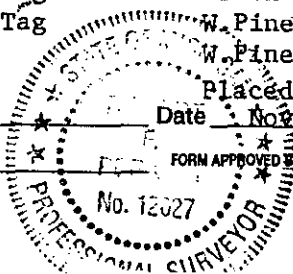
C-6 Accepted above Described Pipe as best Available Evidence of Corner Location. Replaced existing Pipe with 3 1/2" Stamped D.C. Remon. Corner.  
New Witnesses:  
Cedar 6" S13°E (M.B.) 23.42' Nail/Tag  
Cedar 8" S76°E (M.B.) 11.28' Nail/Tag  
Cedar 8" N12°W (M.B.) 27.60' Nail/Tag  
Cedar 10" S56°W (M.B.) 26.36' Nail/Tag  
Carsonite Marker North 0.6'

C-7 Accepted above Described Location as Best Available Evidence of Corner. Set 3 1/2" Stamped D.C. Remon. Witness Corner 5.0' East of Fence Corner.  
New Witnesses:  
Dbl. Maple 6" S14°E (M.B.) 18.0'  
Cherry 12" S70°W (M.B.) 28.10' Nail/Tag  
Maple 9" N9°W (M.B.) 11.35' Nail/Tag  
Birch 8" N50°E (M.B.) 44.33' Nail/Tag  
W. Pine 30" N80°E (M.B.) 42.5' Ex. BT-Dead  
W. Pine 30" N47°E (M.B.) 36.7' Ex. BT  
Placed Carsonite Stake at W.C.

Signed by Robert F. Perkins

Date Nov. 26, 1997

Surveyor's Michigan License No. 12027



FORM APPROVED BY MICHIGAN STATE BOARD OF PROFESSIONAL SURVEYORS, JAN. 28, 1971  
REVISED MAY 14, 1975  
REVISED JAN., 1983