

SURVEY & REMONUMENTATION

MAR 03 1998

LAND CORNER RECORDATION CERTIFICATE

RECORDED

Filing Requirement of Act 74, Mich. P.A. 1979

DEC 10 PM 3:54

SECTION

For corners in Dickinson (County)

Located in:

Corner Code #

Breitung Twp.

1. Public Land Survey	T	40N	R	30W	C-8
	T		R		I-9
	T		R		
	T		R		
2. Property Controlling in Section	S		T	R	
	S		T	R	
3. Miscellaneous Property in Section	S		T	R	
	S		T	R	

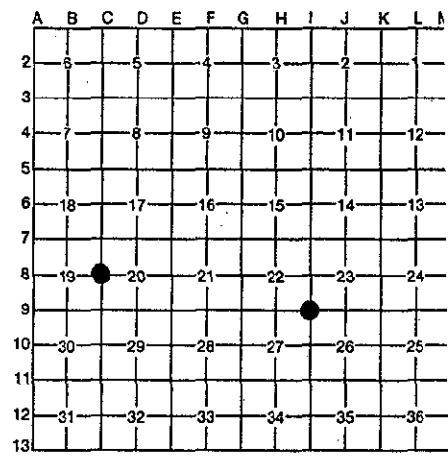
REGISTER OF DEEDS
DICKINSON COUNTY
RON HOUTLAUB, CLERK

Register of Deeds Stamp & File Number

4. Lot No. _____, Recorded Plat _____

5. Private Claims _____

I, Robert F. Perkins, in a field survey on Oct. 3, 1997, do hereby certify that under requirements of P.A. 74, Michigan P.A. of 1970, the corner points mentioned in lines 1 and 2 above were in conformance with regulations and rules therefore as required in the current manual of survey instructions of the United States Department of the Interior, Bureau of Land Management or by a decree of a Court of Law and/or that the corner points mentioned in lines 3, 4 and 5 above were in conformance with the rules of the Michigan Board of Professional Surveyors or by a Decree of a Court of Law; established, re-established, monumented, re-monumented, recovered, found as expressed below:



NOTE: Not more than 4 corners, all in the same town and range, may be recorded on this certificate.

A. Description of original monument and accessories and/or subsequent restoration:

C-8	¼ Corner Common to Sections 19/20 Post by James H. Mullett, D.S. 1849 Original Bearing Trees Pine Stub 12" N41°E 35 Lks. Pine Stub 12" S85°E 84 Lks.	I-9	Corner Common to Sections 22-23-26-27 Post by James H. Mullett, D.S. 1849 Original Bearing Trees Maple 10" N48°E 22 Lks. Ironwood 8" N37°W 35 Lks. V26°W
-----	--	-----	---

ACCEPTED BY THE DICKINSON COUNTY SURVEY PEER GROUP AS THE OFFICIAL CORNER UNDER MICHIGAN PUBLIC ACT 345 OF 1990 AT A MEETING HELD ON 12-9-97

B. Description of corner evidence found and/or method applied in restoring or reestablishing corner:

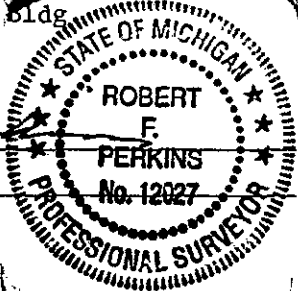
C-8	No Evidence of Original Corner or Accessories Found. Found ½" x 1" Iron Pin in Road. Removed Pin and Found 2" Iron Pipe 1.3' below Road Surface. Found 1" Iron Pipe Witness Corner 33.0' South as Set by N.T. Thompson, RLS. Corner shown on M.D.O.T. Plans of U.S-2 and Dickinson Co. Road Commission Plans. Corner used and accepted on numerous Prior Surveys.	I-9	Ran Transit Survey from Section Corner and ¼ Corner to West. Found 1½" Solid Iron Bar projecting 4" out of Ground 2608.47' East of ¼ Corner 22 and 5215.62' East of Section 27 Corner 21-22-27-28. Existing Iron Bar Resembles similar corners in Area probably Set by Mining Co. Prior to 1900.
-----	---	-----	--

COUNTY REPRESENTATIVE

C. Description of monument for corner and accessories established to perpetuate locating the position of the corner:

C-8	Accepted above Described Iron Pipe as Corner. Set 3½" Stamped D.C. Remon. Corner inside of Existing Iron Pipe and placed Monument Box over Corner. New Witnesses: J. Pine 12" N44°E (M.B.) 70.42' Nail/Tag P. Pole #65-2622 N83°W (M.B.) 80.55' Nail/Tag P. Pole #89-25477 S55°W (M.B.) 53.70' Nail/Tag N.W. Corner Concrete Block Bldg S39°E (M.B.) 63.95'	I-9	Accepted above Described Iron Bar as Corner. Set 3½" Stamped D.C. Remon. Corner at Existing Iron Bar. New Witnesses: Oak 5" N47°W (M.B.) 11.00' Nail/Tag Oak 7" S38°W (M.B.) 22.67' Nail/Tag Oak 8" S60°E (M.B.) 13.60' Nail/Tag R. Maple 8" (Clump) N47°E (M.B.) 23.85' Nail/Tag. Carsonite Marker North 1.0'
-----	--	-----	--

Signed by Robert F. Perkins
Surveyor's Michigan License No. 12027



Date Nov. 26, 1997

FORM APPROVED BY MICHIGAN STATE BOARD OF PROFESSIONAL SURVEYORS, JAN. 28, 1971
REVISED MAY 14, 1975
REVISED JAN., 1983