

MAY 07 1997

COMMISSION

LAND CORNER RECORDATION CERTIFICATE
Filing Requirement of Act 74, Mich. P.A. 1970

RECORDED

1996 DEC 18 AM 11:17

For corners in
DICKINSON
(County)
CITY OF IRON MOUNTAIN

Located In:

Corner Code #

- | | | | | | |
|--------------------------------------|---|------------|---|------------|-------------|
| 1. Public Land Survey | T | <u>40N</u> | R | <u>30W</u> | <u>C-11</u> |
| | T | --- | R | --- | <u>D-11</u> |
| | T | --- | R | --- | --- |
| | T | --- | R | --- | --- |
| 2. Property Controlling in Section | S | --- | T | --- | --- |
| | S | --- | T | --- | --- |
| 3. Miscellaneous Property in Section | S | --- | T | --- | --- |
| | S | --- | T | --- | --- |

REGISTER OF DEEDS
DICKINSON COUNTY
IRON MOUNTAIN, MICH. 49801

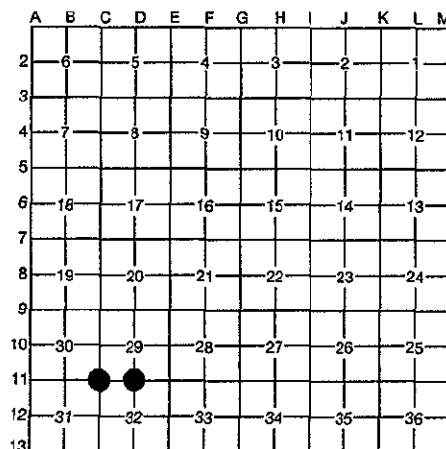
31

Register of Deeds Stamp & File Number

4. Lot No. _____, Recorded Plat _____
5. Private Claims _____

I, ROBERT F. PERKINS, in a field survey on 8-15, 19 96, do hereby certify that under requirements of P.A. 74, Michigan P.A. of 1970, the corner points mentioned in lines 1 and 2 above were in conformance with regulations and rules therefore as required in the current manual of survey instructions of the United States Department of the Interior, Bureau of Land Management or by a decree of a Court of Law and/or that the corner points mentioned in lines 3, 4 and 5 above were in conformance with the rules of the Michigan Board of Professional Surveyors or by a Decree of a Court of Law; established, re-established, monumented, re-monumented, recovered, found as expressed below:

NOTE: Not more than 4 corners, all in the same town and range, may be recorded on this certificate.



A. Description of original monument and accessories and/or subsequent restoration:

C-11 CORNER COMMON TO SECTIONS 29-30-31-32
POST BY J. H. MULLETT, D.S. 1849
ORIGINAL BEARING TREES
SUGAR 8" N25°W 33 L.
SUGAR 8" N38°E 36 L.

D-11 ¼ CORNER BETWEEN 32
POST BY J. H. MULLETT 1849
ORIGINAL BEARING TREES
BIRCH 10" N70°E 10 L.
BIRCH 10" S83°W 16 L.

B. Description of corner evidence found and/or method applied in restoring or reestablishing corner:

C-11 NO EVIDENCE OF ORIGINAL CORNER OR ACCESSORIES FOUND.
FOUND 1" IRON PIN IN 10" SQUARE STAMPED CONCRETE MONUMENT WITH NEWER BEARING TREES EVIDENT. CORNER USED AND ACCEPTED ON NUMEROUS SURVEYS. CORNER PROBABLY SET BY MINING COMPANY IN EARLY 1900'S.

D-11 NO EVIDENCE OF ORIGINAL CORNER OR ACCESSORIES FOUND.
FOUND 1" IRON PIN IN 10" SQUARE STAMPED CONCRETE MONUMENT WITH NEWER BEARING TREES EVIDENT. CORNER USED AND ACCEPTED ON NUMEROUS SURVEYS. CORNER PROBABLY SET BY MINING COMPANY IN EARLY 1900'S.

ACCEPTED BY THE DICKINSON COUNTY SURVEY PEER GROUP AS THE OFFICIAL CORNER UNDER MICHIGAN PUBLIC ACT 345 OF 1990 AT A MEETING HELD ON

12-17-96
RFP
COUNTY REPRESENTATIVE

C. Description of monument for corner and accessories established to perpetuate locating the position of the corner:

C-11 ACCEPTED ABOVE DESCRIBED MONUMENT AS CORNER.
NEW BEARING TREES:
HEMLOCK 14" N18°W (M.B.) 19.55' NAIL/TAG
HEMLOCK 12" S80°W (M.B.) 16.00' NAIL/TAG
HEMLOCK 8" S41°E (M.B.) 13.15' NAIL/TAG
HEMLOCK 16" N42°E (M.B.) 8.40' NAIL
CARSONITE MARKER PLACED 2.0' SOUTH.

D-11 ACCEPTED ABOVE DESCRIBED MONUMENT AS CORNER. CORNER FALLS IN OPEN SIDE HILL.
NEW WITNESSES:
½" x 36" RE-ROD W/TAG N41°W (M.B.) 50.00'
½" x 36" RE-ROD W/TAG N51°E (M.B.) 50.00'
NOTE: 74.39' BETWEEN ABOVE RE-RODS.
ASPEN 5" S48°E (M.B.) 46.85' NAIL/TAG
CARSONITE MARKER 1.7' NORTH
STEEL FENCE POST 1.0' SOUTH

Signed by Robert F. Perkins

Date NOVEMBER 6, 1996

Surveyor's Michigan License No. 12027

FORM APPROVED BY MICHIGAN STATE BOARD OF PROFESSIONAL SURVEYORS, JAN. 28, 1991
REVISED MAY 14, 1993

