

RECORDED

LAND CORNER RECORDATION CERTIFICATE

Filing Requirement of Act 74, Mich. P.A. 1970 1998 DEC 14 PM 12: 24

For corners in

<u>Dickinson</u> (County)	Located In:	Corner Code #
Breitung Twp.	T 40NR 30W	E-4
1. Public Land Survey	T R	E-5
	T R	
	T R	
2. Property Controlling in Section	S T R	
	S T R	
3. Miscellaneous Property in Sec.	S T R	
	S T R	

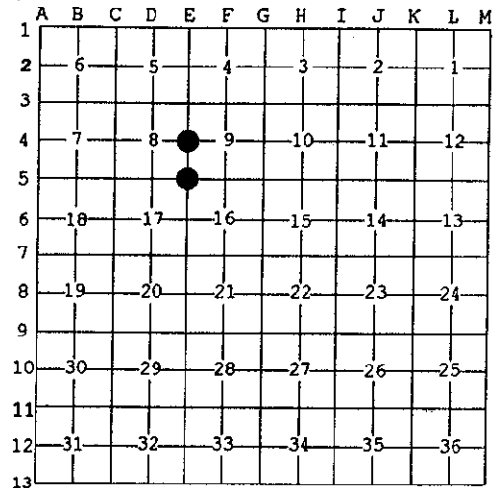
REGISTER OF DEEDS
DICKINSON COUNTY
RON MOORE, CLERK

Register of Deeds Stamp & File Number

4. Lot No. _____, Recorded Plat _____
5. Private Claims _____

SECTION

I, Robert F. Perkins, in a field survey on Aug. 18, 1998 do hereby state that under requirements of P.A. 74, Michigan P.A. of 1970, the corner points mentioned in lines 1 and 2 above were in conformance with regulations and rules therefore as required in the current manual of survey instructions of the United States Department of the Interior, Bureau of Land Management or by a decree of a Court of Law and for that the corner points mentioned in lines 3, 4 and 5 above were in conformance with the rules of the Michigan Board of Land Surveyors or by a Decree of a Court of Law; established, re-established, monumented, recovered, found as expressed below:



NOTE: Not more than 2 corners, all in the same town and range, may be recorded on this certificate.

A. Description of original monument and accessories and/or subsequent restoration:

E-4 1/4 Corner Common to Sections 8 & 9
Post by James H. Mullett, D.S. 1849
Original Bearing Trees
Aspen 5" N57°W 09 Lk.
Aspen 6" S13°E 16 Lk.

E-5 Corner Common to Sections 8-9-17-16
Post by James Mullett, D.S. 1849
Original Bearing Trees
Aspen 5" N57°W 09 Lk.
Aspen 6" S13°E 16 Lk.

B. Description of corner evidence found and/or method applied in restoring or reestablishing corner:

E-4 No Evidence of Original Corner or Accessories Found.
Found 1" Iron Pipe and Witnesses referred to in Certificate recorded in Liber 2, P. 22 signed by E. Kazianka, RLS dated 9-28-1991.

E-5 No Evidence of Original Corner or Accessories Found.
Found 1 1/4" Iron Pipe and Witnesses referred to in Certificate recorded in Liber 2, P. 22 signed by E. Kazianka, RLS dated 9-28-1991.

C. Description of monument for corner and accessories established to perpetuate locating the position of the corner:

E-4 Set 3 1/2" Stamped D.C. Remon. Corner inside of Existing Iron Pipe noted in B.
New Witnesses:
Maple 5" S80°E(M.B.) 96.22' Nail/Tag
W.Pine 8" N52°E(M.B.) 71.93' Nail/Tag
+ Cut in 5" Gate Post N70°E(M.B.) 5.57'
P.Pole #N68-2123 N81°E(M.B.) 25.87'
Placed carsonite Marker 1.0' North of Corner.

E-5 Set 3 1/2" Stamped D.C. Remon. Corner inside Iron Pipe noted in B above.
New Witnesses:
P.Pole #86-23305 N22°W(M.B.) 26.30' Nail/Tag
Fir 4" N70°E(M.B.) 19.50' Nail/Tag
Spruce 6" S45°E(M.B.) 5.66' Nail/Tag
Spruce 16" S76°W(M.B.) 47.25' Nail/Tag
Placed Carsonite marker 1' South of Corner.

Signed by

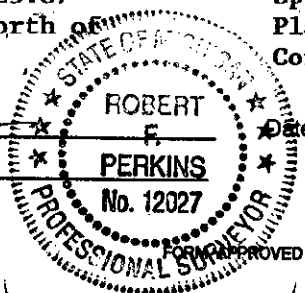
Robert F. Perkins

Date Oct. 24, 1998

Surveyor's Michigan License No. 12027

ACCEPTED BY THE DICKINSON COUNTY SURVEY PEER GROUP AS THE OFFICIAL CORNER UNDER MICHIGAN PUBLIC ACT 345 OF 1990 AT A MEETING HELD ON 12-7-98

R.F. Perkins
COUNTY REPRESENTATIVE



FORM APPROVED BY MICHIGAN STATE BOARD OF PROFESSIONAL SURVEYORS, JAN. 28, 1971
REVISED MAY 14, 1975
REVISED JAN., 1983
REVISED OCT., 1985