

MAY 07 1987

COMMISSION

LAND CORNER RECORDATION CERTIFICATE
Filing Requirement of Act 74, Mich. P.A. 1970

RECORDED

1996 DEC 18 AM 11:17

For corners in

DICKINSON

(County)

Located In:

Corner Code #

BREITUNG TWP.

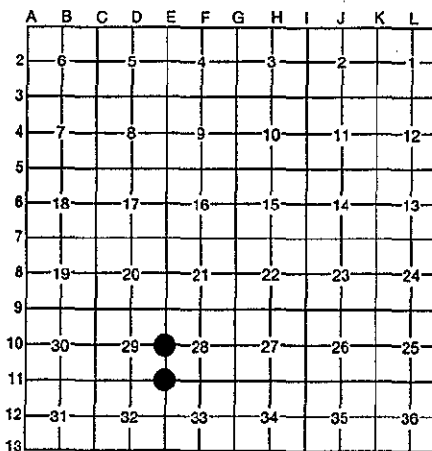
1. Public Land Survey	T 40N	R 30W	E-10
	T	R	E-11
	T	R	
	T	R	
2. Property Controlling in Section	S	T	R
	S	T	R
3. Miscellaneous Property in Section	S	T	R
	S	T	R

REGISTER OF DEEDS
DICKINSON COUNTY
IRON MOUNTAIN, MI. 49801

33

Register of Deeds Stamp & File Number

4. Lot No. _____, Recorded Plat _____
5. Private Claims _____



I, ROBERT F. PERKINS, in a field survey on 9-18, 19 96, do hereby certify that under requirements of P.A. 74, Michigan P.A. of 1970, the corner points mentioned in lines 1 and 2 above were in conformance with regulations and rules therefore as required in the current manual of survey instructions of the United States Department of the Interior, Bureau of Land Management or by a decree of a Court of Law and/or that the corner points mentioned in lines 3, 4 and 5 above were in conformance with the rules of the Michigan Board of Professional Surveyors or by a Decree of a Court of Law; established, re-established, monumented, re-monumented, recovered, found as expressed below:

NOTE: Not more than 4 corners, all in the same town and range, may be recorded on this certificate.

A. Description of original monument and accessories and/or subsequent restoration:

E-10 1/4 CORNER BETWEEN SECTIONS 29/28
J. H. MULLETT, D.S. 1849
ORIGINAL BEARING TREES
CEDAR 6" N12°W 11 L.
CEDAR 4" S30°E 06 L.

E-11 SECTION CORNER COMMON TO SECTIONS 28-29-32-33
J. H. MULLETT, D.S. 1849
ORIGINAL BEARING TREES
BIRCH 6" N22°E 23 L.
ASPEN 14" S37°W 26 L.

B. Description of corner evidence found and/or method applied in restoring or reestablishing corner:

E-10 NO EVIDENCE OF ORIGINAL CORNER OR ACCESSORIES FOUND.
FOUND IRON PIPE PROJECTING 16" OUT OF GROUND WITH NEWER BT'S.
FENCE LINE SOUTH. CORNER HAS BEEN IN PLACE OVER 30 YEARS AND HAS BEEN USED AND ACCEPTED ON NUMEROUS PRIOR SURVEYS.

E-11 NO EVIDENCE OF ORIGINAL CORNER OR ACCESSORIES FOUND.
FOUND IRON PIN IN 10" SQ. STAMPED CONCRETE MONUMENT AT FENCE CORNER NORTH AND EAST. NEWER BT'S.
MONUMENT IS OF TYPE SET BY MINING COMPANY IN EARLY 1900'S.

... THE BOARD OF SURVEY FOR OREGON AS THE OFFICIAL CORNER UNDER MICHIGAN PUBLIC ACT 345 OF 1990 AT A MEETING HELD ON 12-17-96
ROP
COUNTY REPRESENTATIVE

C. Description of monument for corner and accessories established to perpetuate locating the position of the corner:

E-10 ACCEPTED ABOVE DESCRIBED PIPE AS BEST AVAILABLE EVIDENCE OF CORNER LOCATION.
CUT OFF PIPE AND PLACED 3 1/2" D.C. REMON. STAMPED MONUMENT IN PIPE. PLACED CARSONITE MARKER 2.0' SOUTH.
NEW BEARING TREES:
MAPLE 6" N50°W (M.B.) 39.70' NAIL
W. BIRCH 8" N34°E (M.B.) 27.90' NAIL
W. PINE 8" N80°E (M.B.) 17.60' NAIL/TAG
ASPEN 6" S20°W (M.B.) 5.36' NAIL

E-11 ACCEPTED ABOVE DESCRIBED MONUMENT AS BEST AVAILABLE EVIDENCE OF CORNER LOCATION.
PLACED CARSONITE MARKER 1.7' NORTH.
NEW BEARING TREES:
MAPLE 3" N55°E (M.B.) 10.45' NAIL
W. BIRCH 8" S75°E (M.B.) 9.30' NAIL
MAPLE 6" S47°E (M.B.) 32.75' NAIL
OAK 6" S07°E (M.B.) 28.20' NAIL/TAG

Signed by Robert F. Perkins

Date NOVEMBER 6, 1996

Surveyor's Michigan License No. 12027

FORM APPROVED BY MICHIGAN STATE BOARD OF PROFESSIONAL SURVEYORS
REVISED JAN. 1983

