

MAY 07 1997

COMMISSION

LAND CORNER RECORDATION CERTIFICATE
Filing Requirement of Act 74, Mich. P.A. 1970

RECORDED

1996 DEC 18 AM 11:16

For corners in DICKINSON (County)

Located In:

Corner Code #

BREITUNG TWP.

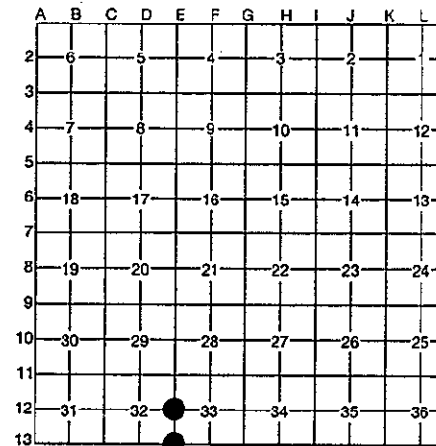
Table with 3 columns: Survey Type, Location (T, R, S, T, R), and Corner Code # (E-12, E-13). Includes entries for Public Land Survey, Property Controlling in Section, and Miscellaneous Property in Section.

REGISTER OF DEEDS
DICKINSON COUNTY
IRON MOUNTAIN, MICH. 49801

37

Register of Deeds Stamp & File Number

4. Lot No. , Recorded Plat
5. Private Claims



I, ROBERT F. PERKINS, in a field survey on 9-16, 1996, do hereby certify that under requirements of P.A. 74, Michigan P.A. of 1970, the corner points mentioned in lines 1 and 2 above were in conformance with regulations and rules therefore as required in the current manual of survey instructions of the United States Department of the Interior, Bureau of Land Management or by a decree of a Court of Law and/or that the corner points mentioned in lines 3, 4 and 5 above were in conformance with the rules of the Michigan Board of Professional Surveyors or by a Decree of a Court of Law; established, re-established, monumented, re-monumented, recovered, found as expressed below:

NOTE: Not more than 4 corners, all in the same town and range, may be recorded on this certificate.

A. Description of original monument and accessories and/or subsequent restoration:

E-12 1/4 CORNER BETWEEN SECTIONS 32/33
POST BY J. H. MULLETT, D.S. 1849
ORIGINAL BEARING TREES
ASPEN 8" S54°E 10 L.
B. OAK 8" N44°W 13 L.

E-13 SECTION CORNER COMMON TO SECTIONS 32-33-4-5
POST BY H. BREVORT JR., D.S. OCT. 1848
ORIGINAL BEARING TREES
W. PINE 10" N43°E 05 L.
Y. PINE 14" N47°W 09 L.

B. Description of corner evidence found and/or method applied in restoring or reestablishing corner:

E-12 NO EVIDENCE OF ORIGINAL CORNER OR ACCESSORIES FOUND.
FOUND 1" IRON PIN IN IN 10" SQUARE STAMPED CONCRETE MONUMENT.
TYPE SET BY MINING COMPANY IN EARLY 1900'S.

E-13 NO EVIDENCE OF ORIGINAL CORNER OR ACCESSORIES FOUND.
CORNER FALLS IN BUILT UP AREA MOBILE HOME PARK.
FOUND 1" IRON PIN IN 10" SQUARE CONCRETE MONUMENT. DAMAGED AND OUT OF POSITION.

RECEIVED BY THE BOARD OF PROFESSIONAL SURVEYORS AS THE OFFICIAL CORNER UNDER MICHIGAN PUBLIC ACT 345 OF 1990 AT A MEETING HELD ON 12-17-96
RFP
COUNTY REPRESENTATIVE

C. Description of monument for corner and accessories established to perpetuate locating the position of the corner:

E-12 ACCEPTED ABOVE DESCRIBED MONUMENT AS CORNER.
NEW BEARING TREES:
OAK 10" S85°W (M.B.) 24.19' NAIL/TAG
OAK 8" S45°W (M.B.) 21.19' NAIL/TAG
OAK 6" N90°E (M.B.) 14.90' NAIL/TAG
MAPLE 5" N11°E (M.B.) 25.15' NAIL/TAG
PLACED CARSONITE MARKER 1.3' NORTH OF MONUMENT.

E-13 SET D.C. REMON. 3 1/2" STAMPED CAP BY BY RUNNING SECTION LINE SOUTH FROM EXISTING SURVEY POINTS. CORNER FALLS ± 1' NORTH OF EXISTING CONCRETE MONUMENT.
NEW WITNESSES:
P. POLE N15°E (M.B.) 3.05' NAIL/TAG
CEDAR 6" N64°W (M.B.) 82.68' NAIL/TAG
N. PINE 8" N27°W (M.B.) 90.20' NAIL/TAG
PLACED CARSONITE MARKER 0.5' WEST

Signed by Robert F. Perkins

Date NOVEMBER 6, 1996

Surveyor's Michigan License No. 12027

FORM APPROVED BY MICHIGAN STATE BOARD OF PROFESSIONAL SURVEYORS, JAN. 28, 1991
REVISED MAY 14, 1995
REVISED 09-19-98

