

MAY 07 1997

COMMISSION

LAND CORNER RECORDATION CERTIFICATE  
Filing Requirement of Act 74, Mich. P.A. 1970

RECORDED  
1996 DEC 18 AM 11:16

For corners in DICKINSON (County) Located In: \_\_\_\_\_ Corner Code # \_\_\_\_\_  
BREITUNG TWP.

1. Public Land Survey	T	40N	R	30W	G-7
	T		R		G-8
	T		R		
	T		R		
2. Property Controlling in Section	S		T	R	
	S		T	R	
3. Miscellaneous Property in Section	S		T	R	
	S		T	R	

4. Lot No. \_\_\_\_\_, Recorded Plat \_\_\_\_\_  
5. Private Claims \_\_\_\_\_

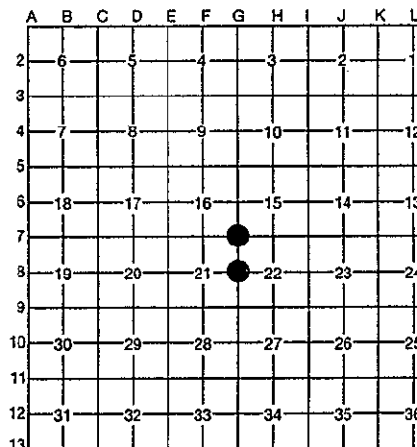
REGISTER OF DEEDS  
DICKINSON COUNTY  
IRON MOUNTAIN, MI 49801

39

Register of Deeds Stamp & File Number

I, ROBERT F. PERKINS, in a field survey on 8-13, 19 96, do hereby certify that under requirements of P.A. 74, Michigan P.A. of 1970, the corner points mentioned in lines 1 and 2 above were in conformance with regulations and rules therefore as required in the current manual of survey instructions of the United States Department of the Interior, Bureau of Land Management or by a decree of a Court of Law and/or that the corner points mentioned in lines 3, 4 and 5 above were in conformance with the rules of the Michigan Board of Professional Surveyors or by a Decree of a Court of Law; established, re-established, monumented, re-monumented, recovered, found as expressed below.

NOTE: Not more than 4 corners, all in the same town and range, may be recorded on this certificate.



A. Description of original monument and accessories and/or subsequent restoration:

G-7 CORNER COMMON TO SECTIONS 15-16-21-22  
POST BY J. H. MULLETT 1849  
ORIGINAL BEARING TREES  
BIRCH 8" S70°W 33 L.  
BIRCH 8" N53°E 29 L.

G-8 ¼ CORNER COMMON TO SECTIONS 21-22  
POST BY J. H. MULLETT 1849  
ORIGINAL BEARING TREES  
PINE STUMP 18" N18°W 49 L.  
W. OAK 4" S54°W 88 L.

B. Description of corner evidence found and/or method applied in restoring or reestablishing corner:

G-7 NO EVIDENCE OF ORIGINAL CORNER OR ACCESSORIES FOUND.  
FOUND ½" IRON PIN AT FENCE CORNER  
ANCIENT FENCES RUNNING N-S-E & W,  
EXISTING BEARING TREES.  
LOCATION CHECKS TO ¼ CORNERS  
NORTH AND SOUTH.

G-8 NO EVIDENCE OF ORIGINAL CORNER OR ACCESSORIES FOUND.  
FOUND IRON BAR EQUAL DISTANCE  
FROM SECTION CORNER ½ MILE NORTH  
AND ½ MILE SOUTH.  
NEWER BEARING TREES.  
USED ON ADJACENT SURVEY.

ACCEPTED BY THE DICKINSON COUNTY SURVEY PEER GROUP AS THE OFFICIAL CORNER UNDER MICHIGAN PUBLIC ACT 345 OF 1990 AT A MEETING HELD ON

12-17-96  
RFP  
COUNTY REPRESENTATIVE

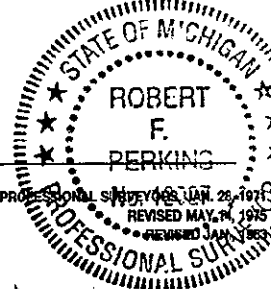
C. Description of monument for corner and accessories established to perpetuate locating the position of the corner:

G-7 ACCEPTED ABOVE DESCRIBED PIN AS BEST AVAILABLE EVIDENCE OF CORNER LOCATION.  
SET 2½" STAMPED D.C. REMON. CORNER AT PIN.  
NEW BEARING TREES:  
IRONWOOD 4" N56°W (M.B.) 71.69' NAIL/TAG  
MAPLE 5" N81°E (M.B.) 33.69' NAIL/TAG  
MAPLE 12" S35°E (M.B.) 16.12' NAIL  
MAPLE 6" S61°W (M.B.) 9.57' NAIL  
CARSONITE MARKER SET 2.0' EAST

G-8 ACCEPTED ABOVE DESCRIBED LOCATION AS BEST AVAILABLE EVIDENCE OF CORNER.  
SET 2½" STAMPED D.C. REMON. MONUMENT AT CORNER.  
NEW BEARING TREES:  
DBL. OAK 14" N82°E (M.B.) 47.60' NAIL/TAG  
MAPLE 12" S40°W (M.B.) 49.65' NAIL/TAG  
OAK 12" N42°W (M.B.) 47.90' NAIL  
MAPLE 5" S28°E (M.B.) 5.75' NAIL  
SET CARSONITE MARKER 2.0' EAST.

Signed by Robert F. Perkins  
Surveyor's Michigan License No. 12027

Date NOVEMBER 6, 1996



FORM APPROVED BY MICHIGAN STATE BOARD OF PROFESSIONAL SURVEYORS, REVISED JAN. 1988