

MAY 07 1997

COMMISSION

RECORDED

1996 DEC 18 AM 11:16

LAND CORNER RECORDATION CERTIFICATE
Filing Requirement of Act 74, Mich. P.A. 1970

For corners in

DICKINSON (County)

Located In:

Corner Code #

BREITUNG TWP.

- 1. Public Land Survey T 40N R 30W
2. Property Controlling in Section S T R
3. Miscellaneous Property in Section S T R

G-9
G-10

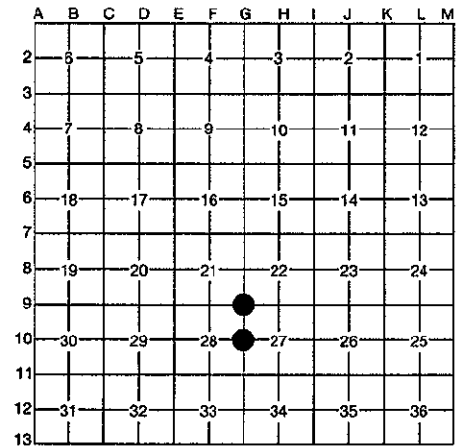
REGISTER OF DEEDS
DICKINSON COUNTY
IRON MOUNTAIN, MI 49801

46

Register of Deeds Stamp & File Number

- 4. Lot No. Recorded Plat
5. Private Claims

I, ROBERT F. PERKINS, in a field survey on 8-14, 19 96, do hereby certify that under requirements of P.A. 74, Michigan P.A. of 1970, the corner points mentioned in lines 1 and 2 above were in conformance with regulations and rules therefore as required in the current manual of survey instructions of the United States Department of the Interior, Bureau of Land Management or by a decree of a Court of Law and/or that the corner points mentioned in lines 3, 4 and 5 above were in conformance with the rules of the Michigan Board of Professional Surveyors or by a Decree of a Court of Law; established, re-established, monumented, re-monumented, recovered, found as expressed below:



NOTE: Not more than 4 corners, all in the same town and range, may be recorded on this certificate.

A. Description of original monument and accessories and/or subsequent restoration:

G-9 SECTION CORNER COMMON TO SECTIONS 21-22-27-28
POST BY J. H. MULLETT, D.S. 1849
ORIGINAL BEARING TREES
ASPEN 8" N51°E 1.25 L.
ASPEN 8" S70°E 1.02 L.

G-10 1/4 CORNER BETWEEN 28/27
POST BY J. H. MULLETT, D.S. 1849
ORIGINAL BEARING TREES
SUGAR 6" S32°E 53 L.
HEMLOCK 15" N40°E 44 L.

B. Description of corner evidence found and/or method applied in restoring or reestablishing corner:

G-9 NO EVIDENCE OF ORIGINAL CORNER OR ACCESSORIES FOUND.
FOUND 2 1/2" IRON PIPE WITH 1" BOLT INSIDE PIPE.
2 NEWER BEARING TREES.
CORNER HAS BEEN IN EXISTENCE MANY YEARS. HAS BEEN USED ON NUMEROUS SURVEYS INCLUDING RECORDED SUBDIVISION PLATS.

G-10 CORNER FALLS AT WEST EDGE COUNTY ROAD. NO EVIDENCE OF ORIGINAL CORNER OR ACCESSORIES FOUND.
FOUND 1 1/2" SOLID IRON BAR BURIED 8", 3.5' WEST OF WEST EDGE PAVT. ON ANCIENT E-W FENCE LINE. CORNER REFERRED TO IN D.C.R.COMM. NOTES 1930 AND USED AND ACCEPTED ON NUMEROUS SURVEYS.

ACCEPTED BY THE DICKINSON COUNTY SURVEY PEER GROUP AS THE OFFICIAL CORNER UNDER MICHIGAN PUBLIC ACT 345 OF 1990 AT A MEETING HELD ON 12-17-96

R.F.P.
COUNTY REPRESENTATIVE

C. Description of monument for corner and accessories established to perpetuate locating the position of the corner:

G-9 ACCEPTED ABOVE DESCRIBED PIPE AS BEST AVAILABLE EVIDENCE OF CORNER LOCATION. REPLACED SAME WITH 2 1/2" STAMPED D.C. REMON. MONUMENT.
NEW WITNESSES:
SPRUCE 7" N55°W (M.B.) 33.59' NAIL/TAG
MAPLE 8" S08°W (M.B.) 44.6' NAIL/TAG
P.POLE #71-2230 S57°W (M.B.) 34.42 NAIL/TAG
W. PINE 8" S82°E (M.B.) 85.26'
PLACED CARSONITE MARKER 2.0' SOUTH.

G-10 ACCEPTED ABOVE IRON BAR AS CORNER. SET 3 1/2" STAMPED WITNESS CORNER 30.00' EAST IN FENCE.
NEW WITNESSES TO IRON BAR:
+ CUT ON LARGE BOULDER N38°W (M.B.) 27.60'
P.POLE #20110 S23°W (M.B.) 22.92' NAIL/TAG
S.W. CORNER CONCRETE BLOCK GARAGE N29°E (M.B.) 85.50'.
PLACED CARSONITE MARKER AT W.C.

Signed by Robert F. Perkins

Date NOVEMBER 6, 1996

Surveyor's Michigan License No. 12027

FORM APPROVED BY MICHIGAN STATE BOARD OF PROFESSIONAL SURVEYORS, JAN. 28, 1986

