

MAY 07 1997

COMMISSION

LAND CORNER RECORDATION CERTIFICATE
Filing Requirement of Act 74, Mich. P.A. 1970

RECORDED
1996 DEC 10 AM 9:59

For corners in Dickinson Located In: _____ Corner Code # _____
(County)

1. Public Land Survey T 40N R 30W F-11 N $\frac{1}{4}$ ✓
T 40N R 30W G-12 E $\frac{1}{4}$ ✓
T _____ R _____
T _____ R _____

2. Property Controlling S _____ T _____ R _____
in Section S _____ T _____ R _____

3. Miscellaneous S _____ T _____ R _____
Property in Section S _____ T _____ R _____

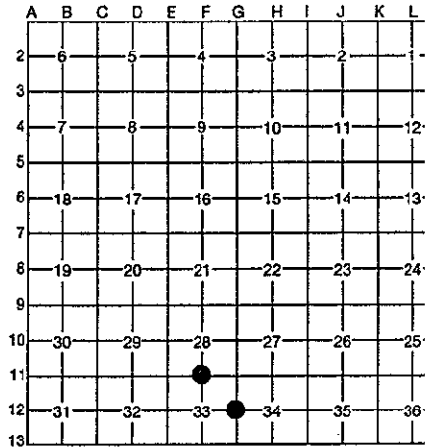
4. Lot No. _____, Recorded Plat _____

5. Private Claims _____

REGISTER OF DEEDS
DICKINSON COUNTY
RON MOUNTAIN 49801

Register of Deeds Stamp & File Number

I, John R. Garske, in a field survey on May, 1995, do hereby certify that under requirements of P.A. 74, Michigan P.A. of 1970, the corner points mentioned in lines 1 and 2 above were in conformance with regulations and rules therefore as required in the current manual of survey instructions of the United States Department of the Interior, Bureau of Land Management or by a decree of a Court of Law and/or that the corner points mentioned in lines 3, 4 and 5 above were in conformance with the rules of the Michigan Board of Professional Surveyors or by a Decree of a Court of Law; established, re-established, monumented, re-monumented, recovered, found as expressed below:



NOTE: Not more than 4 corners, all in the same town and range, may be recorded on this certificate.

A. Description of original monument and accessories and/or subsequent restoration:

- F-11 1849, James Mullet D. S.: West corrected, 40.10 $\frac{1}{2}$ Ch. Set Quarter Section Post.
Hemlock 10 S 53° W 15 lks. Birch 6 N 58° E 19 lks.
- G-12 1849, James Mullet D.S.: North, 40.00 Ch. Set Quarter Section Post on Summit.
Aspen 6 S 34° E 28 lks. Aspen 6 N 80° W 10 lks.

ACCEPTED BY THE DICKINSON COUNTY SURVEY PEER GROUP AS THE OFFICIAL CORNER UNDER MICHIGAN PUBLIC ACT 345 OF 1990 AT A MEETING HELD ON

10-9-96
ROIP

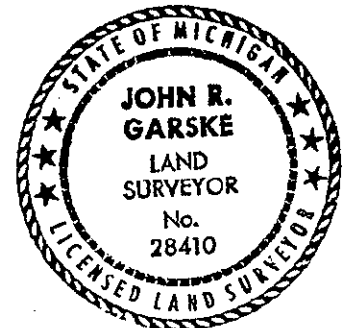
COUNTY REPRESENTATIVE

B. Description of corner evidence found and/or method applied in restoring or reestablishing corner:

- F-11 No original evidence found. Established Corner position by single proportionate measure between the Northeast and Northwest Corners of Section 33, Remnants of ancient North-South and East-West fences (wire only, no posts remain) are consistent with corner position.
- G-12 No original evidence found. Established Corner position by single proportionate measure between the Northeast and Southeast Corners of Section 33. Approximately 150 feet South of Break Point in hill and on a North-South blue line.

C. Description of monument for corner and accessories established to perpetuate locating the position of the corner:

- F-11 Set aluminum Dickinson County Monument. Referenced as follows:
Oak 5" N 28° E, 31.03' Oak 11" S 69° E, 39.03'
Maple 3" S 19° W, 25.09' Maple 5" S 88° W, 13.85'
Carsonite Witness Post, East, 1.36'
- G-12 Set aluminum Dickinson County Monument. Referenced as follows:
Oak 6" North, 24.81' Maple 5" N 70° E, 57.53'
Oak 10" S 65° E, 42.47' Maple 5" S 38° W, 24.23'
Carsonite Witness Post, N 60° W, 0.9'



Signed by John R. Garske Date 9-6-96

Surveyor's Michigan License No. 28410