

MAY 07 1997

COMMISSION

LAND CORNER RECORDATION CERTIFICATE  
Filing Requirement of Act 74, Mich. P.A. 1970

RECORDED

1996 DEC 18 AM 11:16

For corners in  
DICKINSON  
(County)  
BREITUNG TWP.

Located In:

Corner Code #

1. Public Land Survey	T	40N	R	30W	G-11
	T		R		H-9
	T		R		
	T		R		
2. Property Controlling in Section	S		T		
	S		T		
3. Miscellaneous Property in Section	S		T		
	S		T		

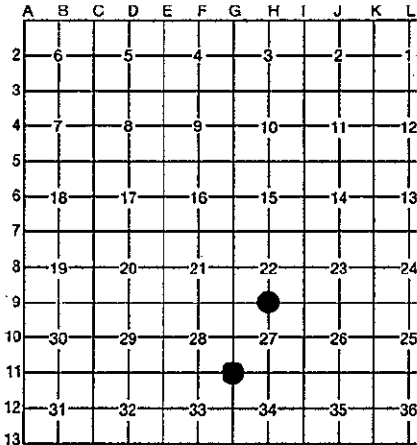
REGISTER OF DEEDS  
DICKINSON COUNTY  
IRON MOUNTAIN, MI 49801

41

Register of Deeds Stamp & File Number

4. Lot No. \_\_\_\_\_, Recorded Plat \_\_\_\_\_  
5. Private Claims \_\_\_\_\_

I, ROBERT F. PERKINS, in a field survey on 8-14, 1996, do hereby certify that under requirements of P.A. 74, Michigan P.A. of 1970, the corner points mentioned in lines 1 and 2 above were in conformance with regulations and rules therefore as required in the current manual of survey instructions of the United States Department of the Interior, Bureau of Land Management or by a decree of a Court of Law and/or that the corner points mentioned in lines 3, 4 and 5 above were in conformance with the rules of the Michigan Board of Professional Surveyors or by a Decree of a Court of Law; established, re-established, monumented, re-monumented, recovered, found as expressed below:



NOTE: Not more than 4 corners, all in the same town and range, may be recorded on this certificate.

A. Description of original monument and accessories and/or subsequent restoration:

<u>G-11</u> SECTION CORNER COMMON TO SECTIONS 27-28-33-34 POST BY J. H. MULLETT, D.S. 1849 ORIGINAL BEARING TREES CEDAR 12" N27°W 09 L. CEDAR 12" S60°E 79 L.	<u>H-9</u> 1/4 CORNER BETWEEN <u>22</u> / <u>27</u> POST BY J. H. MULLETT, D.S. 1849 ORIGINAL BEARING TREES SET POST B. OAK 10" N10°E 47 L. B. OAK 6" S30°W 30 L.
---	--

B. Description of corner evidence found and/or method applied in restoring or reestablishing corner:

<u>G-11</u> NO EVIDENCE OF ORIGINAL CORNER OR ACCESSORIES FOUND. FOUND 1 1/2" IRON PIPE AND OLD SCRIBED CEDAR POST (DOWN). 3 EXISTING NEWER BEARING TREES. OLD FENCE LINE NORTH FROM CORNER. CORNER HAS BEEN IN EXISTANCE OVER 30 YEARS AND ACCEPTED ON NUMEROUS SURVEYS.	<u>H-9</u> NO EVIDENCE OF ORIGINAL CORNER OR ACCESSORIES FOUND. FOUND 1" SOLID IRON BAR AND 4 NEWER BEARING TREES. CORNER IS 2607' EAST OF SECTION CORNER AND LOCATION AGREES WITH OLD E.I.M. & W. R.R. MAPS. IRON BAR FOUND IS TYPICAL OF CORNERS SET BY MINING COMPANYS IN THIS AREA.
---	--

ACCEPTED BY THE DICKINSON COUNTY SURVEY PEER GROUP AS THE OFFICIAL CORNER UNDER MICHIGAN PUBLIC ACT 345 OF 1990 AT A MEETING HELD ON

12-17-96  
ROIP  
COUNTY REPRESENTATIVE

C. Description of monument for corner and accessories established to perpetuate locating the position of the corner:

<u>G-11</u> ACCEPTED ABOVE PIPE AS BEST AVAILABLE EVIDENCE OF CORNER LOCATION. PLACED 2 1/2" STAMPED D.C. REMON. CORNER IN PIPE. NEW WITNESSES: CEDAR 8" N02°E (M.B.) 19.10' NAIL/TAG SPRUCE 16" N48°W (M.B.) 19.50' NAIL/TAG SPRUCE 12" N48°W (M.B.) 11.04' NAIL/TAG CARSONITE MARKER 2.0' SOUTH.	<u>H-9</u> ACCEPTED ABOVE IRON BAR AS BEST AVAILABLE EVIDENCE OF CORNER LOCATION. REPLACED BAR WITH 2 1/2" STAMPED D.C. REMON. CORNER. NEW BEARING TREES: MAPLE 18" N13°W (M.B.) 20.58' NAIL/TAG W. PINE 12" N87°E (M.B.) 20.70' NAIL/TAG DBL. OAK 36" S87°W (M.B.) 21.5' NAIL/TAG W. PINE 12" S22°W (M.B.) 12.86' NAIL/TAG CARSONITE MARKER 2.0' NORTH. HEAVY MAGNETIC VARIATION IN AREA
--	--

Signed by Robert F. Perkins

Date NOVEMBER 6, 1996

Surveyor's Michigan License No. 12027

FORM APPROVED BY MICHIGAN STATE BOARD OF PROFESSIONAL SURVEYORS, G.A.C. 28, 1971  
REVISED MAY 24, 1976  
REVISED JAN 1988

