

MAY 07 1997

COMMISSION

LAND CORNER RECORDATION CERTIFICATE
Filing Requirement of Act 74, Mich. P.A. 1970

RECORDED

1996 DEC 18 AM 11:16

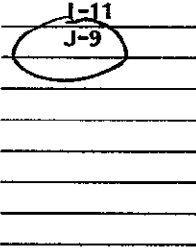
For corners in DICKINSON (County)

Located In:

Corner Code #

BREITUNG TWP.

- 1. Public Land Survey T 40N R 30W
2. Property Controlling in Section S T R
3. Miscellaneous Property in Section S T R

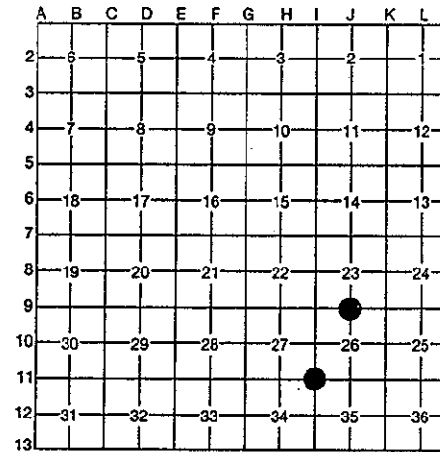


REGISTER OF DEEDS DICKINSON COUNTY

Handwritten number 44

Register of Deeds Stamp & File Number

- 4. Lot No. , Recorded Plat
5. Private Claims



I, ROBERT F. PERKINS, in a field survey on 8-14, 1996, do hereby certify that under requirements of P.A. 74, Michigan P.A. of 1970, the corner points mentioned in lines 1 and 2 above were in conformance with regulations and rules therefore as required in the current manual of survey instructions of the United States Department of the Interior, Bureau of Land Management or by a decree of a Court of Law and/or that the corner points mentioned in lines 3, 4 and 5 above were in conformance with the rules of the Michigan Board of Professional Surveyors or by a Decree of a Court of Law; established, re-established, monumented, re-monumented, recovered, found as expressed below:

NOTE: Not more than 4 corners, all in the same town and range, may be recorded on this certificate.

A. Description of original monument and accessories and/or subsequent restoration:

I-11 CORNER COMMON TO SECTIONS 26-27-34-35 POST BY J.H. MULLETT, D.S. 1849 ORIGINAL BEARING TREES ASPEN 8" S72°W 13 L. ASPEN 10" N51°E 20 L.

J-9 1/4 CORNER 23 26 POST BY J. H. MULLETT 1849 ORIGINAL BEARING TREES SUGAR 8" S33°E 27 L. SUGAR 6" N18°W 12 L.

B. Description of corner evidence found and/or method applied in restoring or reestablishing corner:

I-11 NO EVIDENCE OF ORIGINAL CORNER OR ACCESSORIES FOUND. FOUND 1 1/2" IRON PIPE. PIPE CHECKS WITH 1/4 CORNER TO WEST AND RECORDED SUBDIVISION PLAT TO NORTH.

J-9 NO EVIDENCE OF ORIGINAL CORNER OR ACCESSORIES FOUND. FOUND 2 NEWER BEARING TREES. CORNER ACCEPTED AND USED ON NUMEROUS SURVEYS. FOUND 1" X 24" SOLID IRON BAR

ACCEPTED BY THE DICKINSON COUNTY SURVEY PEER GROUP AS THE OFFICIAL CORNER UNDER MICHIGAN PUBLIC ACT 345 OF 1890 AT A MEETING HELD ON 12-17-96 R.F.P. COUNTY REPRESENTATIVE

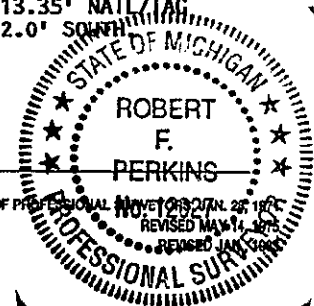
C. Description of monument for corner and accessories established to perpetuate locating the position of the corner:

I-11 ACCEPTED ABOVE DESCRIBED PIPE AS CORNER. PLACED 2 1/2" STAMPED D.C. REMON. CORNER IN EXISTING PIPE. NEW BEARING TREES: OAK 8" N60°W (M.B.) 8.52' NAIL/TAG OAK 6" NORTH (M.B.) 14.63' NAIL/TAG OAK 12" S32°E (M.B.) 11.18' NAIL/TAG OAK 8" N41°E (M.B.) 20.00' NAIL/TAG PLACED CARSONITE STAKE 2.0' NORTH.

J-9 ACCEPTED ABOVE DESCRIBED IRON BAR AS BEST AVAILABLE EVIDENCE OF CORNER LOCATION. REPLACED SAME WITH 2 1/2" STAMPED D.C. REMON. CORNER. NEW BEARING TREES: MAPLE 5" N50°W (M.B.) 16.93' NAIL/TAG MAPLE 5" N01°E (M.B.) 19.90' NAIL/TAG OAK 10" S18°W (M.B.) 16.43' NAIL/TAG OAK 8" N48°E (M.B.) 13.35' NAIL/TAG PLACED CARSONITE MARKER 2.0' SOUTH

Signed by Robert F. Perkins Surveyor's Michigan License No. 12027

Date NOVEMBER 6, 1996



FORM APPROVED BY MICHIGAN STATE BOARD OF PROFESSIONAL SURVEYORS