

MAY 07 1997

COMMISSION

LAND CORNER RECORDATION CERTIFICATE
Filing Requirement of Act 74, Mich. P.A. 1970

RECORDED

1996 DEC 17 AM 11:02

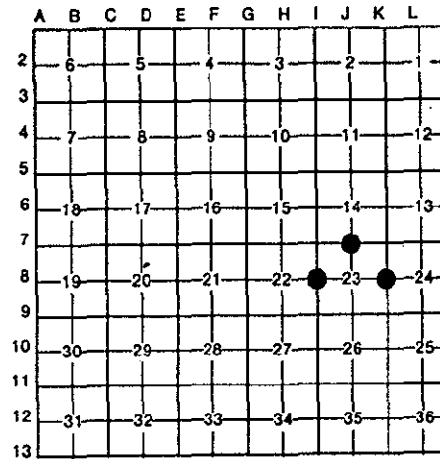
For corners in

Dickinson (County)	Located In:	Corner Code #
1. Public Land Survey	T 40 R 30W	I-8 ✓
	T 40 R 30W	J-7 ✓
	T 40 R 30W	K-8 ✓
2. Property Controlling in Section	S ___ T ___ R ___	
3. Miscellaneous Property in Sec.	S ___ T ___ R ___	
4. Lot No. _____, Recorded Plat _____		
5. Private Claims _____		

REGISTER OF DEEDS
DICKINSON COUNTY
IRON MOUNTAIN, MI 49801

Register of Deeds Stamp & File Number

I, James H. Moore, in a field survey on November 2, 1996, do hereby certify that under requirements of P.A. 74, Michigan P.A. of 1970, the corner points mentioned in lines 1 and 2 above were in conformance with regulations and rules therefore as required in the current manual of survey instructions of the United States Department of the Interior, Bureau of Land Management or by a decree of a Court of Law and/or that the corner points mentioned in lines 3, 4 and 5 above were in conformance with the rules of the Michigan Board of Land Surveyors or by a Decree of a Court of Law; established, re-established, monumented, re-monumented, recovered, found as expressed below:



NOTE: Not more than 4 corners, all in the same town and range, may be recorded on this certificate.

A. Description of original monument and accessories and/or subsequent restoration:

- | | | |
|--|---|---|
| I-8 West 1/4 Corner, Section 23
Post by J. Mullett, D.S. 1849
Original Bearing Trees
Hemlock 12" S 40° W 21 lks.
Hemlock 15" S 12° W 31 lks. | J-7 North 1/4 Corner Section 23
Post by J. Mullett, D.S. 1849
Original bearing Trees
Fir 10" S 60° W 04 lks.
Birch 10" S 65° E 15 lks.. | K-8 East 1/4 Corner Section 23
Post by J. Mullett, D.S. 1849
Original Bearing Trees
Sugar 6" N 51° W 11 lks.
Fir 8" S 30° E 19 lks. |
|--|---|---|

B. Description of corner evidence found and/or method applied in restoring or reestablishing corner:

- | | | |
|--|--|---|
| I-8 No evidence of Original Corner or accessories found.
Found 2 1/2" Pipe laying on it's side at approx. West end of rock pile, corner position confirmed by property owner and set to match previous survey work. | J-7 No evidence of Original Corner or accessories found.
Found 1/2" Rebar 3" below and 2.5' East of centerline of road. | K-8 No evidence of Original Corner or accessories found.
Found 1 1/2" Sq. Bolt at the intersection of fence line and centerline of road and found two bearing trees pointing toward corner position. |
|--|--|---|

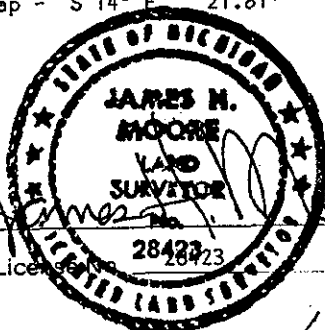
ACCEPTED BY THE DICKINSON COUNTY SURVEY PEER GROUP AS THE OFFICIAL CORNER UNDER MICHIGAN PUBLIC ACT 345 OF 1990 AT A MEETING HELD ON

12-17-96

COUNTY REPRESENTATIVE

C. Description of monument for corner and accessories established to perpetuate locating the position of the corner:

- | | | |
|--|---|---|
| I-8 Placed 2 1/2" Stamped Remon. Monument at position to match previous survey work.
Carsonite Marker North 1.00'
Rebar w/cap - S 74° E 13.10'
Basswood 12" S 55° E 43.03'
White Birch 8" S 50° E 73.90'
Rebar w/cap - S 14° E 21.81' | J-7 Placed 2 1/2" Stamped Remon. Cap over existing Rebar in Monument Box.
Cedar 10" N 85° E 25.70'
Cedar 4" S 50° E 32.83'
Cedar 6" N 79° W 52.09'
P. Pole # 80-2092 N 26° W 56.59' | K-8 Placed 2 1/2" Stamped Remon. Cap over existing Rebar in Monument Box.
P. Pole # 80-20163 N 76° E 32.72'
Hemlock 12" S 29° W 68.60'
Cedar 4" S 62° W 33.30'
Cedar 10" N 22° W 61.89' |
|--|---|---|



Signed by

Date May 1, 1996

Surveyor's Michigan License