

MAR 03 1998

SECTION LAND CORNER RECORDATION CERTIFICATE  
Filing Requirement of Act 74, Mich. P.A. 1970

RECORDED  
1997 DEC 10 PM 3:55

For corners in Dickinson Located In: Corner Code #  
(County)

City of Kingsford

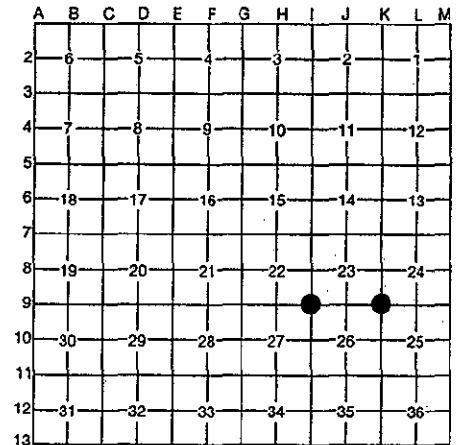
1. Public Land Survey	T 40N R 31W	I-9
	T R	K-9
	T R	
	T R	
2. Property Controlling in Section	S T R	
	S T R	
3. Miscellaneous Property in Section	S T R	
	S T R	

REGISTER OF DEEDS  
DICKINSON COUNTY  
RON MULLER, CLERK

Register of Deeds Stamp & File Number

4. Lot No. \_\_\_\_\_, Recorded Plat \_\_\_\_\_  
5. Private Claims \_\_\_\_\_

I, Robert F. Perkins, in a field survey on Oct. 3, 1997, do hereby certify that under requirements of P.A. 74, Michigan P.A. of 1970, the corner points mentioned in lines 1 and 2 above were in conformance with regulations and rules therefore as required in the current manual of survey instructions of the United States Department of the Interior, Bureau of Land Management or by a decree of a Court of Law and/or that the corner points mentioned in lines 3, 4 and 5 above were in conformance with the rules of the Michigan Board of Professional Surveyors or by a Decree of a Court of Law; established, re-established, monumented, re-monumented, recovered, found as expressed below:



NOTE: Not more than 4 corners, all in the same town and range, may be recorded on this certificate.

A. Description of original monument and accessories and/or subsequent restoration:

<p>I-9 Corner Common to Sections 22-23-26-27 Post by James H. Mullett, D.S. 1849 Original Bearing Trees Aspen 2" N70°E 6 Lks. Aspen 2" S50°W 3 Lks.</p>	<p>K-9 Corner Common to Sections 23-24-25-26 Post by James H. Mullett, D.S. 1849 Aspen 4" N33°E 16 Lks. Birch 4" S53°W 16 Lks.</p>
---	--

ACCEPTED BY THE DICKINSON COUNTY SURVEY PEER GROUP AS THE OFFICIAL CORNER UNDER MICHIGAN PUBLIC ACT 345 OF 1990 AT A MEETING HELD ON

12-9-97  
ROR

B. Description of corner evidence found and/or method applied in restoring or reestablishing corner: COUNTY REPRESENTATIVE

<p>I-9 No Evidence of Original Corner or Accessories Found. Found 4" Square Concrete Monument (S.W. Corner of Plat of Pine Ridge Estates). Monument replaced Iron Pipe in 1972 when Plat was prepared. Corner Location used and accepted on numerous Prior Surveys including Survey of Ford Airport.</p>	<p>K-9 No Evidence of Original Corner or Accessories Found. Found 1-3/4" Iron Pipe in Rock with several existing Pine B.T.'s. Corner indicated on City of Iron Mountain Survey Map by E.C. Muller dated 1950 and has been accepted and used on numerous Prior Surveys.</p>
--	--

C. Description of monument for corner and accessories established to perpetuate locating the position of the corner:

<p>I-9 Accepted above Described Monument and placed 2" Stamped Brass Disc over Iron Pin in Monument. New Witnesses: J. Pine 4" S11°W (M.B.) 28.55' W. Pine 3" S10°E (M.B.) 31.02' Aspen 3" S86°E (M.B.) 28.55' P. Pole #72-5047 N79°W (M.B.) 10.93' Carsonite Marker South 0.4'</p>	<p>K-9 Accepted above Described Pipe as Best Available Evidence of Corner Location. Placed 2 1/2" Stamped D.C. Remon. Corner inside of Existing Pipe. New Witnesses: R. Pine 24" N13°E (M.B.) 105.45' Nail/Tag P. Pole #N65-2972 N50°W (M.B.) 50.20' Nail/Tag. West Bolt in Chair Lift Case #8 S88°E (M.B.) 117.90' 7-3/4" Pipe Casing N78°W (M.B.) 304.20' Carsonite Marker N50°W (M.B.) 304.20'</p>
---	---

Signed by Robert F. Perkins Nov. 25, 1997 Date at P. Pole.  
Surveyor's Michigan License No. \_\_\_\_\_

FORM APPROVED BY MICHIGAN STATE BOARD OF PROFESSIONAL SURVEYORS, JAN 28, 1978  
NO. 12827  
REVISION 1987  
PROFESSIONAL SURVEYOR