

MAY 07 1997

RECORDED

COMMISSION

LAND CORNER RECORDATION CERTIFICATE

1996 DEC 18 AM 11:17

Filing Requirement of Act 74, Mich. P.A. 1970

For corners in DICKINSON

(County)

WAUCEDAH TWP.

Located In:

Corner Code #

- 1. Public Land Survey T 41N R 27W
2. Property Controlling in Section S T R
3. Miscellaneous Property in Section S T R

Table with 2 columns: Corner Code # (C-13, D-13) and empty rows for other codes.

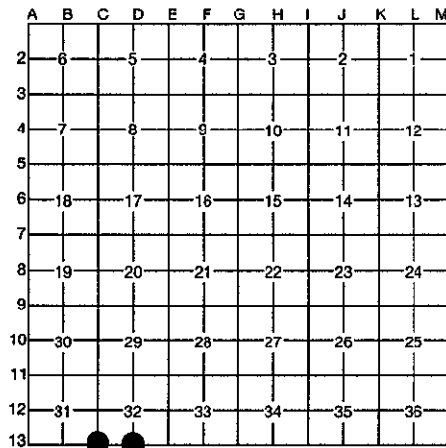
REGISTER OF DEEDS DICKINSON COUNTY RON MOUNTAIN MI 49801

29

Register of Deeds Stamp & File Number

- 4. Lot No. , Recorded Plat
5. Private Claims

I, ROBERT F. PERKINS, in a field survey on 10-16, 1996, do hereby certify that under requirements of P.A. 74, Michigan P.A. of 1970, the corner points mentioned in lines 1 and 2 above were in conformance with regulations and rules therefore as required in the current manual of survey instructions of the United States Department of the Interior, Bureau of Land Management or by a decree of a Court of Law and/or that the corner points mentioned in lines 3, 4 and 5 above were in conformance with the rules of the Michigan Board of Professional Surveyors or by a Decree of a Court of Law; established, re-established, monumented, re-monumented, recovered, found as expressed below:



NOTE: Not more than 4 corners, all in the same town and range, may be recorded on this certificate.

A. Description of original monument and accessories and/or subsequent restoration:

C-13 STANDARD CORNER COMMON TO SECTIONS 31 & 32 POST BY AUSTIN BURT, D.S. 1846 ORIGINAL BEARING TREES SUGAR 7" N68°E 20 L. SUGAR 14" N17 1/2°W 30 L.

D-13 SOUTH 1/4 CORNER SECTION 32 POST BY AUSTIN BURT, D.S. 1846 ORIGINAL BEARING TREES SUGAR 10" N9 1/2°E 3 1/4 L. HEMLOCK 6" N30 1/2°W 38 L.

B. Description of corner evidence found and/or method applied in restoring or reestablishing corner:

C-13 NO EVIDENCE OF ORIGINAL CORNER OR ACCESSORIES FOUND. FOUND 2" IRON PIPE AT CORNER OF ANCIENT FENCE LINES RUNNING EAST, WEST & NORTH. R. CAZZOLA, ADJOINING PROPERTY OWNER STATES THAT CORNER HAS BEEN IN PLACE OVER 50 YEARS.

D-13 NO EVIDENCE OF ORIGINAL CORNER OR ACCESSORIES REMAIN. CORNER ESTABLISHED ON A STRAIGHT LINE CONNECTING STANDARD SECTION CORNERS 2634.55' EAST AND 2634.55' WEST.

ACCEPTED BY THE DICKINSON COUNTY SURVEY PEER GROUP AS THE OFFICIAL CORNER UNDER MICHIGAN PUBLIC ACT 345 OF 1990 AT A MEETING HELD ON

12-17-96 RFP COUNTY REPRESENTATIVE

C. Description of monument for corner and accessories established to perpetuate locating the position of the corner:

C-13 ACCEPTED ABOVE DESCRIBED IRON PIPE AS BEST AVAILABLE EVIDENCE OF CORNER LOCATION. SET 3/4" STAMPED D.C. REMON. CAP & ROD INSIDE EXISTING 2" IRON PIPE. NEW BEARING TREES: S. MAPLE 9" S40°W (M.B.) 10.94' NAIL/TAG S. MAPLE 8" S02°E (M.B.) 19.44' NAIL/TAG S. MAPLE 7" S33°E (M.B.) 49.65' NAIL/TAG IRONWOOD 4" S75°W (M.B.) 23.68' CENTERLINE PLACED CARSONITE MARKER S45°W 1.0'.

D-13 SET 2 1/2" STAMPED D.C. REMON. MONUMENT AT ABOVE DESCRIBED LOCATION. NEW WITNESSES: FIR 3" S16°E (M.B.) 83.56' NAIL/TAG SPRUCE 7" S39°W (M.B.) 105.32' NAIL/TAG + CUT ON BOULDER S65°W (M.B.) 101.87' +CUT ON 5' FLAT ROCK S83°W (M.B.) 95.77'

Signed by [Signature]

Date NOVEMBER 6, 1996

Surveyor's Michigan License No. 12027

FORM APPROVED BY MICHIGAN STATE BOARD OF PROFESSIONAL SURVEYORS, JAN 22, 1978 REVISED JAN 1983

