

MAY 07 1997

COMMISSION

LAND CORNER RECORDATION CERTIFICATE
Filing Requirement of Act 74, Mich. P.A. 1970

RECORDED

1996 DEC 18 AM 11:17

For corners in

DICKINSON

(County)

Located In:

Corner Code #

WAUCEDAHA TWP.

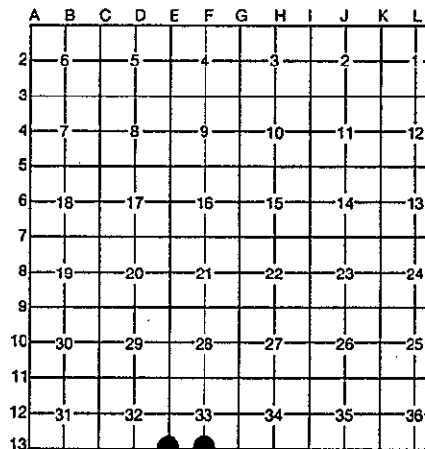
- 1. Public Land Survey T 41N R 27W E-13
T _____ R _____ E-13
T _____ R _____
T _____ R _____
- 2. Property Controlling S _____ T _____ R _____
in Section S _____ T _____ R _____
- 3. Miscellaneous S _____ T _____ R _____
Property in Section S _____ T _____ R _____
- 4. Lot No. _____, Recorded Plat _____
- 5. Private Claims _____

REGISTER OF DEEDS
DICKINSON COUNTY
IRON MOUNTAIN, MICH. 49801

27

Register of Deeds Stamp & File Number

I, ROBERT F. PERKINS, in a field survey on 10-15, 19 96, do hereby certify that under requirements of P.A. 74, Michigan P.A. of 1970, the corner points mentioned in lines 1 and 2 above were in conformance with regulations and rules therefore as required in the current manual of survey instructions of the United States Department of the Interior, Bureau of Land Management or by a decree of a Court of Law and/or that the corner points mentioned in lines 3, 4 and 5 above were in conformance with the rules of the Michigan Board of Professional Surveyors or by a Decree of a Court of Law; established, re-established, monumented, re-monumented, recovered, found as expressed below:



NOTE: Not more than 4 corners, all in the same town and range, may be recorded on this certificate.

A. Description of original monument and accessories and/or subsequent restoration:

F-13 SOUTH 1/4 CORNER SECTION 33
POST BY AUSTIN BURT, D.S. 1846
ORIGINAL BEARING TREES
SUGAR 6" N24°E 18 L.
SUGAR 6" N21 1/2°W 20 L.

E-13 STANDARD CORNER BETWEEN SECTIONS 32 & 33
POST BY AUSTIN BURT, D.S. 1846
ORIGINAL BEARING TREES
CEDAR 12" N11°E 10 L. (FOUND STUMP)
CEDAR 12" N38°W 24 L.

B. Description of corner evidence found and/or method applied in restoring or reestablishing corner:

F-13 NO EVIDENCE OF ORIGINAL CORNER OR ACCESSORIES FOUND. CORNER ESTABLISHED ON A STRAIGHT LINE CONNECTING STANDARD SECTION CORNERS 2646.51' EAST AND 2636.51' WEST.

E-13 FOUND 16" CEDAR STUMP WITH LOWER BLAZE, FITS FOR GOV'T. B.T. "CEDAR 12" N11°E 10 L." ALSO CORNER OF ANCIENT FENCE LINE NORTH AND WEST & OLD ROAD RUNNING NORTH AND WEST.

ACCEPTED BY THE DICKINSON COUNTY SURVEY PLOTTING GROUP AS THE OFFICIAL CORNER UNDER MICHIGAN PUBLIC ACT 345 OF 1990 AT A MEETING HELD ON 12-17-96
ROFP
COUNTY REPRESENTATIVE

C. Description of monument for corner and accessories established to perpetuate locating the position of the corner:

F-13 SET 2 1/2" STAMPED D.C. REMON. MONUMENT AT ABOVE LOCATION.
NEW BEARING TREES:
FIR 4" N60°E (M.B.) 9.94' CENTERLINE
FIR 3" N82°E (M.B.) 10.08' CENTERLINE
W. PINE 2" S12°W (M.B.) 14.19' CENTERLINE
ASPEN 5" S65°W (M.B.) 13.24' NAIL/TAG
EX. 1" IRON PIPE (NEW) S53°W (M.B.) 28.16'
PLACED CARSONITE STAKE 1.0' NORTH OF CORNER.

E-13 SET 3 1/2" STAMPED D.C. REMON. CAP ON 6' ROD FROM B.T. STUMP DESCRIBED ABOVE.
NEW BEARING TREES:
CEDAR 8" N15°E (M.B.) 11.90' NAIL/TAG
CEDAR 8" N75°E (M.B.) 21.83' NAIL/TAG
CEDAR 6" S05°E (M.B.) 34.34' NAIL/TAG
TAMARACK 12" S78°W (M.B.) 49.85' NAIL/TAG
CORNER FENCE POST N45°W (M.B.) ± 1'
PLACED CARSONITE MARKER 4.0' WEST OF CORNER.

Signed by Robert F. Perkins

Date NOVEMBER 6, 1996

Surveyor's Michigan License No. 12027

FORM APPROVED BY MICHIGAN STATE BOARD OF PROFESSIONAL SURVEYORS
REVISED JAN 1995

