

LAND CORNER RECORDATION CERTIFICATE
Filing Requirement of Act 74, Mich. P.A. 1970

For corners in
Dickinson

(County)

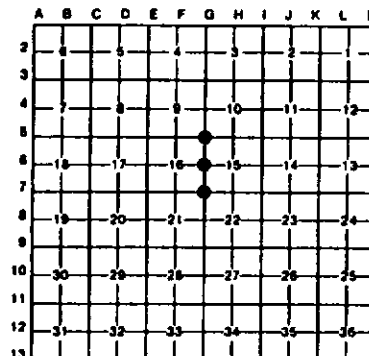
Located in:

Corner Code #

1. Public Land Survey	T	<u>41N</u>	R	<u>28W</u>	<u>67</u>
	T	<u>41N</u>	R	<u>28W</u>	<u>65</u>
	T	<u>41N</u>	R	<u>28W</u>	<u>66</u>
	T		R		
2. Property Controlling in Section	S		T	R	
	S		T	R	
3. Miscellaneous Property in Sec.	S		T	R	
	S		T	R	

Register of Deeds Stamp & File Number

4. Lot No. _____, Recorded Plat _____
 5. Private Claims _____



I, Stephan J. Szyszkoski, in a field survey on May 05, 1993, 19____, do hereby certify that under requirements of P.A. 74, Michigan P.A. of 1970, the corner points mentioned in lines 1 and 2 above were in conformance with regulations and rules therefore as required in the current manual of survey instructions of the United States Department of the Interior, Bureau of Land Management or by a decree of a Court of Law and/or that the corner points mentioned in lines 3, 4 and 5 above were in conformance with the rules of the Michigan Board of Land Surveyors or by a Decree of a Court of Law; established, re-established, monumented, re-monumented, recovered, found as expressed below:

NOTE: Not more than 4 corners, all in the same town and range, may be recorded on this certificate.

A. Description of original monument and accessories and/or subsequent restoration:

- (67) Section corner common to sections 15-16-21-22. Corner recorded in 1979 by A.O. Enger, RLS: 1" I.D.x36" iron pipe with 3/4" aluminum cap. NBTs were Sugar Maple 7 S15N 20.9', Sugar Maple 9 N09E 25.3'. Found no subsequent record.
 (65) Section corner common to Sections 9-10-15-16. Corner recorded in 1979 by A.O. Enger, RLS: 1" I.D.x36" iron pipe with 3/4" aluminum cap. Sugar Maple 9 N56N 17.0', Cedar 11 S12E 47.6'. Found no subsequent record.
 (66) Quarter corner common to Sections 15-16. Corner recorded in 1979 by A.O. Enger, RLS: 1" I.D.x36" iron pipe with 3/4" aluminum cap. Sugar Maple 6 S43E 7.3', Sugar Maple 5 N16N 27.1'. Found no subsequent record.

B. Description of corner evidence found and/or method applied in restoring or reestablishing corner:

- (67) Found the 1979 monument in good condition at record bearing and distance from the 1979 NBTs, both in good condition, with blazes overgrown. Marked two new witnesses as shown below.
 (65) Found the 1979 monument, as described, in good condition, at record bearing and distance from the remaining 1979 NBT - Sugar 12" N52W, 17.0', in good condition. The Cedar NBT was not found. Marked three new witnesses as described below.
 (66) Found the 1979 monument, as described, in good condition, at record bearing and distance from the remaining 1979 NBT - Sugar 6 S44E 7.3', in good condition. The other NBT was not found. Marked three new witnesses as described below.

C. Description of monument for corner and accessories established to perpetuate locating the position of the corner:

- | | | |
|--|---|---|
| (67) Fd. 1" iron pipe with MDNR cap. Blazed and scribed the following:
10" Sugar S18W 20.8' "S21 NBT"
12" Sugar N13E 25.3' "S15 NBT"
8" Sugar N49W 6.8' "S16 NBT"
6" Sugar S45E 9.6' "S22 NBT"
Bearings are magnetic. | (65) Found 1" iron pipe with MDNR cap. Blazed and scribed the following new bearing trees:
6" Maple W27E 27.0' "S10 NBT"
12" Maple S35E 3.5' "S15 NBT"
5" Cedar S32W 41.7' "S16 NBT"
Bearings are magnetic. | (66) Found 1" iron pipe with MDNR cap. Blazed and scribed the following new bearing trees:
5" Sugar S30W 2.7' "1/4S NBT"
8" Sugar N52W 36.2' "1/4S NBT"
4" Sugar N52E 16.7' "1/4S NBT"
Bearings are magnetic. |
|--|---|---|

Signed by Stephan J. Szyszkoski
 Surveyor's Michigan License No. 33986

Date 9-21-94

