

LAND CORNER RECORDATION CERTIFICATE
 Filing Requirement of Act 74, Mich. P.A. 1970

RECORDED

1998 DEC 14 PM 12:24

For corners in

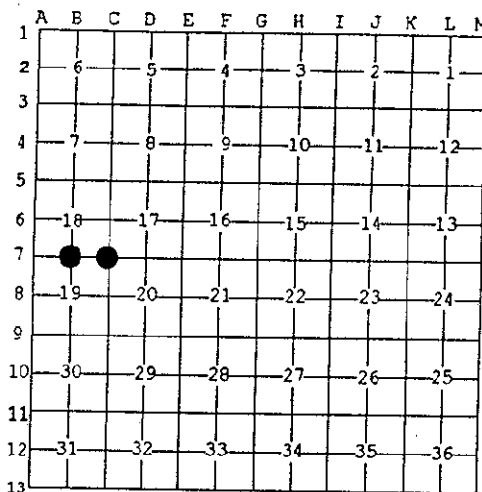
<u>Dickinson</u>	Located In:	Corner Code #
<u>Norway</u> (County) <u>Twp.</u>		
1. Public Land Survey	T <u>41N</u> R <u>29W</u>	<u>B-7</u>
	T <u> </u> R <u> </u>	<u>C-7</u>
	T <u> </u> R <u> </u>	
	T <u> </u> R <u> </u>	
2. Property Controlling in Section	S <u> </u> T <u> </u> R <u> </u>	
	S <u> </u> T <u> </u> R <u> </u>	
3. Miscellaneous Property in Sec.	S <u> </u> T <u> </u> R <u> </u>	
	S <u> </u> T <u> </u> R <u> </u>	

REGISTERED AS PLAT
 DICKINSON COUNTY
 FOR MICHIGAN

Register of Deeds Stamp & File Number

4. Lot No. _____, Recorded Plat _____ SECTION _____
 5. Private Claims _____

I, Robert F. Perkins, in a field survey on Nov. 4, 1998 do hereby state that under requirements of P.A. 74, Michigan P.A. of 1970, the corner points mentioned in lines 1 and 2 above were in conformance with regulations and rules therefore as required in the current manual of survey instructions of the United States Department of the Interior, Bureau of Land Management or by a decree of a Court of Law and for that the corner points mentioned in lines 3, 4 and 5 above were in conformance with the rules of the Michigan Board of Land Surveyors or by a Decree of a Court of Law; established, re-established, monumented, recovered, found as expressed below:



NOTE: Not more than 2 corners, all in the same town and range, may be recorded on this certificate.

A. Description of original monument and accessories and/or subsequent restoration:

<p>B-7 $\frac{1}{2}$ Corner Common to Sections $\frac{18}{19}$ Y. Pine $\frac{1}{2}$ Post by John Burt, D.S. 1849 Original Bearing Trees W. Birch 8" S20°E 10 Lk. W. Pine 10" N9°W 15 Lk.</p>	<p>C-7 Southeast Corner, Section 18 Post by John Burt, D.S. Oct. 10, 1849 Original Bearing Trees W. Pine 10" S75°W 12" W. Pine 10" N70°E 15"</p>
--	--

B. Description of corner evidence found and/or method applied in restoring or reestablishing corner:

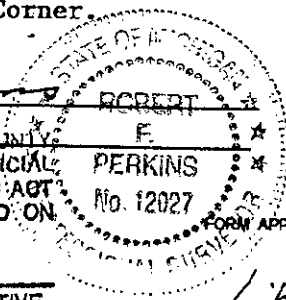
<p>B-7 No Evidence of Original Corner or Accessories Found. Found remains of Damaged 1" Iron Pipe D.N.R. Marker set by Billy Buckler, RLS in 1962 (Old Corner Report #648) 1962 Bearing Trees: W. Birch 8" N4°E 60½ Lk. Aspen 5" N62°E 08 Lk.</p>	<p>C-7 No Evidence of Original Corner or Accessories Found. Found 1" D.N.R. Pipe Monument with 4" Brass Cap set by Billy D. Buckler, RLS in 1962. (Old Corner Report #649) 1962 Bearing Trees: Red Oak 12" S44°E 20½ Lk. (Found) Red Maple 6" S77°E 49 Lk. Jack Pine 8" N56°W 55 Lk.</p>
--	---

C. Description of monument for corner and accessories established to perpetuate locating the position of the corner:

<p>B-7 Accepted Damaged Pipe Marker described in "B" above and Replaced same with 2½" Stamped D.C. Remon. Corner. New Witnesses: W. Pine 14" N05°W(M.B.) 46.30' Nail/Tag W. Pine 10" N70°E(M.B.) 60.00' Nail/Tag N. Pine 13" S20°W(M.B.) 17.85' Nail/Tag N. Pine 13" N70°W(M.B.) 26.05' Nail/Tag Placed Carsonite Marker at Corner.</p>	<p>C-7 Accepted Pipe Marker described in "B" above. New Witnesses: Oak 20" S44°E(M.B.) 14.10' Nail/Tag Oak 8" N88°E(M.B.) 33.20' Nail/Tag Oak 3" N10°W(M.B.) 44.50' Nail/Tag R. Pine 12" N38°E(M.B.) 129.70' Nail/Tag Placed Carsonite Marker 1.0' North.</p>
---	---

Signed by Robert F. Perkins Date Nov. 20, 1998

Surveyor's Michigan License No. 12027
 ACCEPTED BY THE DICKINSON COUNTY SURVEY PEER GROUP AS THE OFFICIAL CORNER UNDER MICHIGAN PUBLIC ACT 345 OF 1990 AT A MEETING HELD ON 12-7-98
R.F. Perkins
 COUNTY REPRESENTATIVE



Libert 2 Page 11

APPROVED BY MICHIGAN STATE BOARD OF PROFESSIONAL SURVEYORS, JAN. 28, 1971
 REVISED MAY 14, 1975
 REVISED JAN., 1983
 REVISED OCT., 1995