

**LAND CORNER RECORDATION CERTIFICATE**  
**Filing Requirement of Act 74, Mich. P.A. 1970**

RECORDED

1999 NOV 30 PM 3:31

For corners in

DICKINSON Located In: \_\_\_\_\_ Corner Code # \_\_\_\_\_  
 (County)  
NORWAY TOWNSHIP

1. Public Land Survey T 41 N R 29 W C-4  
T 41 N R 29 W E-4  
 T \_\_\_\_\_ R \_\_\_\_\_  
 T \_\_\_\_\_ R \_\_\_\_\_

2. Property Controlling in Section S \_\_\_\_\_ T \_\_\_\_\_ R \_\_\_\_\_ SURVEY & REMONUMENTATION

3. Miscellaneous Property in Sec. S \_\_\_\_\_ T \_\_\_\_\_ R \_\_\_\_\_ MAR 24 2000

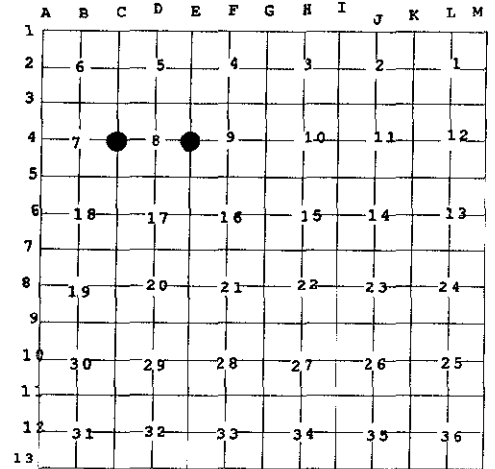
REGISTER OF DEEDS  
 DICKINSON COUNTY  
 IRON MOUNTAIN, MICHIGAN 49801

Register of Deeds Stamp & File Number

4. Lot No. \_\_\_\_\_, Recorded Plat \_\_\_\_\_ SECTION \_\_\_\_\_

5. Private Claims \_\_\_\_\_

I, JAMES H. MOORE, in a field survey on SEPTEMBER 28, 1999 do hereby state that under requirements of P.A. 74, Michigan P.A. of 1970, the corner points mentioned in lines 1 and 2 above were in conformance with regulations and rules therefore as required in the current manual of survey instructions of the United States Department of the Interior, Bureau of Land Management or by a decree of a Court of Law and /or that the corner points mentioned in lines 3, 4 and 5 above were in conformance with the rules of the Michigan Board of Land Surveyors or by a Decree of a Court of Law; established, re-established, monumented, recovered, found as expressed below:



**NOTE: Not more than 2 corners, all in the same town and range, may be recorded on this certificate.**

A. Description of original monument and accessories and/or subsequent restoration:

C-4 ¼ COMMON CORNER TO SECTIONS 7 - 8  
 PINE POST BY JOHN BURT, D.S. 1849  
 YELLOW PINE 22" S 69° E 55 LINKS  
 WHITE PINE 18" N 36° W 31 LINKS

E-4 ¼ CORNER COMMON TO SECTIONS 8 - 9  
 SPRUCE 12" BY JOHN BURT, D.S. 1849

B. Description of corner evidence found and/or method applied in restoring or reestablishing corner:

C-4 FOUND 1" PIPE WITH 4" BRASS CAP, SET BY BILL BUCKLER R.L.S. #08887

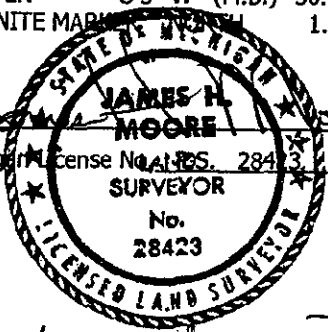
E-4 FOUND KIMBERLY-CLARKE CORP. 4" ALUMINUM CAP, SET BY EDWARD KAZIANKA RLS #14765. DATE STAMPED 6-7-66.

1961 BEARING TREES	1966 BEARING TREES
6" ASPEN S 43° E 4 ½ LINKS	11" RED PINE N 48° W 4 ½ LINKS
7" ASPEN S 45° W 25 LINKS	12" RED PINE N 50° E 18 LINKS
5" ASPEN N 56° W 7 LINKS	

C. Description of monument for corner and accessories established to perpetuate locating the position of the corner:

<u>C-4</u> FOUND ABOVE DESCRIBED MONUMENT IN PLACE. NEW WITNESSES	<u>E-4</u> FOUND ABOVE DESCRIBED MONUMENT IN PLACE. NEW WITNESSES
6" ASPEN N 34° E (M.B.) 3.15' NAIL/TAG	HIGH LINE POLE S 34° W (M.B.) 75.45' NAIL/TAG
4" WHITE PINE N 63° W (M.B.) 12.88' NAIL/TAG	5" SPRUCE S 23° E (M.B.) 56.08' NAIL/TAG
11" WHITE BIRCH S 55° E (M.B.) 41.12' NAIL/TAG	10" MAPLE S 82° E (M.B.) 24.98' NAIL/TAG
11" ASPEN S 5° W (M.B.) 50.43' NAIL/TAG	12" RED PINE N 71° E (M.B.) 29.55' NAIL/TAG
CARSONITE MARKER NORTH 1.00'	CARSONITE MARKER NORTH 1.00'

Signed by JAMES H. MOORE Date 11-8-99  
 Surveyor's Michigan License No. 28423



ACCEPTED BY THE DICKINSON COUNTY  
 CLERK UNDER MICHIGAN PUBLIC ACT  
 848 OF 1980 AT A MEETING HELD ON  
11-23-99  
 COUNTY REPRESENTATIVE