

RECORDED

1998 DEC 14 PM 12: 24

LAND CORNER RECORDATION CERTIFICATE
Filing Requirement of Act 74, Mich. P.A. 1970

For corners in

Dickinson

Located in:

Corner Code #

Norway Twp. (County)

1. Public Land Survey

T 41NR 29W D-7
T R D-9

2. Property Controlling in Section

S T R

3. Miscellaneous Property in Sec.

S T R
S T R
S T R

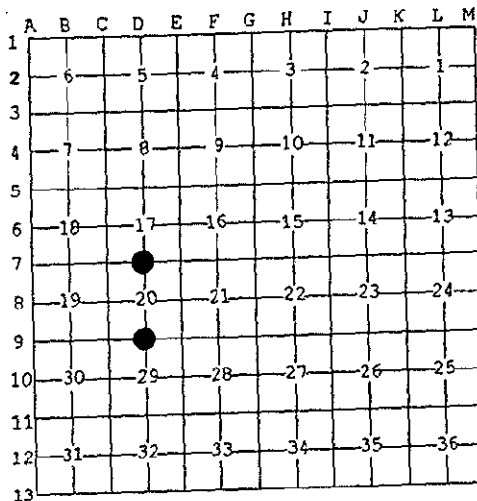
REGISTER OF DEEDS
DISKINSON COUNTY

Register of Deeds Stamp & File Number

4. Lot No. , Recorded Plat SECTION
5. Private Claims

I, Robert F. Perkins, in a field survey on Nov. 4, 1998 do hereby state that under requirements of P.A. 74, Michigan P.A. of 1970, the corner points mentioned in lines 1 and 2 above were in conformance with regulations and rules therefore as required in the current manual of survey instructions of the United States Department of the Interior, Bureau of Land Management or by a decree of a Court of Law and for that the corner points mentioned in lines 3, 4 and 5 above were in conformance with the rules of the Michigan Board of Land Surveyors or by a Decree of a Court of Law; established, re-established, monumented, recovered, found as expressed below:

NOTE: Not more than 2 corners, all in the same town and range, may be recorded on this certificate.



A. Description of original monument and accessories and/or subsequent restoration:

D-7 1/2 Corner Common to Sections 17
Post by John Burt, D.S. 10-2-1849
Original Bearing Trees
W. Birch 10" N65°E 35 Lk.
W. Birch 8" S50°W 28 Lk.

D-9 1/2 Corner Common to Sections 20
Post by John Burt, D.S. 10-8-1849
Original Bearing Trees
Hemlock 16" N22°E(M.B.) 11 Lk.
Hemlock 18" S37°W(M.B.) 13 Lk.

B. Description of corner evidence found and/or method applied in restoring or reestablishing corner:

D-7 No Evidence of Original Corner or its Accessories Found.
Found 1" D.N.R. Pipe Marker with 4" Brass Cap set by Billy D. Buckler, RLS 5-1-1961 (Old Corner Report #631)
1961 Bearing Trees:
J. Pine 9" S19°W 52 Lk.
W. Pine 8" N79°W 32 1/2 Lk. (Found)

D-9 No Evidence of Original Corner or its Accessories Found.
Found 1" Pipe D.N.R. Marker with 4" Brass Cap set by Billy D. Buckler, RLS in 1960. (Old Corner Report #416).
1960 Bearing Trees:
Maple 8" N78°W 52 Lk. (Found)
Maple 6" N30°E 28 Lk.

C. Description of monument for corner and accessories established to perpetuate locating the position of the corner:

D-7 Found and Accepted Pipe Marker described in "B" above.
New Witnesses:
Oak 6" S75°W(M.B.) 11.33' Nail/Tag
S. Maple 10" S88°E(M.B.) 38.55' Nail/Tag
Fir 6" N08°W(M.B.) 12.45' Nail/Tag
R. Maple 3" S18°W(M.B.) 26.68' Nail/Tag
W. Pine 14" N79°W(M.B.) 1962 B.T.
Placed Carsonite Marker 1.0' North.

D-7 Found and Accepted Pipe Marker described in "B" above.
New Witnesses:
Maple 4" S87°E(M.B.) 10.68' Nail/Tag
Maple 12" N78°W(M.B.) 34.53' Nail/Tag
Maple 3" N23°E(M.B.) 15.15' Nail/Tag
W. Birch 14" S23°W(M.B.) 14.95' Nail/Tag
Rock Bluff South ±50'
Placed Carsonite Marker 0.80' West.

Signed by

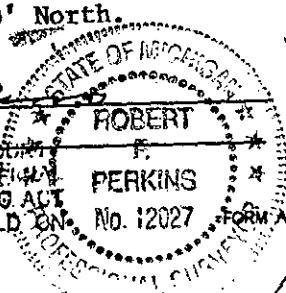
Robert F. Perkins

Surveyor's Michigan License No. 12027

ACCEPTED BY THE DISKINSON COUNTY SURVEY PEER GROUP AS THE OFFICIAL CORNER UNDER MICHIGAN PUBLIC ACT 345 OF 1990 AT A MEETING HELD ON

12-7-98

ROB PERKINS COUNTY REPRESENTATIVE



Date Nov. 20, 1998

Liber 2

Page 2102

FORM APPROVED BY MICHIGAN STATE BOARD OF PROFESSIONAL SURVEYORS, JAN. 28, 1971
REVISED MAY 14, 1975
REVISED JAN., 1983
REVISED OCT., 1995