

RECORDED

LAND CORNER RECORDATION CERTIFICATE

Filing Requirement of Act 74, Mich. P.A. 1970 1998 DEC 14 PM 12:24

For corners in

Dickinson

Located In:

Corner Code #

Norway Twp. (County)

1. Public Land Survey

T 41NR 29W

E-9

T R

F-5

T R

T R

2. Property Controlling in Section

S T R

S T R

3. Miscellaneous Property in Sec.

S T R

S T R

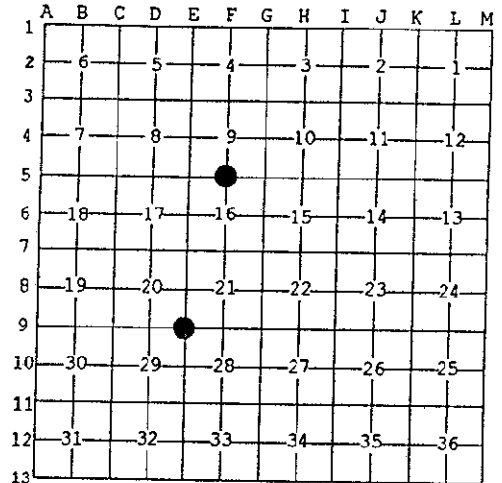
REGISTER OF DEEDS
DICKINSON COUNTY
MICHIGAN

Register of Deeds Stamp & File Number

4. Lot No. _____, Recorded Plat _____ SECTION
5. Private Claims _____

I, Robert F. Perkins, in a field survey on Nov. 3, 1998 do hereby state that under requirements of P.A. 74, Michigan P.A. of 1970, the corner points mentioned in lines 1 and 2 above were in conformance with regulations and rules therefore as required in the current manual of survey instructions of the United States Department of the Interior, Bureau of Land Management or by a decree of a Court of Law and /or that the corner points mentioned in lines 3, 4 and 5 above were in conformance with the rules of the Michigan Board of Land Surveyors or by a Decree of a Court of Law; established, re-established, monumented, recovered, found as expressed below:

NOTE: Not more than 2 corners, all in the same town and range, may be recorded on this certificate.



A. Description of original monument and accessories and/or subsequent restoration:

E-9 Southeast Corner, Section 20
Cedar Post by John Burt, D.S. 10-4-1849
Original Bearing Trees
Hemlock 18" S15°E 12 Lk.
Hemlock 22" N 5°W 14 Lk.

F-5 1/4 Corner Common to Sections 16
Post by John Burt, D.S. 10-7-1849
Original Bearing Trees
Spruce 10" N50°E 21 Lk.
W. Birch 12" S85°W 35 Lk.

B. Description of corner evidence found and/or method applied in restoring or reestablishing corner:

E-9 No evidence or Original Corner or its Accessories Found.
Found 1" D.N.R. Pipe Marker with 4" Brass Cap Set by Billy D. Buckler, RLS in 1957 (Old Corner Report #289).
1957 Bearing Trees:
Y. Birch 13" S 5°E 53 Lk. (Found)
Maple 12" N18°W 33 Lk.
Maple 8" N56°E 60 Lk.

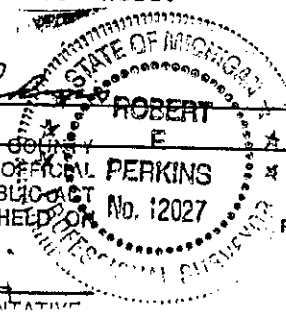
F-5 No Evidence of Original Corner or its Accessories Remain.
Found 1" Pipe D.N.R. Marker with 4" Brass Cap Set by Billy D. Buckler, RLS in 1960 (Old Corner Report #414)
1960 Bearing Trees:
Spruce 9" N45°W 31 1/2 Lk. (Found)
Aspen 10" N54°E 19 1/2 Lk.

C. Description of monument for corner and accessories established to perpetuate locating the position of the corner:

E-9 Found and Accepted Pipe Marker described in "B" above.
New Witnesses:
W. Birch 14" N26°E(M.B.) 3.85' Nail/Tag
Maple 5" N73°W(M.B.) 19.50' Nail/Tag
Maple 7" S50°E(M.B.) 9.70' Nail/Tag
Y. Birch 16" S05°E(M.B.) 35.10' Nail/Tag
Placed Carsonite Marker 1.0' West.

F-5 Found and Accepted Pipe Marker described in "B" above.
New Witnesses:
Spruce 18" N45°W(M.B.) 20.80' Ex. B.T.
Spruce 6" N28°E(M.B.) 5.70' Nail/Tag
Spruce 8" S54°E(M.B.) 23.25' Nail/Tag
Spruce 8" S22°W(M.B.) 49.00' Nail/Tag
Plced Carsonite Marker 1.0' North.

Signed by Robert F. Perkins
Surveyor's Michigan License No. 12027
ACCEPTED BY THE DICKINSON COUNTY SURVEY PEER GROUP AS THE OFFICIAL CORNER UNDER MICHIGAN PUBLIC ACT 345 OF 1990 AT A MEETING HELD ON 12-7-98
Robert F. Perkins
COUNTY REPRESENTATIVE



Date Nov. 20, 1998