

RECORDED

LAND CORNER RECORDATION CERTIFICATE  
Filing Requirement of Act 74, Mich. P.A. 1970

1998 DEC 14 PM 12:24

For corners in

Dickinson

Located in:

Corner Code #

(County)  
Norway Twp.

1. Public Land Survey

T 41NR 29W

E-9

T \_\_\_ R \_\_\_

F-5

T \_\_\_ R \_\_\_

T \_\_\_ R \_\_\_

2. Property Controlling  
In Section

S \_\_\_ T \_\_\_ R \_\_\_

S \_\_\_ T \_\_\_ R \_\_\_

3. Miscellaneous  
Property in Sec.

S \_\_\_ T \_\_\_ R \_\_\_

S \_\_\_ T \_\_\_ R \_\_\_

REGISTER OF DEEDS  
DICKINSON COUNTY  
RON MOORE, CLERK

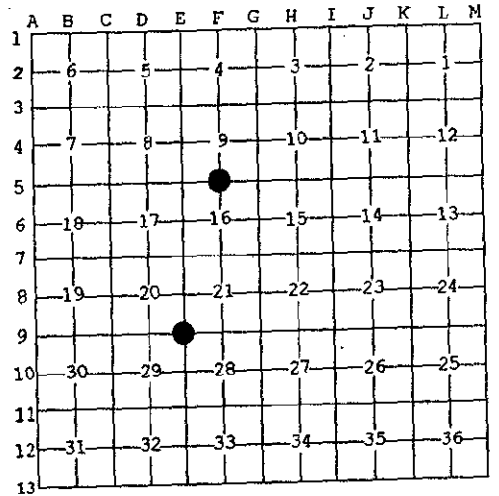
Register of Deeds Stamp & File Number

4. Lot No. \_\_\_\_\_, Recorded Plat \_\_\_\_\_ SECTION

5. Private Claims \_\_\_\_\_

I, Robert F. Perkins, in a field survey on Nov. 3, 1998 do hereby state that under requirements of P.A. 74, Michigan P.A. of 1970, the corner points mentioned in lines 1 and 2 above were in conformance with regulations and rules therefore as required in the current manual of survey instructions of the United States Department of the Interior, Bureau of Land Management or by a decree of a Court of Law and/or that the corner points mentioned in lines 3, 4 and 5 above were in conformance with the rules of the Michigan Board of Land Surveyors or by a Decree of a Court of Law; established, re-established, monumented, recovered, found as expressed below:

NOTE: Not more than 2 corners, all in the same town and range, may be recorded on this certificate.



A. Description of original monument and accessories and/or subsequent restoration:

E-9 Southeast Corner, Section 20  
Cedar Post by John Burt, D.S. 10-4-1849  
Original Bearing Trees  
Hemlock 18" S15°E 12 Lk.  
Hemlock 22" N 5°W 14 Lk.

F-5 ¼ Corner Common to Sections 16  
Post by John Burt, D.S. 10-7-1849  
Original Bearing Trees  
Spruce 10" N50°E 21 Lk.  
W.Birch 12" S85°W 35 Lk.

B. Description of corner evidence found and/or method applied in restoring or reestablishing corner:

E-9 No evidence or Original Corner  
or its Accessories Found.  
Found 1" D.N.R. Pipe Marker with  
4" Brass Cap Set by Billy D. Buckler, RLS  
in 1957 (Old Corner Report #289).  
1957 Bearing Trees:  
Y. Birch 13" S 5°E 53 Lk. (Found)  
Maple 12" N18°W 33 Lk.  
Maple 8" N56°E 60 Lk.

F-5 No Evidence of Original Corner  
or its Accessories Remain.  
Found 1" Pipe D.N.R. Marker with  
4" Brass Cap Set by Billy D. Buckler,  
RLS in 1960 (Old Corner Report #414)  
1960 Bearing Trees:  
Spruce 9" N45°W 31½ Lk. (Found)  
Aspen 10" N54°E 19½ Lk.

C. Description of monument for corner and accessories established to perpetuate locating the position of the corner:

E-9 Found and Accepted Pipe Marker described  
in "B" above.  
New Witnesses:  
W.Birch 14" N26°E(M.B.) 3.85' Nail/Tag  
Maple 5" N73°W(M.B.) 19.50' Nail/Tag  
Maple 7" S50°E(M.B.) 9.70' Nail/Tag  
Y.Birch 16" S05°E(M.B.) 35.10' Nail/Tag  
Placed Carsonite Marker 1.0' West.

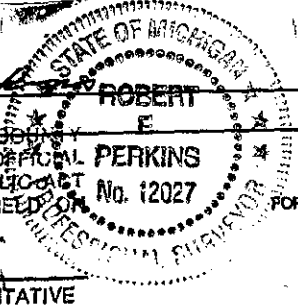
F-5 Found and Accepted Pipe Marker  
described in "B" above.  
New Witnesses:  
Spruce 18" N45°W(M.B.) 20.80' Ex. B.T.  
Spruce 6" N28°E(M.B.) 5.70' Nail/Tag  
Spruce 8" S54°E(M.B.) 23.25' Nail/Tag  
Spruce 8" S22°W(M.B.) 49.00' Nail/Tag  
Plced Carsonite Marker 1.0' North.

Signed by

Robert F. Perkins

Surveyor's Michigan License No. 12027

ACCEPTED BY THE DICKINSON COUNTY  
SURVEY PEER GROUP AS THE OFFICIAL  
CORNER UNDER MICHIGAN PUBLIC ACT  
345 OF 1990 AT A MEETING HELD ON  
12-7-98



Date

Nov. 20, 1998

FORM APPROVED BY MICHIGAN STATE BOARD OF PROFESSIONAL SURVEYORS, JAN. 26, 1971  
REVISED MAY 14, 1975  
REVISED JAN., 1983  
REVISED OCT., 1985

COUNTY REPRESENTATIVE

Libe 2 Page 404