

RECORDED

1993 DEC 20 PM 2:34

LAND CORNER RECORDATION CERTIFICATE
Filing Requirement of Act 74, Mich. P.A. 1970

For corners in

Dickinson (County) Located In: Corner Code #
1. Public Land Survey T 41 N R 29 W E-5
T 41 N R 29 W F-7
T 41 N R 29 W G-5
T 41 N R 29 W G-6
2. Property Controlling S T R
in Section S T R
3. Miscellaneous S T R
Property in Sec. S T R

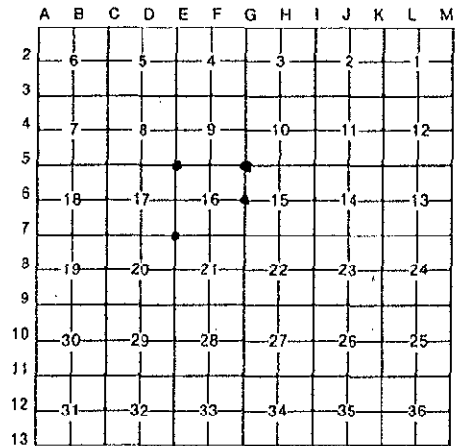
REGISTER OF DEEDS
DICKINSON COUNTY

ACCEPTED BY THE DICKINSON COUNTY
SURVEY PEER GROUP AS THE OFFICIAL
CORNER UNDER MICHIGAN PUBLIC ACT
345 OF 1990 AT A MEETING HELD ON
6-7-94
RSP
COUNTY REPRESENTATIVE

Register of Deeds Stamp & File Number

4. Lot No. , Recorded Plat
5. Private Claims

I, Ewart C. Muller, in a field survey on October, 1993, do hereby certify that under requirements of P.A. 74, Michigan P.A. of 1970, the corner points mentioned in lines 1 and 2 above were in conformance with regulations and rules therefore as required in the current manual of survey instructions of the United States Department of the Interior, Bureau of Land Management or by a decree of a Court of Law and/or that the corner points mentioned in lines 3, 4 and 5 above were in conformance with the rules of the Michigan Board of Land Surveyors or by a Decree of a Court of Law; established, re-established, monumented, re-monumented, recovered, found as expressed below:



NOTE: Not more than 4 corners, all in the same town and range, may be recorded on this certificate.

A. Description of original monument and accessories and/or subsequent restoration:

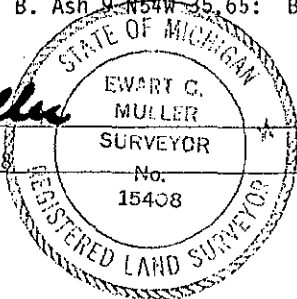
- E-5 Original Witnesses: Set Cedar Post Corner of Sections 8,9,16 & 17. John Burt/Lucius Lyon 4/27/1849. Tamarack 10 S48 E 19 lks: Spruce 12 N 57 W 12 lks.
E-7 Original Witnesses: W. Pine 24 Corner of Sections 16,17,20 & 21. W. Pine 24 N 81 W 25 lks.
G-5 Original Witnesses: Set Spruce Post Corner of Sections 9,10,15 & 16. W. Pine 12 S 50 W 18 lks: W. Pine 10 N 50 E 23 lks.
G-6 Original Witnesses: Set B. Ash Post Quarter Section corner between Sections 15 & 16. Elm 24 S 57 W 105 lks: Elm 16 N 56 E 97 lks.
B. Description of corner evidence found and/or method applied in restoring or reestablishing corner:
E-5 DNR NBT's: Set one-inch iron pipe/brass cap at a found square post. N.Pine 18 N64E 101.00 ft.(fd.): Balsam 5 S70E 68.8(fd./dead): Cedar 4 N60W 137.3(Cut during r/w clearing).
E-7 DNR NBT's: Set one-inch iron pipe/brass cap by double proportion/Section corners North and South/ 1/4 East and Db1 Spruce 6 S79W 60 lks(fd./dead): Balsam 6 S36E 36 1/2 lks (fd./dead). Section Corner West.
G-5 DNR NBT's: Set one-inch iron pipe/brass cap at found post in pile of rocks. Y. Pine 11 N12W 3 lks(fd.): Y. Pine 12 N60E 35 lks(fd.): Y. Pine 6 S47W 15 1/2 lks(fd.)
G-6 DNR NBT's: Set one-inch iron pipe/brass cap midway on line between Section corners North & South. Elm 12 N35W 88 lks(fd/dead): Elm 8 N72W 83 lks(fd/dead).

C. Description of monument for corner and accessories established to perpetuate locating the position of the corner: Magnetic Bearings

- E-5 Found DNR iron pipe/brass cap/square post on East side of WEPCO R/W. [Measurements to 16d nail in notch/side of tree. NBT's: Cedar 7 N60W 138.10: Db1 Cedar 10 S80W 131.40: Tamarack S55E 19.85: N.Pine 18 N64E 101.3.
E-7 Found DNR iron pipe/brass cap between WEPCO r/w west and woods road east. NBT's: Db1 Spruce 10 N20W 21.30: Spruce 16 N20E 42.80: Db1 R.Mpl 11 S42W 30.20: Balsam 18 S36E 24.80.
G-5 Found DNR iron pipe/brass cap east of woods road. NBT's: Y.pine 16 N15W 2.85: Y.Pine 11 S46W 10.15: Y.pine 17 N65E 23.80: Y.Pine 15 N88E 16.00.
G-6 Found DNR iron pipe/brass cap/square post near west edge swale/east of fire lane. NBT's: B.Ash 10 S82W 38.75: B. Ash 9 N54W 35.65: Balm 8 N38E 10.95: Balm 7 S50W 12.45.

Signed by Ewart C. Muller Date December 17, 1993

Surveyor's Michigan License No. 15408



Liben 2 Page 75