

LAND CORNER RECORDATION CERTIFICATE
Filing Requirement of Act 74, Mich. P.A. 1970

RECORDED

1999 NOV 30 PM 3:31

For corners in

DICKINSON Located In: _____ Corner Code # _____
 (County)

NORWAY TOWNSHIP

1. Public Land Survey T 41 N R 29 W G-9
 T 41N R 29 W G-10
 T _____ R _____
 T _____ R _____
 2. Property Controlling S _____ T _____ R _____ SURVEY &
 in Section S _____ T _____ R _____ RECONSTITUTION
 3. Miscellaneous S _____ T _____ R _____
 Property in Sec. S _____ T _____ R _____

REGISTER OF DEEDS
 DICKINSON COUNTY
 ROOM 2000 111 W. 23RD

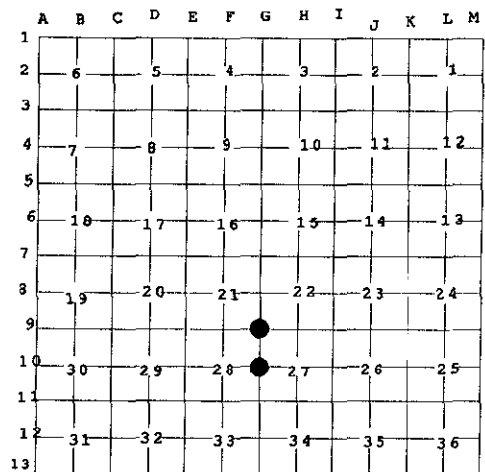
Register of Deeds Stamp & File
 Number

MAR 24 2000

4. Lot No. _____, Recorded Plat _____ SECTION _____

5. Private Claims _____

I, JAMES H. MOORE, in a field survey on AUGUST 25 & SEPTEMBER 2, 19 99 do hereby state that under requirements of P.A. 74, Michigan P.A. of 1970, the corner points mentioned in lines 1 and 2 above were in conformance with regulations and rules therefore as required in the current manual of survey instructions of the United States Department of the Interior, Bureau of Land Management or by a decree of a Court of Law and /or that the corner points mentioned in lines 3, 4 and 5 above were in conformance with the rules of the Michigan Board of Land Surveyors or by a Decree of a Court of Law; established, re-established, monumented, recovered, found as expressed below:



NOTE: Not more than 2 corners, all in the same town and range, may be recorded on this certificate.

A. Description of original monument and accessories and/or subsequent restoration:

G-9 CORNER COMMON TO SECTIONS 21-22-27-28
 SET CEDAR POST BY JOHN BURT, D.S. 1849
 YELLOW BIRCH 12" N 61° E 35 LINKS
 BLACK ASH 12" S 47° W 65 LINKS

G-10 1/4 CORNER COMMON TO SECTIONS 27-28
 SET CEDAR POST BY JOHN BURT, D.S. 1849
 YELLOW PINE 16" N 58° W 50 LINKS
 WHITE PINE 18" S 64° E 25 LINKS

B. Description of corner evidence found and/or method applied in restoring or reestablishing corner:

G-9 FOUND 1" PIPE WITH 4" MICHIGAN DEPARTMENT
 OF CONSERVATION BRASS CAP, SET BY BILL
 BUCKLER R.L.S. #08887.

G-10 FOUND 1" PIPE WITH 4" ALUMINUM CAP IN A ROCK
 PILE. FOUND 3' ABOVE GROUND ON OUT CROP.
 SET BY BILL BUCKLER R.L.S. #08887.

1955 BEARING TREES

1955 BEARING TREES

15" YELLOW BIRCH N 19° W 19 LINKS
 9" SOFT MAPLE S36° E 14 LINKS

12" HEMLOCK S 62° W 66 LINKS
 12" CEDAR N 02° E 55 LINKS

C. Description of monument for corner and accessories established to perpetuate the position of the corner:

G-9 FOUND ABOVE DESCRIBED MONUMENT IN PLACE.
 NEW WITNESSES.

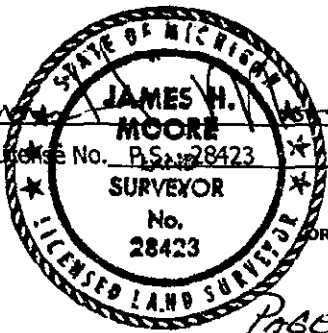
G-10 FOUND ABOVE DESCRIBED MONUMENT IN PLACE.
 NEW WITNESSES

FOUND 10" MAPLE S 31° E (M.B.) 9.11' NAIL/TAG
 FOUND 22" YELLOW BIRCH N 15° W (M.B.) 13.46' NAIL/TAG
 8" CEDAR S 85° W (M.B.) 21.65' NAIL/TAG
 10" MAPLE N 79° W (M.B.) 14.42' NAIL/TAG
 CARSONITE MARKER SOUTH 0.65'

8" MAPLE S 79° E (M.B.) 15.25' NAIL/TAG
 6" MAPLE N 54° E (M.B.) 26.90' NAIL/TAG
 9" MAPLE N 30° W (M.B.) 40.18' NAIL/TAG
 FOUND 16" HEMLOCK S 64° W (M.B.) 43.85' NAIL/TAG
 CARSONITE MARKER N 42° E 6.60'

Signed by _____
 Surveyor's Michigan License No. P.S. 28423

Date 11-8-99



ACCEPTED BY THE DICKINSON COUNTY SURVEY PEER GROUP AS THE OFFICIAL CORNER UNDER MICHIGAN PUBLIC ACT 74 OF 1970. APPROVED BY MICHIGAN STATE BOARD OF PROFESSIONAL SURVEYORS, JAN. 28, 1971

11-23-99

REVISED MAY 14, 1975
 REVISED JAN., 1983
 REVISED OCT., 1995

Liber 3

PAGE 2

COUNTY REPRESENTATIVE