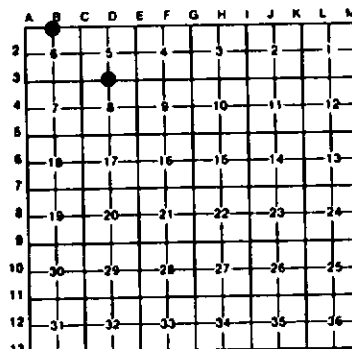


LAND CORNER RECORDATION CERTIFICATE
Filing Requirement of Act 74, Mich. P.A. 1970

For corners in
Dickinson
(County)

Located In:	Corner Code #
1. Public Land Survey T 41N R 29W	03
T 41N R 29W	01
T R	
T R	
2. Property Controlling S T R	
in Section S T R	
3. Miscellaneous S T R	
Property in Sec. S T R	
4. Lot No. _____, Recorded Plat _____	
5. Private Claims _____	

Register of Deeds Stamp & File Number



I, Stephan J. Szyszkoski, in a field survey on 03 August 26, 1992, 19_____, do hereby certify that under requirements of P.A. 74, Michigan P.A. of 1970, the corner points mentioned in lines 1 and 2 above were in conformance with regulations and rules therefore as required in the current manual of survey instructions of the United States Department of the Interior, Bureau of Land Management or by a decree of a Court of Law and/or that the corner points mentioned in lines 3, 4 and 5 above were in conformance with the rules of the Michigan Board of Land Surveyors or by a Decree of a Court of Law, established, re-established, monumented, re-monumented, recovered, found as expressed below:

NOTE: Not more than 4 corners, all in the same town and range, may be recorded on this certificate.

A. Description of original monument and accessories and/or subsequent restoration:

(03) Quarter corner common to Sections 5 and 8, T41N-R29W. Established by U.S. Deputy Surveyor John Burt, 1849, marked by an 8" Cedar. No BTs are noted. Original corner perpetuated by Dean C. DeLaMater in 1951. Record # 106 on file with Dickinson Co. Rd. Commission by DeLaMater, 11/2/51, states "1 inch pipe with 4" Brass cap. 10" Cedar S84E 35 Links, 8" Cedar S40W 20 Links. This corner was pointed out to me by H.S. Peterson, District Forester, of Iron Mountain. Squared tree, original, for corner, still in place, in good condition".

(01) Quarter corner common to Section 6 T41N-R29W and Section 31 T42N-R29W. Established by U.S. Deputy Surveyor Wm.A. Burt, 1849. Original Bts: Sugar 12 N23E 30, Sugar 16 N42W 23. Found no subsequent record.

B. Description of corner evidence found and/or method applied in restoring or reestablishing corner:

(03) Found and accepted a scribed wood post at record bearing and distance from DeLaMater's 2 Cedar bearing trees. Iron pipe monument was not recovered. The wood post was found in the decayed remains of an old cedar stump, the original corner tree. DeLaMater's 01 southeast was found blazed but not scribed. Re-monumented the corner at the location of the scribed wood post.

(01) Original post and Accessories destroyed by construction of Groveland mine. Found no evidence on the ground of original corner location or perpetuation. Reestablished corner by single proportionate measurement to the original record between the monumented township corner 1/2 mile west and a perpetuated original corner 1 1/2 miles east.

C. Description of monument for corner and accessories established to perpetuate locating the position of the corner:

(03) Placed a 1" iron pipe capped with a 4" dia. cast aluminum MDNR tablet. Blazed and scribed the following new bearing trees:
8" Cedar S02E 5.6' (1/4S NBT) placed location poster on this tree.
5" Cedar N56W 14.6' (1/4S NBT)
Remarked the record NBTs:
8" Cedar S40W 13.2' (1/4S NBT)
12" Cedar S84E 22.5' (1/4S NBT)

(01) Placed a 1"x30" iron pipe capped with a 4" dia. cast aluminum MDNR tablet from which bears:
MDNR tag in W.M.P. Co. Power pole NWS847 N39E 65.02'
NW corner of Groveland mine bldg N84E 246.9'
SW corner of same, S86E 253.5'
Placed 1" iron bar, projecting 6", N74W 1.1'
Found a 1" rebar, flagged, N70E 119.36'



Signed by Stephan J. Szyszkoski Date 1-26-93
Surveyor's Michigan License No. 33986