

MAY 07 1997

COMMISSION

RECORDED

LAND CORNER RECORDATION CERTIFICATE 1996 DEC 10 AM 9:59  
Filing Requirement of Act 74, Mich. P.A. 1970

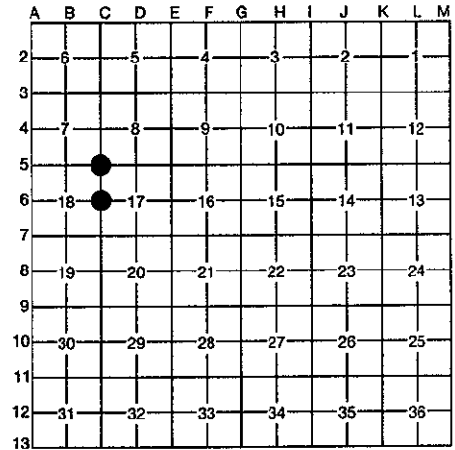
For corners in <u>Dickinson</u> <small>(County)</small>	Located In:	Corner Code #
Sagola Township		
1. Public Land Survey	T 41N R 30W	C-5 ✓
	T 41N R 30W	C-6 ✓
	T _____ R _____	_____
	T _____ R _____	_____
2. Property Controlling in Section	S _____ T _____ R _____	_____
	S _____ T _____ R _____	_____
3. Miscellaneous Property in Section	S _____ T _____ R _____	_____
	S _____ T _____ R _____	_____
4. Lot No. _____, Recorded Plat _____		
5. Private Claims _____		

REGISTER OF DEEDS  
DICKINSON COUNTY  
IRON MOUNTAIN, MI 49801

Register of Deeds Stamp & File Number

I, James H. Moore, in a field survey on 7/23 thru 8/6, 1996, do hereby certify that under requirements of P.A. 74, Michigan P.A. of 1970, the corner points mentioned in lines 1 and 2 above were in conformance with regulations and rules therefore as required in the current manual of survey instructions of the United States Department of the Interior, Bureau of Land Management or by a decree of a Court of Law and/or that the corner points mentioned in lines 3, 4 and 5 above were in conformance with the rules of the Michigan Board of Professional Surveyors or by a Decree of a Court of Law; established, re-established, monumented, re-monumented, recovered, found as expressed below:

**NOTE: Not more than 4 corners, all in the same town and range, may be recorded on this certificate.**



**A. Description of original monument and accessories and/or subsequent restoration:**

- C-5 1849 John Burt, D.S. North, 80 ch. Cedar 18 inches in diameter, corner of Sections 7, 8, 17, & 18.
- C-6 1849 John Burt, D.S. North 40.00 ch. set Cedar quarters section post. Hemlock 12" N 53° W, 25 lks Y Birch 36" S 34° E, 25 lks

ACCEPTED BY THE DICKINSON COUNTY  
SURVEY PEER GROUP AS THE OFFICIAL  
CORNER UNDER MICHIGAN PUBLIC ACT  
345 OF 1990 AT A MEETING HELD ON  
10-9-96

R.A.P.  
COUNTY REPRESENTATIVE

**B. Description of corner evidence found and/or method applied in restoring or reestablishing corner:**

- C-5 I found 2½" solid steel pin as per 1937 Road Commission Map. Corner has 3 bearing trees from recent past. Accepted found monument as corner position.
- C-6 No original evidence found. Old Dickinson Co. Road Commission notes show sketch of West line of Section 17 with dimension of 5155.40' total and show quarter corner at split, 2577.7'. Set corner by single porportion method between Southwest and Northwest section corners, which is at record distance from county records.

**C. Description of monument for corner and accessories established to perpetuate locating the position of the corner:**

- C-5 Replaced 2½" iron pin with Aluminum Dickinson Co. Monument. Referenced as follows:  
Existing Sugar 8" North 15.53' New Black Ash 8" S 60° E, 33.72'  
Existing Sugar 7" S 05° E, 27.89' Existing Balsam 7" S 44° W, 23.61'  
Carsonite Witness Post SE 1.0'
- C-6 Set Aluminum Dickinson County Monument. Referenced as follows:  
Sugar 5" S 64° E, 12.70' Sugar 9" S 20° E, 36.74'  
Sugar 8" S 23° W, 52.66' Balsam 8" N 46° W, 24.24'  
Carsonite Witness Post West 1.65'

Signed by James H. Moore Date 9/10/96  
Surveyor's Michigan License No. \_\_\_\_\_