

RECORDED

LAND CORNER RECORDATION CERTIFICATE
Filing Requirement of Act 74, Mich. P.A. 1970

1998 DEC 14 PM 12: 25

For corners in

<u>Dickinson</u>	Located In:	Corner Code #
(County)		
<u>Sagola Twp.</u>		
1. Public Land Survey	T 41NR 30W	E-3
	T 41NR 30W	E-5
	T R	
	T R	
2. Property Controlling in Section	S T R	
	S T R	
3. Miscellaneous Property in Sec.	S T R	
	S T R	

REGISTER OF DEEDS
DICKINSON COUNTY
RON MORTON, REGISTER

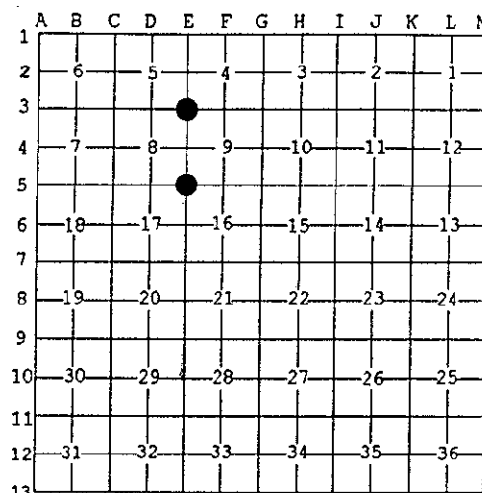
Register of Deeds Stamp & File Number

SECTION

4. Lot No. _____, Recorded Plat _____
5. Private Claims _____

I, Robert F. Perkins, in a field survey on Sept 24, 19 98 do hereby state that under requirements of P.A. 74, Michigan P.A. of 1970, the corner points mentioned in lines 1 and 2 above were in conformance with regulations and rules therefore as required in the current manual of survey instructions of the United States Department of the Interior, Bureau of Land Management or by a decree of a Court of Law and /or that the corner points mentioned in lines 3, 4 and 5 above were in conformance with the rules of the Michigan Board of Land Surveyors or by a Decree of a Court of Law; established, re-established, monumented, recovered, found as expressed below:

NOTE: Not more than 2 corners, all in the same town and range, may be recorded on this certificate.



A. Description of original monument and accessories and/or subsequent restoration:

E-3 Corner Common to Sections 4-5-8-9
Post by John Burt, D.S. 1849
Original Bearing Trees
W. Birch 12" N07°E 13 Lk.
Cedar 24" S41°E 13 Lk.

E-5 Corner Common to Sections 8-9-16-17
Post by John Burt, D.S. 1849
Original bearing Trees
Cedar 12" S36°W 44 Lk.
Spruce 13" N40°E 30 Lk.

B. Description of corner evidence found and/or method applied in restoring or reestablishing corner:

E-3 No Evidence of Original Corner or Accessories Found.
Found 1" Capped Iron Pipe D.N.R. Marker
Set by B. Buckler, RLS in 1966 from G.L.O. BT. Corner Damaged. Found 1 Bearing Tree "Maple 6" N5°E 28 Lk."
Original Report #732.

E-5 No Evidence of Original Corner or Accessories Found.
Found Capped 1" Iron Pipe D.N.R. Monument
Set by B. Buckler, RLS in 1962.
1962 Bearing Trees
Cedar 10" N30°W 06.5 Lk.(Found)
Cedar 6" N62°E 5.0 Lk.(Found)

C. Description of monument for corner and accessories established to perpetuate locating the position of the corner:

E-3 Accepted Iron Pipe Monument described in "B" above. Set 2 1/2" Stamped D.C. Remon. Marker at Corner.
New Witnesses:
Lynn 8" N46°W(M.B.) 24.92' Nail/Tag
Maple 8" N28°W(M.B.) 16.25' Nail/Tag
Maple 4" S49°E(M.B.) 19.20' Nail/Tag
Maple 11" N5°E(M.B.) 18.99' Nail/Tag
Placed Carsonite Marker 1.0' South

E-5 Found and Accepted D.N.R. Marker described in "B" above.
Witnesses:
Cedar 14" N30°W(M.B.) 5.18' Found
Cedar 10" N62°E(M.B.) 4.00' Found
Spruce 8" S72°W(M.B.) 5.91' Nail/Tag
Cedar 10" S15°E(M.B.) 23.90' Nail/Tag
Placed Carsonite Marker 1.0' N.W.

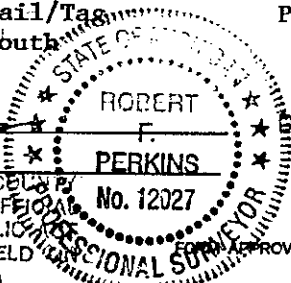
Signed by Robert F. Perkins Date Oct. 28, 1998

Surveyor's Michigan License No. 12027

ACCEPTED BY THE DICKINSON COUNTY SURVEY PEER GROUP AS THE OFFICIAL CORNER UNDER MICHIGAN PUBLIC ACT 74 OF 1980 AT A MEETING HELD

12-7-98

R.F. Perkins



APPROVED BY MICHIGAN STATE BOARD OF PROFESSIONAL SURVEYORS, JAN. 28, 1971
REVISED MAY 14, 1975
REVISED JAN., 1983
REVISED OCT., 1985

15007 Perkins