

LAND CORNER RECORDATION CERTIFICATE
Filing Requirement of Act 74, Mich. P.A. 1970

RECORDED

1998 DEC 14 PM 12: 25

For corners in

Dickinson Located In: Corner Code #
(County)
Sagola Twp.

1. Public Land Survey T 41NR 30W E-4
T R H-5
T R
T R
T R

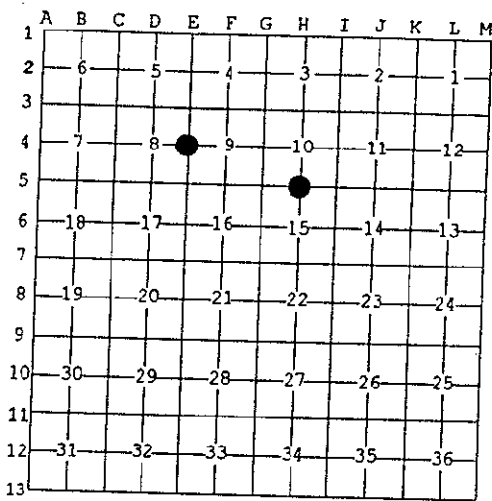
2. Property Controlling S T R
In Section S T R
3. Miscellaneous S T R
Property in Sec. S T R

REGISTER OF DEEDS
MICHIGAN COUNTY

Register of Deeds Stamp & File Number

4. Lot No. _____, Recorded Plat _____
5. Private Claims _____ SECTION _____

I, Robert F. Perkins, in a field survey on Oct. 23, 1998 do hereby state that under requirements of P.A. 74, Michigan P.A. of 1970, the corner points mentioned in lines 1 and 2 above were in conformance with regulations and rules therefore as required in the current manual of survey instructions of the United States Department of the Interior, Bureau of Land Management or by a decree of a Court of Law and /or that the corner points mentioned in lines 3, 4 and 5 above were in conformance with the rules of the Michigan Board of Land Surveyors or by a Decree of a Court of Law; established, re-established, monumented, recovered, found as expressed below:



NOTE: Not more than 2 corners, all in the same town and range, may be recorded on this certificate.

A. Description of original monument and accessories and/or subsequent restoration:

E-4 1/4 Corner Common to Sections 8/9
Post by John Burt, D.S. 1849
Original Bearing Trees
Lynn 20" S62°E 15 Lk.
Hemlock 8" N34°W 23 Lk.

H-5 1/4 Corner Common to Sections 10/15
Post by John Burt, D.S. 1849
Original Bearing Trees
Spruce 12" N20°W 17 Lk.
Spruce 10" S35°E 15 Lk.

B. Description of corner evidence found and/or method applied in restoring or reestablishing corner:

E-4 No Evidence of Original Corner or Accessories Found.
Found 1" Iron Pipe with 4" D.N.R. Brass Cap Set by Billy D. Buckler, RLS in 7-17-1962 (Old Corner Report #734)
1962 Bearing Trees:
Maple 5" N6°W 19 Lk. (Found)
Maple 5" S88°E 36 1/2 Lk. (Found)

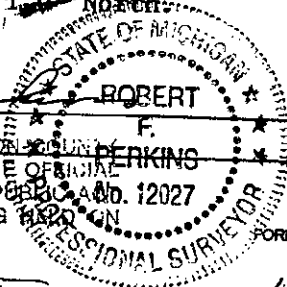
H-5 Found 5/8" x 24" Iron Bar Set in 1977 by the undersigned from 2 Spruce BT Stumps (Badly decayed) at Blazed Line running East.
1977 Bearing Trees:
Cedar 6" N43°E 31.85'
Balsam 5" S53°W 16.90'

C. Description of monument for corner and accessories established to perpetuate locating the position of the corner:

E-4 Found and Accepted Pipe Monument described in "B" above.
New Witnesses:
Sugar Maple 10" N06°W(M.B.) 12.44' Nail/Tag
Sugar Maple 12" N63°W(M.B.) 9.76' Nail/Tag
Sugar Maple 4" S32°W(M.B.) 7.34' Nail/Tag
Sugar Maple 12" S88°E(M.B.) 23.95' Nail/Tag
Placed Carsonite Marker 1.0' North

H-5 Accepted Iron Bar described in "B" above as Best Available Evidence of Corner Location. Replaced Existing Iron Bar with 2 1/2" Stamped D.C. Remon. Corner.
New Witnesses:
Cedar 8" N42°E(M.B.) 31.75' Nail/Tag
Cedar 7" N77°E(M.B.) 37.34' Nail/Tag
Fir 4" S74°W(M.B.) 22.97' Nail/Tag
Spruce 4" S38°E(M.B.) 10.40' Nail/Tag
Placed Carsonite Marker 0.8' East.

Signed by Robert F. Perkins
Surveyor's Michigan License No. 12027
12-7-98
COUNTY REPRESENTATIVE



Date Nov. 20, 1998