

RECORDED

1998 DEC 14 PM 12: 26

LAND CORNER RECORDATION CERTIFICATE  
Filing Requirement of Act 74, Mich. P.A. 1970

For corners in

Dickinson

(County)

Located In:

Corner Code #

1. Public Land Survey

T 41NR 30W

F-3 Sagola Twp.

F-9 Breitung Twp.

T R

T R

T R

2. Property Controlling in Section

S T R

S T R

3. Miscellaneous Property in Sec.

S T R

S T R

4. Lot No. \_\_\_\_\_ Recorded Plat \_\_\_\_\_

5. Private Claims \_\_\_\_\_

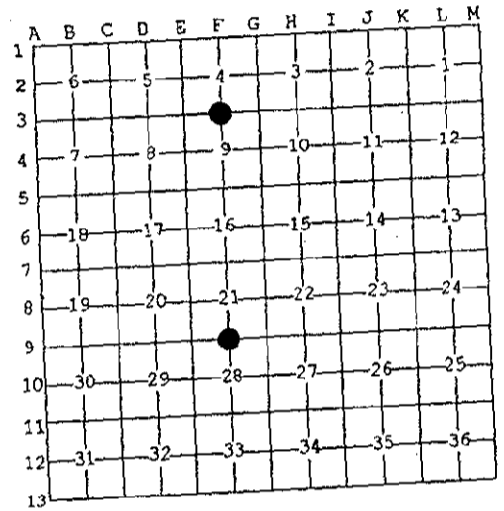
SECTION

REGISTER OF DEEDS  
DICKINSON COUNTY  
IRON MONUMENT

Register of Deeds Stamp & File Number

I, Robert F. Perkins, in a field survey on Sept. 25, 1998 do hereby state that under requirements of P.A. 74, Michigan P.A. of 1970, the corner points mentioned in lines 1 and 2 above were in conformance with regulations and rules therefore as required in the current manual of survey instructions of the United States Department of the Interior, Bureau of Land Management or by a decree of a Court of Law and /or that the corner points mentioned in lines 3, 4 and 5 above were in conformance with the rules of the Michigan Board of Land Surveyors or by a Decree of a Court of Law; established, re-established, monumented, recovered, found as expressed below:

NOTE: Not more than 2 corners, all in the same town and range, may be recorded on this certificate.



A. Description of original monument and accessories and/or subsequent restoration:

F-3 1/4 Corner Common to Sections 4  
Post by John Burt, D.S. 1849  
Original Bearing Trees  
Hemlock 16" N45°E 44 Lk.  
Sugar 12" S11°W 19 Lk.

F-9 1/4 Corner Common to Sections 21  
Post by John Burt, D.S. 1849  
Original Bearing Trees  
Tamarack 8" S8°E 8 Lk.  
Spruce 5" S15°W 25 Lk.

B. Description of corner evidence found and/or method applied in restoring or reestablishing corner:

F-3 No Evidence of Original Corner or its Accessories Found.  
Found 1" D.N.R. Pipe Monument set by B. Buckler, RLS in 1962.  
1962 Bearing Trees:  
Maple 7" N50°W 27 1/2 Lk.  
Elm 6" S29°E 18 Lk.  
Original Report #738

F-9 No Evidence of Original Corner or its Accessories Found.  
Found 1" Solid Iron Bar 2' East of Centerline County Road #607.  
Ancient Fence Line East.  
Corner agrees with Old County Road Plans and has been accepted and used on Prior Surveys in Area.

C. Description of monument for corner and accessories established to perpetuate locating the position of the corner:

F-3 Accepted Iron Pipe Monument described in "B" above.  
New Witnesses:  
Maple 6" S58°W(M.B.) 10.95' Nail/Tag  
Maple 5" N11°W(M.B.) 15.49' Nail/Tag  
Maple 3" S37°E(M.B.) 7.80' Nail/Tag  
Lynn 14" N52°E(M.B.) 17.15' Nail/Tag  
Placed Carsonite Marker 2.0' West.

F-9 Accepted above Iron Bar as Best Available Evidence of Corner Location. Replaced Iron Bar with 2 1/2" Stamped D.C. Remon. Corner in Monument Box.  
New Witnesses:  
W.Pine 7" S10°W(M.B.) 56.69' Nail/Tag  
W.Pine 18" N87°E(M.B.) 65.15' Nail/Tag  
Fir 5" N37°E(M.B.) 74.90' Nail/Tag  
P.Pole #60-272 N27°W(M.B.) 53.69' Nail/Tag  
Placed Carsonite Marker 33.0' East at Fence

Signed by

Robert F. Perkins

ROBERT F. PERKINS

Corner.

Date Oct. 28, 1998

Surveyor's Michigan License No. 12027

THE DICKINSON COUNTY SURVEY PEER GROUP AS THE OFFICIAL CORNER UNDER MICHIGAN P.A. 74, No. 12027

345 OF 1990 AT A MEETING

12-7-98

PROFESSIONAL SURVEYOR

APPROVED BY MICHIGAN STATE BOARD OF PROFESSIONAL SURVEYORS, JAN. 28, 1971  
REVISED MAY 14, 1975  
REVISED JAN., 1983  
REVISED OCT., 1995

Lib 2 Page A12