

**LAND CORNER RECORDATION CERTIFICATE**  
Filing Requirement of Act 74, Mich. P.A. 1970

RECORDED

1978 DEC 14 PM 12: 25

For corners in

Dickinson

Located in:

Corner Code #

(County)  
Sagola Twp.

1. Public Land Survey

T 41NR 30W

G-4

T      R     

G-7

T      R     

T      R     

2. Property Controlling  
in Section

S      T      R     

S      T      R     

3. Miscellaneous  
Property in Sec.

S      T      R     

S      T      R     

SURVEY &  
REMONUMENTATION

MAR 3 1999

REGISTER OF DEEDS  
DICKINSON COUNTY  
RON MOORE, CLERK

Register of Deeds Stamp & File Number

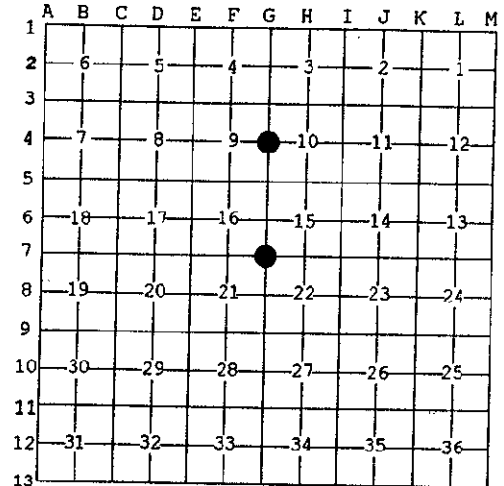
4. Lot No. \_\_\_\_\_, Recorded Plat \_\_\_\_\_

5. Private Claims \_\_\_\_\_

SECTION

I, Robert F. Perkins, in a field survey on Sept. 25, 19 98 do hereby state that under requirements of P.A. 74, Michigan P.A. of 1970, the corner points mentioned in lines 1 and 2 above were in conformance with regulations and rules therefore as required in the current manual of survey instructions of the United States Department of the Interior, Bureau of Land Management or by a decree of a Court of Law and /or that the corner points mentioned in lines 3, 4 and 5 above were in conformance with the rules of the Michigan Board of Land Surveyors or by a Decree of a Court of Law; established, re-established, monumented, recovered, found as expressed below:

NOTE: Not more than 2 corners, all in the same town and range, may be recorded on this certificate.



A. Description of original monument and accessories and/or subsequent restoration:

G-4 ¼ Corner Common to Sections 9/10  
Post by John Burt, D.S. 1849  
Original Bearing Trees  
Cedar 5" S21°W 14 Lk.  
Spruce 8" N32°E 33 Lk.

G-7 Corner Common to Sections 15-16-21-22  
Post by John Burt, D.S. 1849  
Original Bearing Trees  
Sugar 20" N41°E 20 Lk.  
Cedar 10" S34°W 27 Lk.

B. Description of corner evidence found and/or method applied in restoring or reestablishing corner:

G-4 No Evidence of Original Corner  
or its Accessories Found.  
Found 1" Iron Pipe with 4" D.N.R. Cap  
Set by B. Buckler, RLS 7-17-62. at  
Found 3" Iron Pipe.  
1962 Bearing Trees:  
B. Spruce 5" S23°E 18½ Lk.  
B. Spruce 5" S86°W 16 Lk.  
Old Corner Report #733

G-7 No Evidence of Original Corner  
or its Accessories Found.  
Found 1½" Steel Axle as noted on  
Certificate #364 signed by  
James H. Moore, PLS

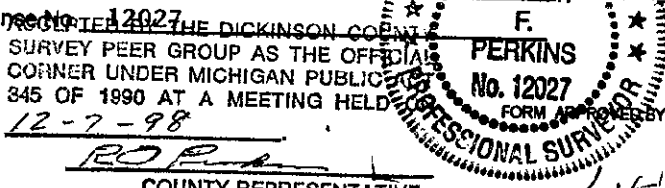
C. Description of monument for corner and accessories established to perpetuate locating the position of the corner:

G-4 Found and Accepted D.N.R. Pipe Monument  
described in "B" above. Also Newer BT's  
evident.  
New Witnesses:  
B. Spruce 4" S02°E(M.B.) 4.15' Nail/Tag  
B. Spruce 4" S86°W(M.B.) 10.55' Nail/Tag  
B. Spruce 5" N37°W(M.B.) 5.10' Nail/Tag  
B. Spruce 7" N34°E(M.B.) 12.10' Nail/Tag  
Placed Carsonite Marker S30°W 1.0'

G-7 Replaced Steel Axle referred to in  
"B" above with 2½" Stamped D.C.  
Remon. Corner.  
New Witnesses:  
Fir 10" N25°W(M.B.) 11.00' Nail/Tag  
Fir 9" S15°W(M.B.) 4.14' Nail/Tag  
Fir 3" S46°E(M.B.) 3.66' Nail/Tag  
Maple 13" N85°W(M.B.) 13.67' Nail/Tag  
Placed Carsonite Marker 1.0' East.

Signed by Robert F. Perkins Date Oct. 28, 1998

Surveyor's Michigan License No. 12027



12-7-98

RO Perkins  
COUNTY REPRESENTATIVE

Liber 2 Page 420

MICHIGAN STATE BOARD OF PROFESSIONAL SURVEYORS, JAN. 28, 1971  
REVISED MAY 14, 1975  
REVISED JAN., 1983  
REVISED OCT., 1985