

RECORDED

1998 DEC 14 PM 12: 26

LAND CORNER RECORDATION CERTIFICATE
Filing Requirement of Act 74, Mich. P.A. 1970

For corners in

Dickinson

(County)

Sagola Twp.

1. Public Land Survey

Located In:

Corner Code #

T 41NR 30W H-3

T R I-3

T R

T R

S T R SECURITY & MONUMENTATION

S T R

S T R

S T R MAR 25 1998

2. Property Controlling in Section

3. Miscellaneous Property in Sec.

4. Lot No. , Recorded Plat SECTION

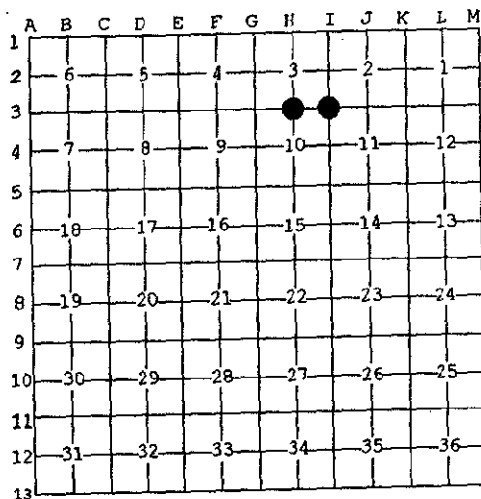
5. Private Claims

REGISTER OF DEEDS
DICKINSON COUNTY
IRON MOUNTAIN MI 49801

Register of Deeds Stamp & File Number

I, Robert F. Perkins, in a field survey on Sept. 24, 1998 do hereby state that under requirements of P.A. 74, Michigan P.A. of 1970, the corner points mentioned in lines 1 and 2 above were in conformance with regulations and rules therefore as required in the current manual of survey instructions of the United States Department of the Interior, Bureau of Land Management or by a decree of a Court of Law and /or that the corner points mentioned in lines 3, 4 and 5 above were in conformance with the rules of the Michigan Board of Land Surveyors or by a Decree of a Court of Law; established, re-established, monumented, recovered, found as expressed below:

NOTE: Not more than 2 corners, all in the same town and range, may be recorded on this certificate.



A. Description of original monument and accessories and/or subsequent restoration:

H-3 1/2 Corner Common to Sections 3 and 10
Post by John Burt, D.S. 1849
Original Bearing Trees
Hemlock 16" S60°W 30 Lk.
Hemlock 10" S30°E 30 Lk.

I-3 Corner Common to Sections 2-3-10-11
Post by John Burt, D.S. 1849
Original Bearing Trees
Sugar 20" N33°W 31 Lk.
W. Birch 10" S48°E 30 Lk.

B. Description of corner evidence found and/or method applied in restoring or reestablishing corner:

H-3 No Evidence of Original Corner or its Accessories Found.
Found 1" Iron Pipe with 4" K.C. Corp. Stamped Cap.
Old Report #813

I-3 Found 1" Iron Pipe with 4" Stamped K.C. Corp. Cap as set by Neal Sperhake, RLS in 1962 from G.L.O. Bearing Tree "Sugar 20" N33°W 37 Lk."
Also found 2 BT's by M.D.O.T.
See Old Corner Report #671

C. Description of monument for corner and accessories established to perpetuate locating the position of the corner:

H-3 Accepted Monument referred to in "B" above.
New Witnesses:
Maple 4" N70°E(M.B.) 24.50' Nail/Tag
Maple 6" N15°W(M.B.) 27.51' Nail/Tag
Maple 6" S68°W(M.B.) 26.35' Nail/Tag
Maple 10" S43°E(M.B.) 12.64' Nail/Tag
Placed Carsonite Marker 1.0' N.W.

I-3 Accepted Monument referred to in "B" above.
New Witnesses:
Maple 10" N15°E(M.B.) 10.95' Nail/Tag
Maple 6" S60°W(M.B.) 10.80' Nail/Tag
Maple 10" N49°W(M.B.) 14.12' Nail/Tag
Maple 12" S50°E(M.B.) 16.00' Nail/Tag
Fence West (Down)
Placed Carsonite Marker N45°E 0.5'

Signed by Robert F. Perkins Date Oct. 28, 1998

Surveyor's Michigan License No. 12027 THE DICKINSON COUNTY SURVEY PEER GROUP AS THE OFFICIAL CORNER UNDER MICHIGAN PUBLIC ACT No. 12027

APPROVED BY MICHIGAN STATE BOARD OF PROFESSIONAL SURVEYORS, JAN. 28, 1971
REVISED MAY 14, 1975
REVISED JAN. 1983
REVISED OCT., 1985
COUNTY REPRESENTATIVE
Liber 2 Page 491