

SURVEY & REMONUMENTATION

MAR 03 1998

LAND CORNER RECORDATION CERTIFICATE  
Filing Requirement of Act 74, Mich. P.A. 1970

RECORDED

1997 OCT -9 AM 8:21

SECTION

For corners in Dickinson  
(County)

Located In:

Corner Code #

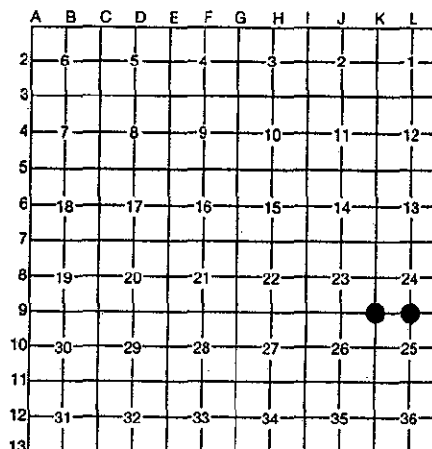
Breitung Twp.

- |                                      |   |            |   |            |            |
|--------------------------------------|---|------------|---|------------|------------|
| 1. Public Land Survey                | T | <u>41N</u> | R | <u>30W</u> | <u>K-9</u> |
|                                      | T | ---        | R | ---        | <u>L-9</u> |
|                                      | T | ---        | R | ---        | ---        |
|                                      | T | ---        | R | ---        | ---        |
| 2. Property Controlling in Section   | S | ---        | T | ---        | ---        |
|                                      | S | ---        | T | ---        | ---        |
| 3. Miscellaneous Property in Section | S | ---        | T | ---        | ---        |
|                                      | S | ---        | T | ---        | ---        |

REGISTER OF DEEDS  
DICKINSON COUNTY  
RON MOORE, CLERK

Register of Deeds Stamp & File Number

4. Lot No. \_\_\_\_\_, Recorded Plat \_\_\_\_\_  
5. Private Claims \_\_\_\_\_



I, R.F. Perkins, in a field survey on Sept. 19, 1997, do hereby certify that under requirements of P.A. 74, Michigan P.A. of 1970, the corner points mentioned in lines 1 and 2 above were in conformance with regulations and rules therefore as required in the current manual of survey instructions of the United States Department of the Interior, Bureau of Land Management or by a decree of a Court of Law and/or that the corner points mentioned in lines 3, 4 and 5 above were in conformance with the rules of the Michigan Board of Professional Surveyors or by a Decree of a Court of Law; established, re-established, monumented, re-monumented, recovered, found as expressed below:

NOTE: Not more than 4 corners, all in the same town and range, may be recorded on this certificate.

A. Description of original monument and accessories and/or subsequent restoration:

K-9 Northwest Corner, Section 25  
Post by John Burt, D.S. 1849  
Original Bearing Trees  
Hemlock 22" S12°W 17 Lks.  
Lynn 16" N88°E 22 Lks.

L-9 North 1/2 Corner, Section 25  
Post by John Burt, D.S. 1849  
Original Bearing Trees  
Sugar 14" N78°E 27 Lks.  
Y. Birch 18" S56°W 50 Lks.

ACCEPTED BY THE DICKINSON COUNTY  
SURVEY PEER GROUP AS THE OFFICIAL  
CORNER UNDER MICHIGAN PUBLIC ACT  
345 OF 1990 AT A MEETING HELD ON  
90-7-97

B. Description of corner evidence found and/or method applied in restoring or reestablishing corner:

R.F.P.  
COUNTY REPRESENTATIVE

K-9 No evidence of Original Corner or Accessories Found.  
Section 25 Subdivided by W.C. Johnson, C.E. D.C.R.C. in 1937. See Map in File A-10, No. 23B for details of Survey.  
Corner Re-established using Johnson's Distances to Section Corner 1 Mile East and 1/2 Corner 1/2 Mile South. Old blue line runs South from this Location

L-9 No evidence of Original Corner or Accessories Found.  
Section 25 Subdivided by W.C. Johnson, C.E., D.C.R.C. in 1937. See Map in File A-10, No. 23B for details of Survey. Corner Re-established at Mid-Point on Line between Northeast and Northwest Corners of Section in harmony with 1937 Survey.

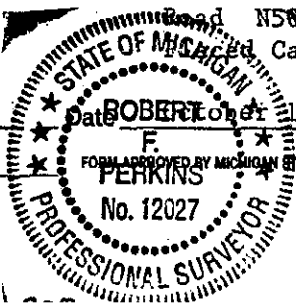
C. Description of monument for corner and accessories established to perpetuate locating the position of the corner:

K-9 Set 2 1/2" Stamped D.C. Remon. Monument.  
New Witnesses  
W.Pine 30" N47°E (M.B.) 45.40'  
R.Maple 8" S37°E (M.B.) 7.05'  
R.Maple 6" N77°W (M.B.) 13.95'  
R.Maple 8" N24°E (M.B.) 21.05'  
Placed Carsonite Marker 1.0' North

L-9 Set 2 1/2" Stamped D.C. Remon. Monument.  
New Witnesses  
Maple 14" N9°E (M.B.) 14.5'  
Ironwood 7" East (M.B.) 18.54'  
S.Maple 6" N45°E (M.B.) 18.84'  
S.Maple 8" S12°W (M.B.) 77.62'  
53' Southeasterly to E Woods  
Placed Carsonite Marker 1.0' North.

Signed by Robert F. Perkins

ROBERT F. PERKINS  
Surveyor's Michigan License No. 12027



Date ROBERT PERKINS, 1997