

MICHIGAN
DEPARTMENT OF CONSERVATION
FORESTRY DIVISION

LAND CORNER RECORD

T. 41N N.R. 30W

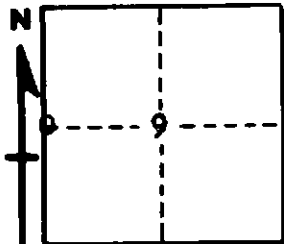
Dickinson COUNTY

DESCRIPTION OF CORNER ¼ Corner between Sections 8-9

CORNER MONUMENT 1" pipe with 4" aluminum cap

DATE MONUMENT PLACED AND WITNESSED 7-17-62

WITNESSES TO CORNER..... 5" Hard Maple (¼S NBT) N 6°W 19 links



5" Hard Maple (¼S NBT) S 88°E 36½ links

AND

CIRCLE CORNER REGISTERED

DESCRIPTION IN DETAIL AS TO HOW CORNER WAS LOCATED AND IDENTIFIED OR RESTORED.

This corner was replaced at old cedar post found by Forestry Division survey crew.
No positive evidence of original corner. Position checks with original corner ½ mile north.

SURVEYOR'S SEAL

SIGNED Billy D. Buckler DATE Feb. 28, 1963
REGISTERED LAND SURVEYOR
Billy D. Buckler