

MICHIGAN  
DEPARTMENT OF CONSERVATION  
FORESTRY DIVISION

# LAND CORNER RECORD

T. 41N N. R. 30W

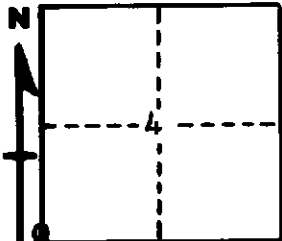
Dickinson COUNTY

DESCRIPTION OF CORNER Sec. corner common to Sections 4-5-8-9

CORNER MONUMENT 1" pipe with 4" aluminum cap.

DATE MONUMENT PLACED AND WITNESSED 7-17-62

WITNESSES TO CORNER..... 12"Y. Birch (S8 NBT) S82°W 13½ links



6" hard maple (S4NBT) N5°E 28 links

7" hard maple (S9NBT) S38°E 30 links

AND

CIRCLE CORNER REGISTERED

DESCRIPTION IN DETAIL AS TO HOW CORNER WAS LOCATED AND IDENTIFIED OR RESTORED.

This corner was replaced at old cedar post with one original B.T. in place, a Y. Birch badly rotted bearing N61° E 13 links.

SURVEYOR'S SEAL

SIGNED Billy D. Buckler DATE January 23, 1963  
REGISTERED LAND SURVEYOR  
Billy D. Buckler