

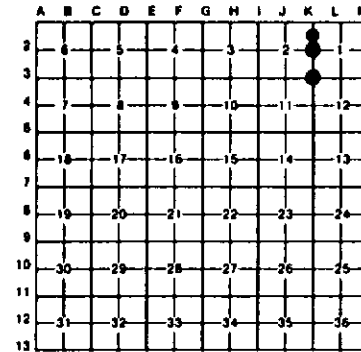
LAND CORNER RECORDATION CERTIFICATE  
Filing Requirement of Act 74, Mich. P.A. 1970

For corners in  
Dickinson

(County)	Located In:	Corner Code #
1. Public Land Survey	T 41N R 30W	E3
	T 41N R 30W	E2
	T _____ R _____	_____
	T _____ R _____	_____
	T _____ R _____	_____
2. Property Controlling in Section	S 1 T 41N R 30W	3
	S _____ T _____ R _____	_____
3. Miscellaneous Property in Sec.	S _____ T _____ R _____	_____
	S _____ T _____ R _____	_____

Register of Deeds Stamp & File Number

4. Lot No. \_\_\_\_\_, Recorded Plat \_\_\_\_\_  
 5. Private Claims \_\_\_\_\_



I, Stephan J. Szyszkoski, in a field survey on November 12, 1992, 19\_\_\_\_\_, do hereby certify that under requirements of P.A. 74, Michigan P.A. of 1970, the corner points mentioned in lines 1 and 2 above were in conformance with regulations and rules therefore as required in the current manual of survey instructions of the United States Department of the Interior, Bureau of Land Management or by a Decree of a Court of Law and/or that the corner points mentioned in lines 3, 4 and 5 above were in conformance with the rules of the Michigan Board of Land Surveyors or by a Decree of a Court of Law, established, re-established, monumented, re-monumented, recovered, found as expressed below:

NOTE: Not more than 4 corners, all in the same town and range, may be recorded on this certificate.

A. Description of original monument and accessories and/or subsequent restoration:

- (E3) Corner common to sections 1-2-11-12 T41N-R30W. Corner established by U.S. Deputy surveyor John Burt, 1849. Original BTs: Cedar 12 N34E 23, Spruce 12 S54W 21. Found no subsequent record.
- (E2) Quarter corner common to sections 1-2, T41N-R30W. Corner established by U.S. Deputy Surveyor John Burt, 1849. Original BT: Spruce 10 N25E 8. Found no subsequent record.
- (3) North 1/16 corner between Sections 1-2 T41N-R30W. Corner not established in the original survey. Found no subsequent record.

B. Description of corner evidence found and/or method applied in restoring or reestablishing corner:

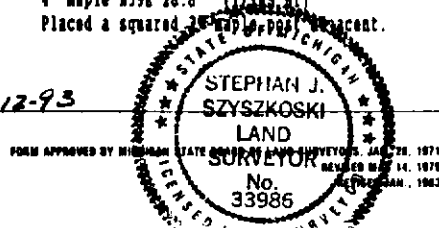
- (E3) Original post and accessories not recovered. Found no evidence of monumentation at the corner. Reestablished the corner by single proportionate measurement to the original record between recorded section corners 1 mile north and 1 mile south. Distance west to an original corner at 13 checks well with the record, distance east to reestablished E3 checks well with the record. Distance east 8.25 ch to "Top of Ledge 75 L. S.W." checks with an ill defined top.
- (E2) Original post and accessories not recovered. Found no evidence of prior monumentation or any other acceptable evidence of the corner on the ground. Reestablished the corner by single proportionate measurement to the original record between recorded corners 2620.19' south and 2546.82' north.
- (3) Found no evidence of prior monumentation. Established corner 20 chains proportionate measure north of the Quarter corner common to Sections 1-2 and on a straight line between said quarter corner and the recorded section corner north, on the township line.

C. Description of monument for corner and accessories established to perpetuate locating the position of the corner:

- |  |   |   |
|--|---|---|
| <p>(E3) Placed a 1"x32" iron pipe capped with a 4" dia. cast aluminum MDRR tablet. Blazed and scribed the following new bearing trees:<br/>         20° W. Pine N18E 21.7' (S1 NBT)<br/>         8° W. Birch N55W 1.3' (S2 NBT)<br/>         20° W. Pine S68E 16.1' (S12 NBT)<br/>         14° W. Pine S43W 32.9' (S11 NBT)<br/>         86E 6.3' squared and scribed a 5" baliseau.</p> | <p>(E2) Placed a 1"x32" iron pipe capped with a 4" dia. cast aluminum MDRR tablet set firm in a mound of stone. Blazed and scribed the following new bearing trees:<br/>         9° Maple N12E 1.3' (1/4S NBT)<br/>         10° Maple S37W 23.2' (1/4S NBT)<br/>         9° Maple N60W 17.4' (1/4S NBT)<br/>         9° Maple S35E 19.0' (1/4S NBT)</p> | <p>(3) Placed a 1"x32" iron pipe capped with a 4" dia. cast aluminum MDRR tablet. Blazed and scribed the following new bearing trees:<br/>         8° Maple N21W 7.6' (1/16S NBT)<br/>         7° Maple S41W 12.4' (1/16S NBT)<br/>         10° Maple S78E 10.7' (1/16S NBT)<br/>         4° Maple N59E 28.8' (1/16S NBT)<br/>         Placed a squared 2" x 2" x 1/2" percent.</p> |
|--|---|---|

Signed by Stephan J. Szyszkoski  
 Surveyor's Michigan License No. 33986

Date 1-12-93



FORM APPROVED BY MICHIGAN STATE BOARD OF LAND SURVEYORS, JAN 29, 1975  
 REVISED MAY 14, 1975  
 (PROCESSED) JAN. 1983