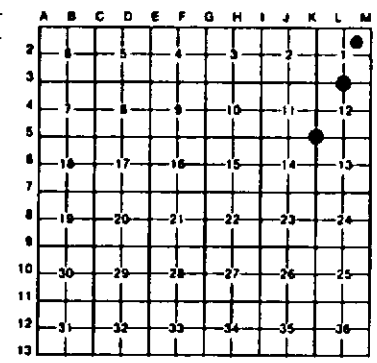


LAND CORNER RECORDATION CERTIFICATE
Filing Requirement of Act 74, Mich. P.A. 1970

For corners in Dickinson (County)	Located in:	Corner Code #/
1. Public Land Survey	T 41N R 30W	E5
	T 42N R 30W	E3
	T _____ R _____	_____
	T _____ R _____	_____
2. Property Controlling in Section	S 1 T 41N R 30W	6
	S _____ T _____ R _____	_____
3. Miscellaneous Property in Sec.	S _____ T _____ R _____	_____
	S _____ T _____ R _____	_____

Register of Deeds Stamp & File Number

4. Lot No. _____, Recorded Plat _____
 5. Private Claims _____



I, Stephan J. Szyszkoski, in a field survey on 6 December 03, 1993, do hereby certify that under requirements of P.A. 74, Michigan P.A. of 1970, the corner points mentioned in lines 1 and 2 above were in conformance with regulations and rules therefore as required in the current manual of survey instructions of the United States Department of the Interior, Bureau of Land Management or by a decree of a Court of Law and/or that the corner points mentioned in lines 3, 4 and 5 above were in conformance with the rules of the Michigan Board of Land Surveyors or by a Decree of a Court of Law, established, re-established, monumented, re-monumented, recovered, found, as expressed below:

NOTE: Not more than 4 corners, all in the same town and range, may be recorded on this certificate.

A. Description of original monument and accessories and/or subsequent restoration:

- (E5) Section corner common to sections 11-12-13-14. Corner previously recorded at Dickinson Co. Ed. Commission, File #125, by Dean C. DeLaHater, 1954 as reestablished by double proportionate measurement, evidently between rock ledge calls in all four cardinal directions. Monument placed was a 1" pipe with a 4" brass cap. No witness trees were marked.
- (E3) Quarter corner common to Sections 1 and 12, T41N-R30W. Corner established by U.S. Deputy Surveyor John Burt, 1849. Original BFs: Hemlock 8 N64E 34, Hemlock 12 S77W 4. Record line calls include 1) West 40.12 ch. Section corner, 2) East 40.12 ch. Section corner, 3) East 3.12 ch. Leave (Water) swamp, 4) East 4.72 ch. Brook S C. S.E. Found no subsequent record.
- (6) Northeast 1/16 corner, Section 1 T41N-R30W. Corner not established in original survey. Found no subsequent record.

B. Description of corner evidence found and/or method applied in restoring or reestablishing corner:

- (E5) Found and accepted a 1" pipe with a 4" brass Michigan Dept. of Conservation cap. Marked new bearing trees as described below.
- (E3) Original post and accessories not recovered. Found no evidence of prior monumentation. Reestablished corner on a straight line between adjacent section corners and at record distance west of the brook. Corner position checks with the record as referenced above: 1) 40.027 ch meas., 2) 42.850 ch meas., 3) Checks good to a well defined swamp edge, 4) checks good to a meandering brook, 5, course S.E.
- (6) Established the corner at the computed intersection of straight lines connecting opposite 1/16 corners. 1/16 corners 1341.05' east and 1341.12' west are monumented. 1/16 corners north and south were computed and not monumented. From the corner position thus determined, I found a 1" drill rod 49.5' east and 1.0' south.

C. Description of monument for corner and accessories established to perpetuate locating the position of the corner:

- | | | |
|---|--|--|
| (E5) Found 1" pipe with 4" brass cap.
12" Maple S07W 60.3' (S14 NBT)
4" Balsam S50W 45.5' (S14 NBT)
4" Maple S64W 34.5' (S14 NBT)
Placed squared 4" maple post N50E 1.0'. | (E3) Placed a 1"x32" iron pipe capped with a 4" dia. cast aluminum NDBR tablet. Blazed and scribed the following new bearing trees:
18" W. Pine S51E 20.3' (1/4S NBT)
7" Sugar S15W 24.2' (1/4S NBT)
6" Maple N16E 37.4' (1/4S NBT)
3" Sugar N59W 13.6' On slope (1/4S NBT)
N23E 3' squared 3" maple. | (6) Placed a 1"x32" iron pipe capped with a 4" dia. cast aluminum NDBR tablet. Blazed and scribed the following new bearing trees:
5" Sugar S21W 23.2' (1/16S BT)
7" Sugar S87E 11.8' (1/16S BT)
6" Sugar N43E 20.9' (1/16S BT)
8" Sugar N63W 40.7' (1/16S BT) |
|---|--|--|

Signed by Stephan J. Szyszkoski Date 1-12-93
 Surveyor's Michigan License No. 33986

