

**LAND CORNER RECORDATION CERTIFICATE**  
**Filing Requirement of Act 74, Mich. P.A. 1970**

For corners in

Dickinson  
 (County)

Located In:

Corner Code #

- |                                    |   |             |
|------------------------------------|---|-------------|
| 1. Public Land Survey              | T <u>41N</u> R <u>30W</u>                 | <u>J5</u>   |
|                                    | T <u>41N</u> R <u>30W</u>                 | <u>J8</u>   |
| 2. Property Controlling in Section | T <u>    </u> R <u>    </u>               | <u>    </u> |
|                                    | T <u>    </u> R <u>    </u>               | <u>    </u> |
|                                    | S <u>    </u> T <u>    </u> R <u>    </u> | <u>    </u> |
| 3. Miscellaneous Property in Sec.  | S <u>    </u> T <u>    </u> R <u>    </u> | <u>    </u> |
|                                    | S <u>    </u> T <u>    </u> R <u>    </u> | <u>    </u> |
|                                    | S <u>    </u> T <u>    </u> R <u>    </u> | <u>    </u> |

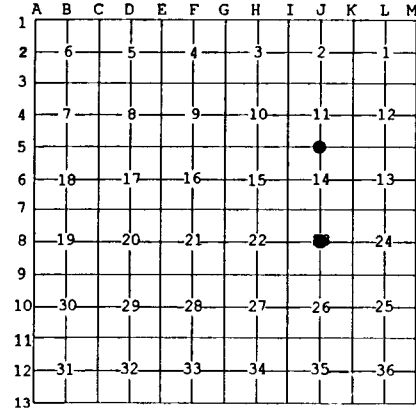
Register of Deeds Stamp & File Number

4. Lot No. \_\_\_\_\_, Recorded Plat \_\_\_\_\_  
 5. Private Claims \_\_\_\_\_

J8 Jun 21 2000  
 J5 Jun 12 2000

I, Stephan J. Szyszkoski, in a field survey on \_\_\_\_\_, 19\_\_\_\_ do hereby state that under requirements of P.A. 74, Michigan P.A. of 1970, the corner points mentioned in lines 1 and 2 above were in conformance with regulations and rules therefore as required in the current manual of survey instructions of the United States Department of the Interior, Bureau of Land Management or by a decree of a Court of Law and/or that the corner points mentioned in lines 3, 4 and 5 above were in conformance with the rules of the Michigan Board of Land Surveyors or by a Decree of a Court of Law; established, re-established, monumented, recovered, found as expressed below:

NOTE: Not more than 2 corners, all in the same town and range, may be recorded on this certificate.



- A. Description of original monument and accessories and/or subsequent restoration:  
 (J5) Quarter corner common to Sections 14-23. Established in 1849 by John Burt. "West corrected btwn 11 and 14...40.10 Set Tank 1/4 post. Spruce 6 N54E 29, Tank 8 S25W 37...80.20 Sec. cor." Found no subsequent record.  
 (J8) Center of Section 23. Corner not established in the original survey.

B. Description of corner evidence found and/or method applied in restoring or reestablishing corner:

- (J5) Original post and accessories were not recovered. Reestablished the corner midway and on a line of mean true bearing between Section corners 2657.93' (40.272 ch.) east and west. At the position for the corner I placed a 1" ID x 32" iron pipe capped with a 4" dia. cast aluminum MDNR tablet, appropriately stamped.  
 (J8) Established the corner at the intersection of straight lines connecting opposite 1/4 corners and monumented same with a 1" ID x 32" iron pipe capped with a 4" dia. cast aluminum MDNR tablet, appropriately stamped. From the monument, an old N-S fence is 27.5' west.

C. Description of monument for corner and accessories established to perpetuate locating the position of the corner:

- |   |   |
|---|---|
| (J5) Set 1" pipe with 4" MDNR cap.<br>Blazed and scribed the following: | (J8) Set 1" pipe with 4" MDNR cap.<br>Blazed and scribed the following: |
| 6" Cedar N10E 30.7'      "1/4S NBT"                                     | 7" Sugar N87E 19.0'      "C1/4 BT"                                      |
| 8" Cedar S82E 11.0'      do   | 5" Ironwood S37E 6.3'      do   |
| 6" Cedar S07E 28.4'      do   | 11" Sugar S05W 19.2'      do  |
| 8" Cedar N58W 5.5'      do  | 9" Sugar N83W 23.8'      do   |
- Set squared cedar post adjacent.      Bearings are magnetic. Distances to notch in lower blaze.



Signed by Stephan J. Szyszkoski Date 8/22/00  
 Surveyor's Michigan License No. 33986

For the Michigan Department of Natural Resources - Forest Management Division