

LAND CORNER RECORDATION CERTIFICATE
Filing Requirement of Act 74, Mich. P.A. 1970

RECORDED

1999 SEP 20 PM 12:55

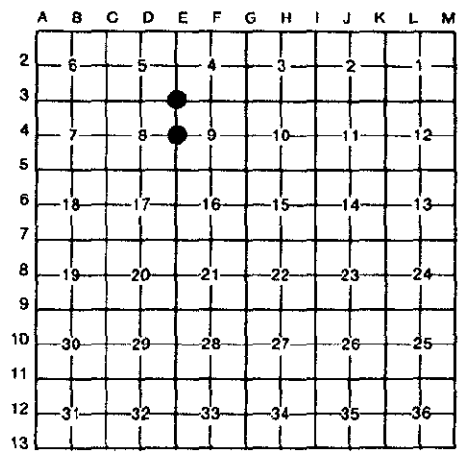
For corners in

Dickinson Located In: Corner Code #
 (County)
 Felch Twsp.
 1. Public Land Survey T 42N R 28W E-3 & E-4
 T _____ R _____
 T _____ R _____
 T _____ R _____
 2. Property Controlling S _____ T _____ R _____
 in Section S _____ T _____ R _____
 3. Miscellaneous S _____ T _____ R _____
 Property in Sec. S _____ T _____ R _____

REGISTER OF DEEDS
 DICKINSON COUNTY
 RON MOORE, CLERK

Register of Deeds Stamp & File Number

4. Lot No. _____, Recorded Plat _____ SECTION _____
 5. Private Claims _____



I, Edward Kazianka, in a field survey on June 24, 19 99, do hereby certify that under requirements of P.A. 74, Michigan P.A. of 1970, the corner points mentioned in lines 1 and 2 above were in conformance with regulations and rules therefore as required in the current manual of survey instructions of the United States Department of the Interior, Bureau of Land Management or by a decree of a Court of Law and/or that the corner points mentioned in lines 3, 4 and 5 above were in conformance with the rules of the Michigan Board of Land Surveyors or by a Decree of a Court of Law; established, re-established, monumented, re-monumented, recovered, found as expressed below:

NOTE: Not more than 4 corners, all in the same town and range, may be recorded on this certificate.

A. Description of original monument and accessories and/or subsequent restoration:

- E-3 Corner common to Sections 4, 5, 8, & 9.
 Post by E.E. Martin in July, 1850.
 Tamarack 12 S31W 10 lks. Cedar 8 N22E 12 lks.
- E-4 East 1/4 Corner of Section 8.
 Post by E.E. Martin in July, 1850.
 Ironwood 8 S50E 41 lks. Sugar 10 N46E 28 lks.

B. Description of corner evidence found and/or method applied in restoring or reestablishing corner:

- E-3 Found D.N.R. pipe and cap monument. Could not find a corner report for this corner although it is use to set other recorded corners to east, west, and north of it.
- E-4 No evidence of the original corner or accessories found. Set the 1/4 corner by single proportionate measurement at the mid-point and on line between the section corners 1/2 mile to the north and south of it.

ACCEPTED BY THE DICKINSON COUNTY
 SURVEY PEER GROUP AS THE OFFICIAL
 CORNER UNDER MICHIGAN PUBLIC ACT
 345 OF 1990 AT A MEETING HELD ON
9-15-99
R. J. Bohm
 COUNTY REPRESENTATIVE

C. Description of monument for corner and accessories established to perpetuate locating the position of the corner:

- E-3 Accepted D.N.R. monument and marked new witnesses.
 Ironwood 5 North 10.95 ft. Maple 11 N68E 20.50 ft.
 Maple 8 S37E 5.60 ft. Maple 6 S80W 16.35 ft.
 Carsonite Stake N45E 3.0 ft.
- E-4 Set stamped 2 1/2" D.C. Remon. Corner.
 New witnesses.
 Cedar 9 S11E 28.02 ft. Cedar 7 S18W 14.55 ft.
 Cedar 9 N72W 13.95 ft. Hemlock 7 N27E 25.22 ft.
 Carsonite Stake S45E 3.0 ft.



Signed by Edward Kazianka Date September 8, 1999
 Surveyor's Michigan License No. 14765

Suber 2 Page 463