

MICHIGAN
DEPARTMENT OF CONSERVATION
FORESTRY DIVISION

LAND CORNER RECORD

T. 42N N.R. 28W

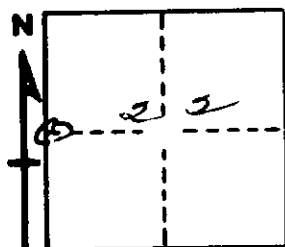
Dickinson COUNTY

DESCRIPTION OF CORNER 1/2 cor. for secs. 21-22

CORNER MONUMENT 1" iron pipe with 4" aluminum cap.

DATE MONUMENT PLACED AND WITNESSED 11/8/66

WITNESSES TO CORNER..... 9" Cedar (1/2S)(NBT) N07°W, 06 lks.



8" Cedar (1/2S)(NBT) S50°E, 17 1/2 lks.

AND

CIRCLE CORNER REGISTERED

DESCRIPTION IN DETAIL AS TO HOW CORNER WAS LOCATED AND IDENTIFIED OR RESTORED.

This corner was placed midway and on line bet. sec. cors. 1/2 mile to north and to south.

SURVEYOR'S SEAL

SIGNED F. J. Bray DATE 1/16/67
F. J. Bray
REGISTERED LAND SURVEYOR