

MICHIGAN
DEPARTMENT OF CONSERVATION
FORESTRY DIVISION

LAND CORNER RECORD

T. 42N N.R. 28W

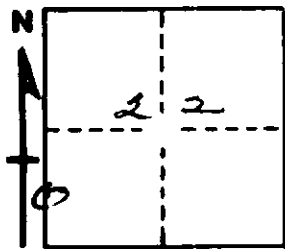
Dickinson COUNTY

DESCRIPTION OF CORNER S 1/16 cor. for secs. 21-22

CORNER MONUMENT 1" iron pipe with 4" aluminum cap.

DATE MONUMENT PLACED AND WITNESSED 11/8/66

WITNESSES TO CORNER..... 12" Cedar (S 1/16)(BT) N67°E, 25 lks.



10" Cedar (S 1/16)(BT) S32°W, 42 lks.

AND

CIRCLE CORNER REGISTERED

DESCRIPTION IN DETAIL AS TO HOW CORNER WAS LOCATED AND IDENTIFIED OR RESTORED.

This corner was placed midway and on line bet. sec. cor. to south and $\frac{1}{4}$ cor. to north.

SURVEYOR'S SEAL

SIGNED F. J. Bray
F. J. Bray
REGISTERED LAND SURVEYOR

DATE 1/16/67