

MICHIGAN  
DEPARTMENT OF CONSERVATION  
FORESTRY DIVISION

# LAND CORNER RECORD

T. 42N R. 27&28W

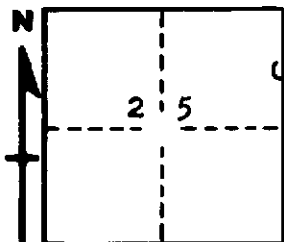
Dickinson COUNTY

DESCRIPTION OF CORNER N1/8 between sections 25, T42N, R28W and 30, T42N, R27W

CORNER MONUMENT 3/8" reinforcing rod and wood post

DATE MONUMENT PLACED AND WITNESSED 9/26/62

WITNESSES TO CORNER..... 8" Cedar (BT) S20°W, 05 links



8" Cedar (BT) N38°E, 08 links

AND

CIRCLE CORNER REGISTERED

DESCRIPTION IN DETAIL AS TO HOW CORNER WAS LOCATED AND IDENTIFIED OR RESTORED.

This corner was placed midway and on line between 1/4 corner to south and section corner to north. Found old post down about 20 feet northeast.

SURVEYOR'S SEAL

SIGNED Billy D. Buckler DATE Jan. 16, 1963  
REGISTERED LAND SURVEYOR  
Billy D. Buckler