

STATE OF MICHIGAN
DEPARTMENT
OF
NATURAL RESOURCES

LAND CORNER RECORD

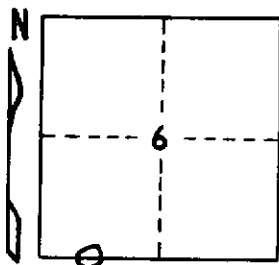
Dickinson COUNTY
T 42 N R 28 W

DESCRIPTION OF CORNER West 1/16 corner between Sections 6 and 7

CORNER MONUMENT 1" I.D. x 36" iron pipe with 4" aluminum cap

DATE MONUMENT PLACED AND WITNESSED January 13, 1970

WITNESSES TO CORNER..... Sugar Maple 5 S78°W (mag.) 30½ lks. "1/16S, BT"



Red Maple 5 S66°E (mag.) 38½ lks. "1/16S, BT"

AND

CIRCLE CORNER REGISTERED

DESCRIPTION IN DETAIL AS TO HOW CORNER WAS LOCATED AND IDENTIFIED OR RESTORED.

No evidence that the corner had been established previously.

Corner established proportionately on line between 1/4 corner 1300.6 ft. east and section corner 1261.5 ft. west.

SURVEYOR'S SEAL

DISTRIBUTION:

SIGNED

Arthur O. Enger
REGISTERED LAND SURVEYOR
Arthur O. Enger

DATE

December 20, 1971

County Courthouse
Area Forester (Regions I & II)
District or Region Surveyor
Forestry Div., Lansing

R 4047
Rev. 10/68