

STATE OF MICHIGAN
DEPARTMENT
OF
NATURAL RESOURCES

LAND CORNER RECORD

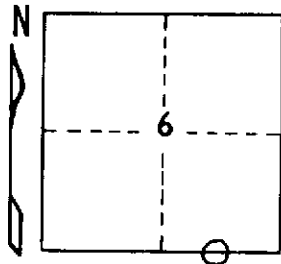
Dickinson COUNTY
T 42N R 28W

DESCRIPTION OF CORNER East 1/16 corner between Sections 6 and 7

CORNER MONUMENT 1" I.D. x 36" iron pipe with 4" aluminum cap.

DATE MONUMENT PLACED AND WITNESSED April 1, 1970

WITNESSES TO CORNER..... No trees or other objects nearby for witnesses.



AND

CIRCLE CORNER REGISTERED

DESCRIPTION IN DETAIL AS TO HOW CORNER WAS LOCATED AND IDENTIFIED OR RESTORED.

Not established in original survey.

Corner falls at approximate intersection of old fences going N, S. and E, indicating probable prior establishment.

Corner established on line between Section corner 1327.9 ft. east and 1/4 corner 1327.9 ft. west.

SURVEYOR'S SEAL

DISTRIBUTION:

SIGNED

Arthur O. Enger
REGISTERED LAND SURVEYOR
Arthur O. Enger

DATE

December 20, 1971

County Courthouse
Area Forester (Regions I & II)
District or Region Surveyor
Forestry Div., Lansing

R 4047
Rev. 10/68