

MICHIGAN
DEPARTMENT OF CONSERVATION
FORESTRY DIVISION



LAND CORNER RECORD

T. 42N N.R. 28W

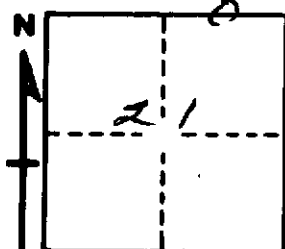
Dickinson COUNTY

DESCRIPTION OF CORNER E 1/16 cor. for secs. 16-21

CORNER MONUMENT 1" iron pipe with 4" aluminum cap.

DATE MONUMENT PLACED AND WITNESSED 8/25/66

WITNESSES TO CORNER..... 10" Cedar (E 1/16)(BT) N61°E, 14 lks.



12" Cedar (E 1/16)(BT) S22°E, 35 lks.

AND

CIRCLE CORNER REGISTERED

DESCRIPTION IN DETAIL AS TO HOW CORNER WAS LOCATED AND IDENTIFIED OR RESTORED.

This corner was midway and on line bet. $\frac{1}{4}$ cor. to west and sec. cor. to east.

SURVEYOR'S SEAL

SIGNED F. J. Bray DATE 1/11/67
F. J. Bray
REGISTERED LAND SURVEYOR