

MICHIGAN
DEPARTMENT OF CONSERVATION
FORESTRY DIVISION

LAND CORNER RECORD

T. 42N N.R. 28W

Dickinson COUNTY

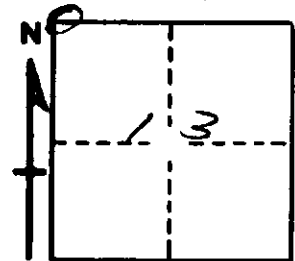
DESCRIPTION OF CORNER Sec. cor. for secs. 11-12-13-14

CORNER MONUMENT 1" iron pipe with 4" aluminum cap.

DATE MONUMENT PLACED AND WITNESSED 9/28/66

WITNESSES TO CORNER..... 12" Cedar (S14)(NBT) S 60°W, 66 lks.

16" Hemlock (S12)(NBT) N60°E, 45 lks.



AND

CIRCLE CORNER REGISTERED

DESCRIPTION IN DETAIL AS TO HOW CORNER WAS LOCATED AND IDENTIFIED OR RESTORED.

This corner was re-established by double proportioned measurement to sec. cors. 1 mile to east and west 2 miles to south and stream to north. Blazed trees in vicinity.

SURVEYOR'S SEAL

SIGNED F. J. Bray DATE 1/13/67
REGISTERED LAND SURVEYOR