

MICHIGAN  
DEPARTMENT OF CONSERVATION  
FORESTRY DIVISION

LAND CORNER RECORD

T. 42N N.R. 28W

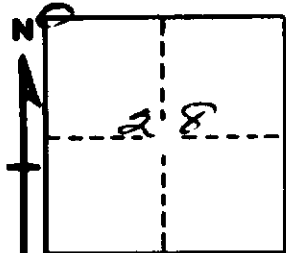
Dickinson COUNTY

DESCRIPTION OF CORNER Sec. cor. for Secs. 20-21-29-28

CORNER MONUMENT 1" iron pipe with 4" aluminum cap.

DATE MONUMENT PLACED AND WITNESSED 10/31/66

WITNESSES TO CORNER..... 48" W. pine stump (NBT) N37°E, 269 lks.



32" W. pine stump (NBT) S47°E, 303 lks.

AND

CIRCLE CORNER REGISTERED

DESCRIPTION IN DETAIL AS TO HOW CORNER WAS LOCATED AND IDENTIFIED OR RESTORED.

This corner was placed in E-W fence line. Foot of hills to east and south at top of hill to west were used to re-establish corner. Stream to east checks fairly well although course may have changed as terrain is flat in stream area.

SURVEYOR'S SEAL

SIGNED F. J. Bray DATE 1/16/67  
F. J. Bray  
REGISTERED LAND SURVEYOR