

MICHIGAN
DEPARTMENT OF CONSERVATION
FORESTRY DIVISION

LAND CORNER RECORD

T. 42N N.R. 28W

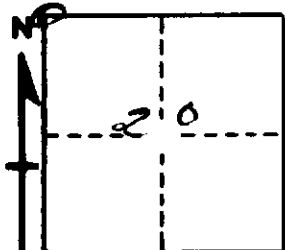
Dickinson COUNTY

DESCRIPTION OF CORNER Sec. cor. for secs. 17-18-19-20

CORNER MONUMENT 1½" iron pipe with 2" iron cap. stamped T42N, secs. 17-18-19-20, R28W

DATE MONUMENT PLACED AND WITNESSED 10/31/66

WITNESSES TO CORNER..... 5" B. Ash (NBT) N30°E, 16½ lks.



14" Cedar (S20)(NBT) S63°E, 37½ lks.

AND

CIRCLE CORNER REGISTERED

DESCRIPTION IN DETAIL AS TO HOW CORNER WAS LOCATED AND IDENTIFIED OR RESTORED.

This corner was set by unknown party and was rewitnessed. Blazes on stump and trees in vicinity. Cedar stump to SE has evidence of overgrowth and may be original BT. Bearing and distance are good.

SURVEYOR'S SEAL

SIGNED F. J. Bray DATE 1/16/67
F. J. Bray
REGISTERED LAND SURVEYOR