

MICHIGAN
DEPARTMENT OF CONSERVATION
FORESTRY DIVISION

LAND CORNER RECORD

T. 42N N.R. 28W

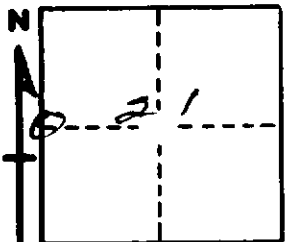
Dickinson COUNTY

DESCRIPTION OF CORNER $\frac{1}{2}$ cor. for secs. 20-21

CORNER MONUMENT 1" iron pipe with 4" aluminum cap.

DATE MONUMENT PLACED AND WITNESSED 11/1/66

WITNESSES TO CORNER..... 5" B. Spruce ($\frac{1}{2}$ S)(NBT) S80°E, 04 lks.



5" W. Birch ($\frac{1}{2}$ S)(NBT) N48°W, 21 $\frac{1}{2}$ lks.

AND _____

DESCRIPTION IN DETAIL AS TO HOW CORNER WAS LOCATED AND IDENTIFIED OR RESTORED.

This corner was placed midway and on line bet. sec. cors. $\frac{1}{2}$ mile to north and to south.

SURVEYOR'S SEAL

SIGNED F. J. Bray DATE 1/16/67
REGISTERED LAND SURVEYOR