

LAND CORNER RECORDATION CERTIFICATE  
Filing Requirement of Act 74, Mich. P.A. 1970

For corners in Dickinson County

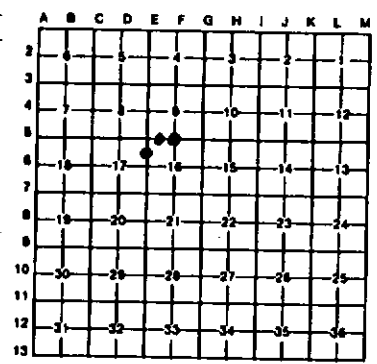
Located In:	Corner Code #
1. Public Land Survey T 42N R 28W	F5
T R	
T R	
T R	
2. Property Controlling in Section S 16 T 42N R 28W	1
S 16 T 42N R 28W	3
S T R	
S T R	

Register of Deeds Stamp & File Number

4. Lot No. \_\_\_\_\_, Recorded Plat \_\_\_\_\_  
 5. Private Claims \_\_\_\_\_

I, Stephen J. Szyzaski, in a field survey on November 23, 1992, 19\_\_\_\_, do hereby certify that under requirements of P.A. 74, Michigan P.A. of 1970, the corner points mentioned in lines 1 and 2 above were in conformance with regulations and rules therefore as required in the current manual of survey instructions of the United States Department of the Interior, Bureau of Land Management or by a decree of a Court of Law and/or that the corner points mentioned in lines 3, 4 and 5 above were in conformance with the rules of the Michigan Board of Land Surveyors or by a Decree of a Court of Law; established, re-established, monumented, re-monumented, recovered, found as expressed below:

NOTE: Not more than 4 corners, all in the same town and range, may be recorded on this certificate.



A. Description of original monument and accessories and/or subsequent restoration:

- (F5) Quarter corner common to Sections 9-16. Corner previously recorded by Frank J. Bray RLS, in 1967 as monumented by a 1" iron pipe with a 4" aluminum cap and the following NBTs: 6" W. Birch (1/4S) (NBT) N86W 25 links, 6" Aspen (1/4S) (NBT) S35W 35 links. Found no subsequent record.
- (1) West 1/16 corner between sections 16-9. Corner previously recorded by Frank J. Bray RLS, in 1967 as monumented by a 1" iron pipe with 4" aluminum cap and the following witnesses: 6" aspen (N1/16) (BT) N39E 07.5 links, 20" W. Pine (BT) S04E 141 links. Found no subsequent record.
- (3) North 1/16 corner between sections 16-17. Corner previously recorded by Frank J. Bray RLS, in 1967 as monumented by 1" iron pipe with 4" aluminum cap and the following witness: 16 W. Pine (BT) N63. 40 links. Bray also notes "This corner was placed at old fence corner which checks well with being on line and midway between 1/4 cor to south and sec. cor. to north".

B. Description of corner evidence found and/or method applied in restoring or reestablishing corner:

- (F5) Found monument as described above. The 1967 BTs were not recovered. Marked four new bearing trees as described below.
- (1) Found monument as described above. Corner falls in clearcut area. Previous bearing trees not recovered. Marked four new bearing trees as described below.
- (3) Record monument was not recovered. Found dead 16" W. Pine with BT blaze N63N, 40 links from, and facing, the remains of an old fence corner. Placed new monument, a 1" IDx32" iron pipe capped with a 4" dia. cast aluminum MDNR tablet, at record bearing and distance from the W. Pine and in the fence corner. Marked four new witness trees as described below.

C. Description of monument for corner and accessories established to perpetuate locating the position of the corner:

- |   |   |  |
|---|---|--|
| (F5) Found 1" pipe with 4" cap.<br>Blazed and scribed the following new bearing trees:<br>3" spruce S19E 11.3" "1/4S NBT"<br>12" spruce S01W 36.6" "1/4S NBT"<br>6" spruce N05E 54.6" "1/4S NBT"<br>4" balsam N82W 30.8" "1/4S NBT" | (1) Found 1" pipe with 4" aluminum cap.<br>10" spruce N29W 19.6" "1/16S BT"<br>7" balsam S50W 11.7" "1/16S BT"<br>5" balsam S45E 29.6" "1/16S BT"<br>12" spruce N15E 49.2" "1/16S BT" | (3) Set 1" pipe with 4" MDNR cap.<br>Blazed and scribed the following new bearing trees:<br>8" Cedar N48W 37.6" "1/16S BT"<br>20" W. Pine N20W 32.0" "1/16S BT"<br>3" Sugar S87W 8.8" "1/16S BT"<br>5" Sugar N82E 45.0" "1/16S BT" |
|---|---|--|

Signed by Stephen J. Szyzaski Date 3-23-93  
 Surveyor's Michigan License No. 33986