

LAND CORNER RECORDATION CERTIFICATE
Filing Requirement of Act 74, Mich. P.A. 1970

For corners in
Dickinson

| | Located In: | Corner Code --# |
|------------------------------------|------------------|-----------------|
| 1. Public Land Survey | T 42N R 28W | A4 |
| | T R | |
| | T R | |
| | T R | |
| 2. Property Controlling in Section | S 19 T 42N R 28W | 3 |
| | S T R | |
| 3. Miscellaneous Property in Sec. | S T R | |
| | S T R | |

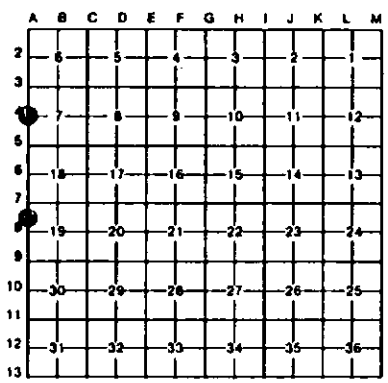
Register of Deeds Stamp & File Number

- 4. Lot No. _____, Recorded Plat _____
- 5. Private Claims _____

A4 November 09, 1994

I, Stephan J. Szyszkoski, in a field survey on 3 November 08, 1994, 19_____, do hereby certify that under requirements of P.A. 74, Michigan P.A. of 1970, the corner points mentioned in lines 1 and 2 above were in conformance with regulations and rules therefore as required in the current manual of survey instructions of the United States Department of the Interior, Bureau of Land Management or by a decree of a Court of Law and/or that the corner points mentioned in lines 3, 4 and 5 above were in conformance with the rules of the Michigan Board of Land Surveyors or by a Decree of a Court of Law, established, re-established, monumented, re-monumented, recovered, found as expressed below:

NOTE: Not more than 4 corners, all in the same town and range, may be recorded on this certificate.



A. Description of original monument and accessories and/or subsequent restoration:

(A4) Quarter corner common to Section 7 T42N-R28W and Section 12 T42N-R29W. Corner established in 1846 by John and Austin Burt as follows: "40.00 Set post qr. Section Corner. Fir 5 S43N 25. N. Birch ?? N13W 32." Found no subsequent record.
 (3-Sec. 19) North 1/16 corner between Sec. 19 T42N-R28W and Section 24, T42N-R29W. Corner not established in the original survey. Found no subsequent record.

B. Description of corner evidence found and/or method applied in restoring or reestablishing corner:

(A4) Original post and accessories were not recovered. Found no evidence of the position of the original corner on the ground. Found no evidence of subsequent monumentation. Reestablished the corner by proportionate measurement to the original record, on a straight line between Section corners 2641.03' north and south. The ledge calls found in the original record on this line check very well, as they do over most of the range line between R28W-R29W in this township. At the position for the corner, I placed a 1" I.D. x 32" iron pipe capped with a 4" dia. cast aluminum MDNR tablet, appropriately stamped. The cap is stamped with the date 10-25-94. The corner falls on the west side of a 14" Aspen. I drove the monument so that it projects 2 ft. and made it firm with a mound of rock. Squared and girdled the Aspen.
 (3-Sec. 19) Found no evidence of prior monumentation at the corner position. Established the corner midway and on a straight line between Section corner 1320.52 ft. north and quarter corner 1320.52 ft. south. At the position for the corner, I placed a 1" I.D. x 32" iron pipe capped with a 4" dia. cast aluminum MDNR tablet, appropriately stamped.

C. Description of monument for corner and accessories established to perpetuate locating the position of the corner:

| | |
|---|--|
| (A4) Set a 1" iron pipe with 4" MDNR cap. Blazed and scribed the following witnesses: | (3) Set a 1" iron pipe with 4" MDNR cap. Blazed and scribed the following witnesses: |
| 3" Maple N23W 28.9' "1/4S NBT" | 7" Cedar S48W 45.1' "1/16S 8T" |
| 10" Maple N58E 21.5' "1/4S NBT" | 7" Cedar N78W 39.9' "1/16S 8T" |
| 15" W. Pine N39E 59.9' "1/4S NBT" | 8" Cedar N39E 27.8' "1/16S 8T" |
| 9" Basswood S33E 73.4' "1/4S NBT" | 8" Cedar S33E 25.9' "1/16S 8T" |
| 5" Cedar S17W 70.0' "1/4S NBT" | Placed a 3" squared cedar post adjacent. |
| 5" Maple S31W 22.7' "1/4S NBT" | Bearings are magnetic. |



Signed by Stephan J. Szyszkoski Date 2-22-95
 Surveyor's Michigan License No. 33986