

LAND CORNER RECORDATION CERTIFICATE  
Filing Requirement of Act 74, Mich. P.A. 1970

For corners in  
Dickinson  
(County)

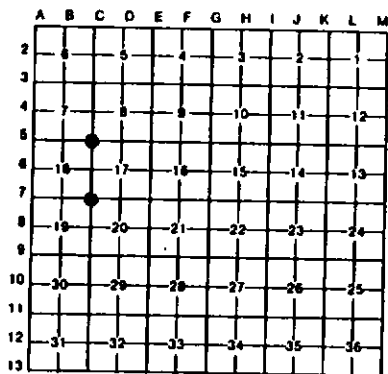
Located In:

Corner Code #

- 1. Public Land Survey
  - T 42N R 28W C7
  - T 42N R 28W C5
  - T R
  - T R
- 2. Property Controlling In Section
  - S T R
  - S T R
- 3. Miscellaneous Property in Sec.
  - S T R
  - S T R

Register of Deeds Stamp & File Number

- 4. Lot No. \_\_\_\_\_, Recorded Plat \_\_\_\_\_
- 5. Private Claims \_\_\_\_\_



I, Stephan J. Szyszkoski, in a field survey on C5 February 02, 1995, do hereby certify that under requirements of P.A. 74, Michigan P.A. of 1970, the corner points mentioned in lines 1 and 2 above were in conformance with regulations and rules therefore as required in the current manual of survey instructions of the United States Department of the Interior, Bureau of Land Management or by a decree of a Court of Law and/or that the corner points mentioned in lines 3, 4 and 5 above were in conformance with the rules of the Michigan Board of Land Surveyors or by a Decree of a Court of Law; established, re-established, monumented, re-monumented, recovered, found as expressed below:

NOTE: Not more than 4 corners, all in the same town and range, may be recorded on this certificate.

A. Description of original monument and accessories and/or subsequent restoration:

(C7) Corner common to Sections 17-18-19-20. Corner previously filed in 1967 by F.J. Bray, RLS as follows: This corner was set by unknown party and was re-witnessed. Blazes on stump and trees in vicinity. Cedar stump to SE has evidence of overgrowth and may be original BT. Bearing and distance are good. Found 1 1/2" iron pipe with 2" iron cap stamped T42N, secs. 17-18-19-20, R28W., new witnesses: 5" B. Ash N30E 16.5 links, 14" Cedar S63E 37.5 links". Found no subsequent record.

(C5) Corner common to Sections 7-8-17-18. Corner previously filed in 1972 by A.O. Enger, RLS as follows: Placed 1" I.D.x36" iron pipe with 4" aluminum cap. Witnessed by Balsam 6 S66W 11.4', W. Birch 6 N12E 21.6', Balsam 6 S47E 23.2'. Found no subsequent record.

B. Description of corner evidence found and/or method applied in restoring or reestablishing corner:

(C7) Found and accepted the monument as described above, projecting about 3 ft., at record bearing and distance from the two 1967 bearing trees: 5" B. ash (dead) N37E 10.9', and 14" Cedar S56E 24.8' in good condition with scribing visible. Left the monument in place and marked two new bearing trees as described below.

(C5) Found and accepted the monument as described above at record bearing and distance from the 1972 NBTs: Balsam 8" S68W 11.4' in good condition, W. Birch 6 NE 21.6', a stump with blaze, notch and scribing visible, Balsam 6 SE 23.2', a cut stump. Left the monument in place and marked three new bearing trees as described below.

C. Description of monument for corner and accessories established to perpetuate locating the position of the corner:

(C7) Found 1 1/2" iron pipe with 2" stamped iron cap.	(C5) Found 1" iron pipe with 4" aluminum MDNR cap.
Blazed and scribed the following new witnesses:	Blazed and scribed the following new bearing trees:
10" B. Ash N40E 38.2' "S17 NBT"	3" Spruce N53E 25.9' "S8 NBT"
2" B. Ash N58W 15.0' "S18 NBT"	5" R. Pine S16E 73.8' "S17 NBT"
Bearings are magnetic.	5" Maple S01W 45.3' "S18 NBT"
	Bearings are magnetic.



Signed by Stephan J. Szyszkoski Date 2-22-95  
 Surveyor's Michigan License No. 33986